

KD-Validated Anti-Mitochondrial Ribosomal Protein S15 Rabbit Monoclonal Antibody
Rabbit monoclonal antibody
Catalog # AGI1584**Specification**

KD-Validated Anti-Mitochondrial Ribosomal Protein S15 Rabbit Monoclonal Antibody - Product Information

Application	WB, FC, ICC
Primary Accession	P82914
Reactivity	Human
Clonality	Monoclonal
Isotype	Rabbit IgG
Calculated MW	Predicted, 30 kDa , observed , 22 kDa kDa
Gene Name	MRPS15
Aliases	Mitochondrial Ribosomal Protein S15; 28S Ribosomal Protein S15, Mitochondrial; Small Ribosomal Subunit Protein US15m; FLJ11564; MRP-S15; RPMS15; US15m; S15mt; Mitochondrial Small Ribosomal Subunit Protein US15m; MPR-S15; DC37
Immunogen	A synthesized peptide derived from human MRPS15

KD-Validated Anti-Mitochondrial Ribosomal Protein S15 Rabbit Monoclonal Antibody - Additional Information

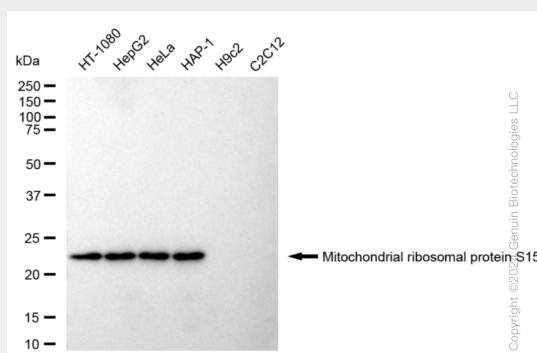
Gene ID	64960
Other Names	
Small ribosomal subunit protein uS15m, 28S ribosomal protein S15, mitochondrial, MRP-S15, S15mt, MRPS15, RPMS15	

KD-Validated Anti-Mitochondrial Ribosomal Protein S15 Rabbit Monoclonal Antibody - Protein Information**Name** MRPS15**Synonyms** RPMS15**Cellular Location**
Mitochondrion matrix**KD-Validated Anti-Mitochondrial Ribosomal Protein S15 Rabbit Monoclonal Antibody - Protocols**

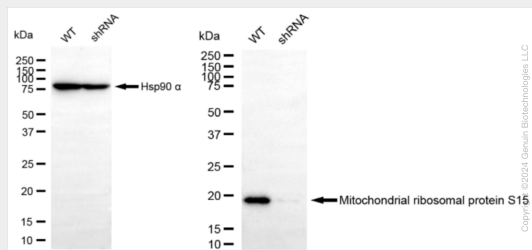
Provided below are standard protocols that you may find useful for product applications.

- [Western Blot](#)
- [Blocking Peptides](#)
- [Dot Blot](#)
- [Immunohistochemistry](#)
- [Immunofluorescence](#)
- [Immunoprecipitation](#)
- [Flow Cytometry](#)
- [Cell Culture](#)

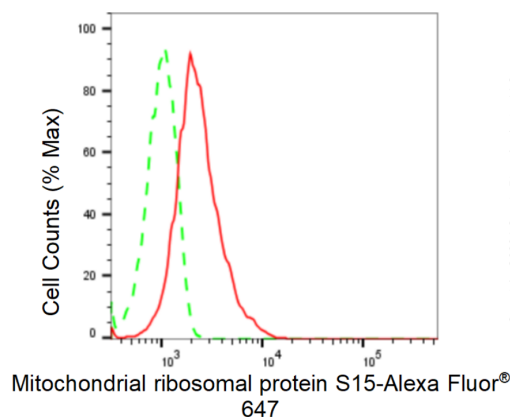
KD-Validated Anti-Mitochondrial Ribosomal Protein S15 Rabbit Monoclonal Antibody - Images



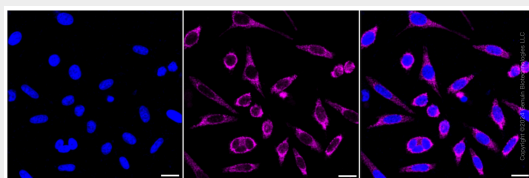
Western blotting analysis using anti-Mitochondrial ribosomal protein S15 antibody (Cat#AGI1584). Total cell lysates (30 µg) from various cell lines were loaded and separated by SDS-PAGE. The blot was incubated with anti-Mitochondrial ribosomal protein S15 antibody (Cat#AGI1584, 1:5,000) and HRP-conjugated goat anti-rabbit secondary antibody respectively.



Western blotting analysis using anti-Mitochondrial ribosomal protein S15 antibody (Cat#AGI1584). Mitochondrial ribosomal protein S15 expression in wild type (WT) and Mitochondrial ribosomal protein S15 shRNA knockdown (KD) HeLa cells with 20 µg of total cell lysates. β-Tubulin serves as a loading control. The blot was incubated with anti-Mitochondrial ribosomal protein S15 antibody (Cat#AGI1584, 1:5,000) and HRP-conjugated goat anti-rabbit secondary antibody respectively.



Flow cytometric analysis of Mitochondrial ribosomal protein S15 expression in HepG2 cells using Mitochondrial ribosomal protein S15 antibody (Cat#AGI1584, 1:2,000). Green, isotype control; red, Mitochondrial ribosomal protein S15.



Immunocytochemical staining of HepG2 cells with anti-Mitochondrial ribosomal protein S15 antibody (Cat#AGI1584, 1:1,000). Nuclei were stained blue with DAPI; Mitochondrial ribosomal protein S15 was stained magenta with Alexa Fluor® 647. Images were taken using Leica stellaris 5. Protein abundance based on laser Intensity and smart gain: Medium. Scale bar: 20 µm.