

KD-Validated Anti-Musashi RNA Binding Protein 2 Rabbit Monoclonal Antibody
Rabbit monoclonal antibody
Catalog # AGI1590**Specification**

KD-Validated Anti-Musashi RNA Binding Protein 2 Rabbit Monoclonal Antibody - Product Information

| | |
|-------------------|--------------------------------------------------------------------------------------------------------------------------------------------------------------------------------------------------------|
| Application | WB, FC, ICC |
| Primary Accession | Q96DH6 |
| Reactivity | Rat, Human, Mouse |
| Clonality | Monoclonal |
| Isotype | Rabbit IgG |
| Calculated MW | Predicted, 35 kDa , observed , 35 kDa KDa |
| Gene Name | MSI2 |
| Aliases | Musashi RNA Binding Protein 2; RNA-Binding Protein Musashi Homolog 2; Musashi-2; Musashi Homolog 2 (Drosophila); Musashi Homolog 2; MSI2H A synthesized peptide derived from human MSI2 |
| Immunogen | |

KD-Validated Anti-Musashi RNA Binding Protein 2 Rabbit Monoclonal Antibody - Additional Information

| | |
|--------------------------------------------------------|--------|
| Gene ID | 124540 |
| Other Names | |
| RNA-binding protein Musashi homolog 2, Musashi-2, MSI2 | |

KD-Validated Anti-Musashi RNA Binding Protein 2 Rabbit Monoclonal Antibody - Protein Information**Name** MSI2**Function**

RNA binding protein that regulates the expression of target mRNAs at the translation level. May play a role in the proliferation and maintenance of stem cells in the central nervous system (By similarity).

Cellular Location

Cytoplasm. Note=Associated with polysomes.

Tissue Location

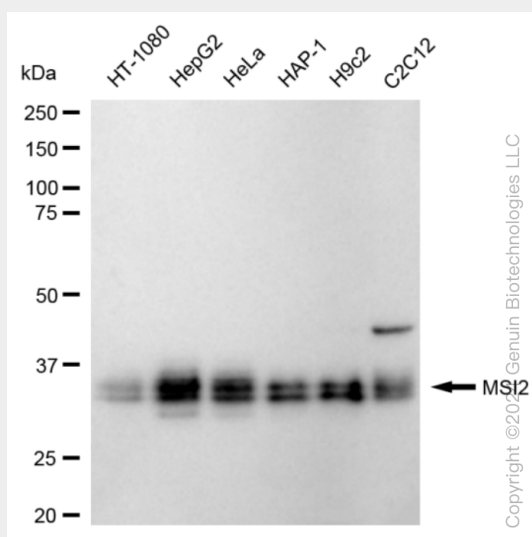
Ubiquitous; detected at low levels.

KD-Validated Anti-Musashi RNA Binding Protein 2 Rabbit Monoclonal Antibody - Protocols

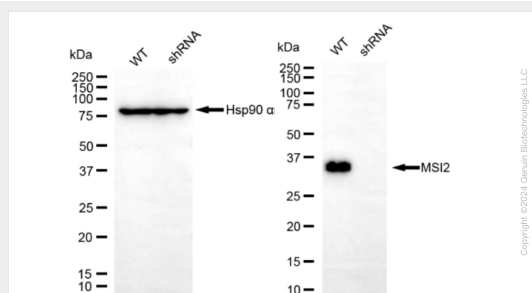
Provided below are standard protocols that you may find useful for product applications.

- [Western Blot](#)
- [Blocking Peptides](#)
- [Dot Blot](#)
- [Immunohistochemistry](#)
- [Immunofluorescence](#)
- [Immunoprecipitation](#)
- [Flow Cytometry](#)
- [Cell Culture](#)

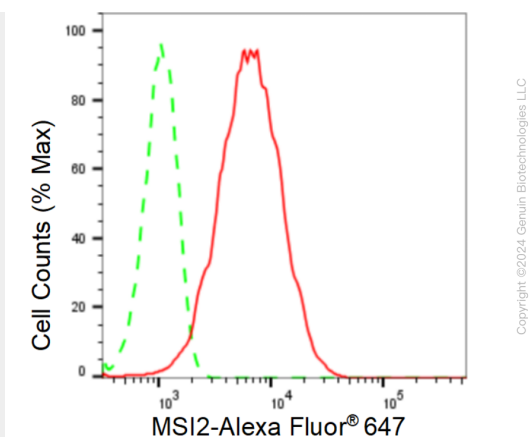
KD-Validated Anti-Musashi RNA Binding Protein 2 Rabbit Monoclonal Antibody - Images



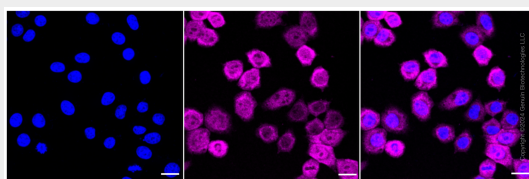
Western blotting analysis using anti-MSI2 antibody (Cat#AGI1590). Total cell lysates (30 µg) from various cell lines were loaded and separated by SDS-PAGE. The blot was incubated with anti-MSI2 antibody (Cat#AGI1590, 1:5,000) and HRP-conjugated goat anti-rabbit secondary antibody respectively.



Western blotting analysis using anti-MSI2 antibody (Cat#AGI1590). MSI2 expression in wild type (WT) and MSI2 shRNA knockdown (KD) HeLa cells with 20 µg of total cell lysates. β-Tubulin serves as a loading control. The blot was incubated with anti-MSI2 antibody (Cat#AGI1590, 1:5,000) and HRP-conjugated goat anti-rabbit secondary antibody respectively.



Flow cytometric analysis of MSI2 expression in HepG2 cells using MSI2 antibody (Cat#AGI1590, 1:2,000). Green, isotype control; red, MSI2.



Immunocytochemical staining of HepG2 cells with anti-MSI2 antibody (Cat#AGI1590, 1:1,000). Nuclei were stained blue with DAPI; MSI2 was stained magenta with Alexa Fluor® 647. Images were taken using Leica stellaris 5. Protein abundance based on laser Intensity and smart gain: High. Scale bar: 20 μ m.