

**KD-Validated Anti-MAP3K2 Rabbit Monoclonal Antibody**  
**Rabbit monoclonal antibody**  
**Catalog # AGI1593****Specification**

---

**KD-Validated Anti-MAP3K2 Rabbit Monoclonal Antibody - Product Information**

Application	WB, FC, ICC
Primary Accession	<a href="#">Q9Y2U5</a>
Reactivity	Rat, Human, Mouse
Clonality	Monoclonal
Isotype	Rabbit IgG
Calculated MW	Predicted, 70 kDa , observed , 70 kDa KDa
Gene Name	MAP3K2
Aliases	Mitogen-Activated Protein Kinase Kinase Kinase 2; MEKK2B; MEKK2; MAPK/ERK Kinase Kinase 2; MAP/ERK Kinase Kinase 2; MEK Kinase 2; MEKK 2; EC 2.7.11.25; MAPKKK2
Immunogen	A synthesized peptide derived from human MEKK2

**KD-Validated Anti-MAP3K2 Rabbit Monoclonal Antibody - Additional Information**

Gene ID	10746
<b>Other Names</b>	
Mitogen-activated protein kinase kinase kinase 2, 2.7.11.25, MAPK/ERK kinase kinase 2, MEK kinase 2, MEKK 2, MAP3K2, MAPKKK2, MEKK2	

**KD-Validated Anti-MAP3K2 Rabbit Monoclonal Antibody - Protein Information****Name** MAP3K2**Synonyms** MAPKKK2, MEKK2**Function**

Component of a protein kinase signal transduction cascade. Regulates the JNK and ERK5 pathways by phosphorylating and activating MAP2K5 and MAP2K7 (By similarity). Plays a role in caveolae kiss-and- run dynamics.

**Cellular Location**

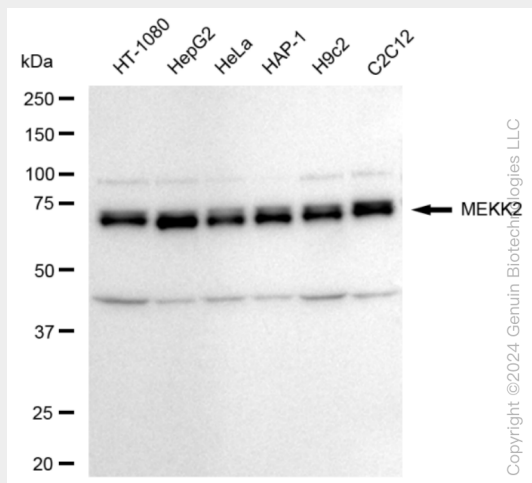
Cytoplasm. Nucleus. Note=Upon EGF stimulation, translocates into the nucleus

**KD-Validated Anti-MAP3K2 Rabbit Monoclonal Antibody - Protocols**

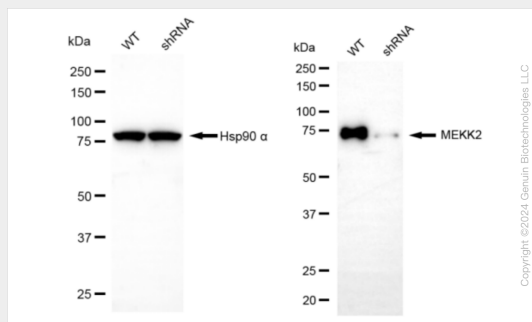
Provided below are standard protocols that you may find useful for product applications.

- [Western Blot](#)
- [Blocking Peptides](#)
- [Dot Blot](#)
- [Immunohistochemistry](#)
- [Immunofluorescence](#)
- [Immunoprecipitation](#)
- [Flow Cytometry](#)
- [Cell Culture](#)

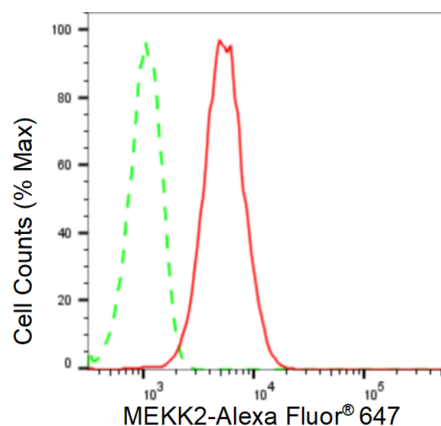
## KD-Validated Anti-MAP3K2 Rabbit Monoclonal Antibody - Images



Western blotting analysis using anti-MEKK2 antibody (Cat#AGI1593). Total cell lysates (30 µg) from various cell lines were loaded and separated by SDS-PAGE. The blot was incubated with anti-MEKK2 antibody (Cat#AGI1593, 1:20,000) and HRP-conjugated goat anti-rabbit secondary antibody respectively.

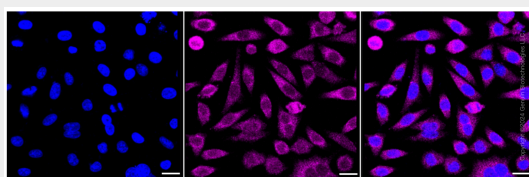


Western blotting analysis using anti-MEKK2 antibody (Cat#AGI1593). MEKK2 expression in wild type (WT) and MEKK2 shRNA knockdown (KD) HT-1080 cells with 20 µg of total cell lysates. Hsp90 α serves as a loading control. The blot was incubated with anti-MEKK2 antibody (Cat#AGI1593, 1:20,000) and HRP-conjugated goat anti-rabbit secondary antibody respectively.



Copyright ©2024 Genuin Biotechnologies LLC

Flow cytometric analysis of MEKK2 expression in HepG2 cells using MEKK2 antibody (Cat#AGI1593, 1:2,000). Green, isotype control; red, MEKK2.



Immunocytochemical staining of HeLa cells with anti-MEKK2 antibody (Cat#AGI1593, 1:1,000). Nuclei were stained blue with DAPI; MEKK2 was stained magenta with Alexa Fluor® 647. Images were taken using Leica stellaris 5. Protein abundance based on laser Intensity and smart gain: Medium. Scale bar: 20 µm.