

KD-Validated Anti-Major Vault Protein Rabbit Monoclonal Antibody
Rabbit monoclonal antibody
Catalog # AGI1607**Specification**

KD-Validated Anti-Major Vault Protein Rabbit Monoclonal Antibody - Product Information

Application	WB, FC, ICC
Primary Accession	Q14764
Reactivity	Rat, Human, Mouse
Clonality	Monoclonal
Isotype	Rabbit IgG
Calculated MW	Predicted, 99 kDa , observed , 110 kDa
Gene Name	KDa
Aliases	MVP
	Major Vault Protein; LRP; Lung
	Resistance-Related Protein; VAULT1;
	Testicular Secretory Protein Li 30
Immunogen	A synthesized peptide derived from human MVP

KD-Validated Anti-Major Vault Protein Rabbit Monoclonal Antibody - Additional Information

Gene ID	9961
Other Names	
Major vault protein, MVP, Lung resistance-related protein, MVP, LRP	

KD-Validated Anti-Major Vault Protein Rabbit Monoclonal Antibody - Protein Information**Name** MVP**Synonyms** LRP**Function**

Required for normal vault structure. Vaults are multi-subunit structures that may act as scaffolds for proteins involved in signal transduction. Vaults may also play a role in nucleo-cytoplasmic transport. Down-regulates IFNG-mediated STAT1 signaling and subsequent activation of JAK. Down-regulates SRC activity and signaling through MAP kinases.

Cellular Location

Cytoplasm. Nucleus, nuclear pore complex. Cytoplasm, perinuclear region. Note=5% found in the nuclear pore complex (PubMed:15133037). Translocates from the nucleus to the cytoplasm upon EGF treatment (PubMed:16441665)

Tissue Location

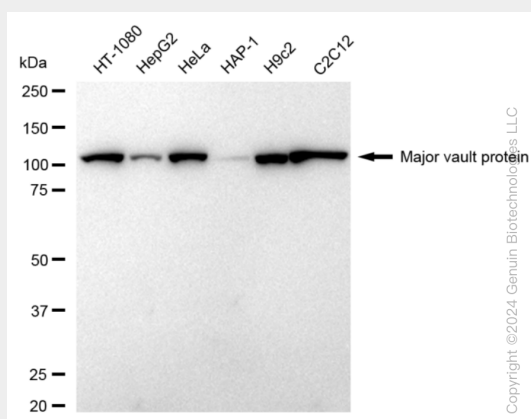
Present in most normal tissues. Higher expression observed in epithelial cells with secretory and excretory functions, as well as in cells chronically exposed to xenobiotics, such as bronchial cells and cells lining the intestine. Overexpressed in many multidrug- resistant cancer cells

KD-Validated Anti-Major Vault Protein Rabbit Monoclonal Antibody - Protocols

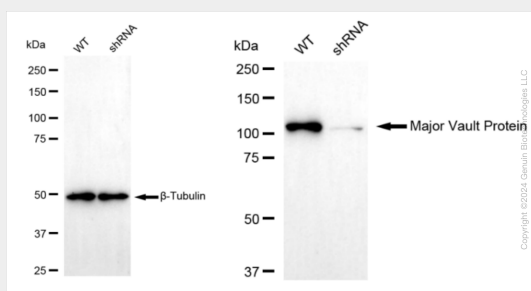
Provided below are standard protocols that you may find useful for product applications.

- [Western Blot](#)
- [Blocking Peptides](#)
- [Dot Blot](#)
- [Immunohistochemistry](#)
- [Immunofluorescence](#)
- [Immunoprecipitation](#)
- [Flow Cytometry](#)
- [Cell Culture](#)

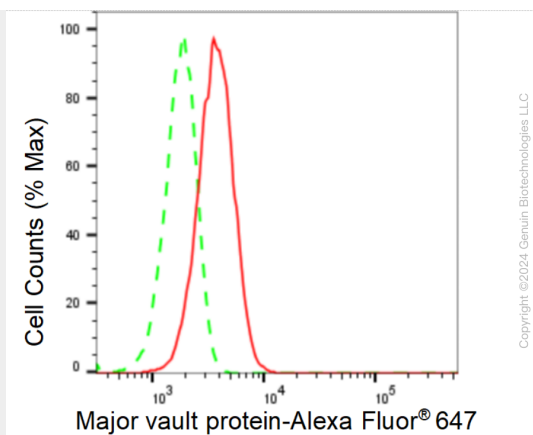
KD-Validated Anti-Major Vault Protein Rabbit Monoclonal Antibody - Images



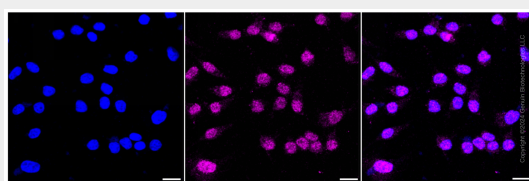
Western blotting analysis using anti-Major vault protein antibody (Cat#62359). Total cell lysates (30 µg) from various cell lines were loaded and separated by SDS-PAGE. The blot was incubated with anti-Major vault protein antibody (Cat#62359, 1:5,000) and HRP-conjugated goat anti-rabbit secondary antibody (Cat#201, 1:20,000) respectively. Image was developed using FeQ™ ECL Substrate Kit (Cat#226).



Western blotting analysis using anti-Major Vault Protein antibody (Cat#62359). Major Vault Protein expression in wild type (WT) and Major Vault Protein shRNA knockdown (KD) HeLa cells with 20 µg of total cell lysates. β-Tubulin serves as a loading control. The blot was incubated with anti-Major Vault Protein antibody (Cat#62359, 1:5,000) and HRP-conjugated goat anti-rabbit secondary antibody (Cat#201, 1:20,000) respectively. Image was developed using NaQ™ ECL Substrate Kit (Cat#716).



Flow cytometric analysis of Major vault protein expression in HeLa cells using Major vault protein antibody (Cat#62359, 1:2,000). Green, isotype control; red, Major vault protein.



Immunocytochemical staining of HeLa cells with anti-Major vault protein antibody (Cat#62359, 1:1,000). Nuclei were stained blue with DAPI; Major vault protein was stained magenta with Alexa Fluor® 647. Images were taken using Leica stellaris 5. Protein abundance based on laser Intensity and smart gain: Medium. Scale bar: 20 µm.