

**KD-Validated Anti-NSDHL Rabbit Monoclonal Antibody**  
**Rabbit monoclonal antibody**  
**Catalog # AGI1610****Specification****KD-Validated Anti-NSDHL Rabbit Monoclonal Antibody - Product Information**

Application	WB, FC, ICC
Primary Accession	<a href="#">Q15738</a>
Reactivity	Rat, Human, Mouse
Clonality	Monoclonal
Isotype	Rabbit IgG
Calculated MW	Predicted, 42 kDa , observed , 38 kDa KDa
Gene Name	NSDHL
Aliases	NAD(P) Dependent Steroid Dehydrogenase-Like; SDR31E1; XAP104; H105e3; Sterol-4-Alpha-Carboxylate 3-Dehydrogenase, Decarboxylating; Short Chain Dehydrogenase/Reductase Family 31E, Member 1; Protein H105e3; EC 1.1.1.170; NAD(P) Dependent Steroid Dehydrogenase-Like Protein Transcript; Epididymis Secretory Sperm Binding Protein; H105E3
Immunogen	A synthesized peptide derived from human NSDHL

**KD-Validated Anti-NSDHL Rabbit Monoclonal Antibody - Additional Information**

Gene ID	50814
<b>Other Names</b>	
Sterol-4-alpha-carboxylate 3-dehydrogenase, decarboxylating, 1.1.1.170, Protein H105e3, NSDHL, H105E3	

**KD-Validated Anti-NSDHL Rabbit Monoclonal Antibody - Protein Information****Name** NSDHL**Synonyms** H105E3**Function**

Catalyzes the NAD(P)(+)-dependent oxidative decarboxylation of the C4 methyl groups of 4-alpha-carboxysterols in post-squalene cholesterol biosynthesis (By similarity). Also plays a role in the regulation of the endocytic trafficking of EGFR (By similarity).

**Cellular Location**

Endoplasmic reticulum membrane; Single-pass membrane protein. Lipid droplet {ECO:0000250|UniProtKB:Q9R1J0} Note=Trafficking through the Golgi is necessary for ER membrane localization. {ECO:0000250|UniProtKB:Q9R1J0}

## Tissue Location

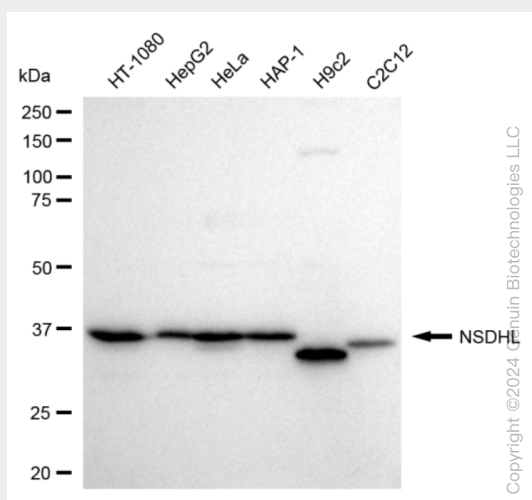
Brain, heart, liver, lung, kidney, skin and placenta

## KD-Validated Anti-NSDHL Rabbit Monoclonal Antibody - Protocols

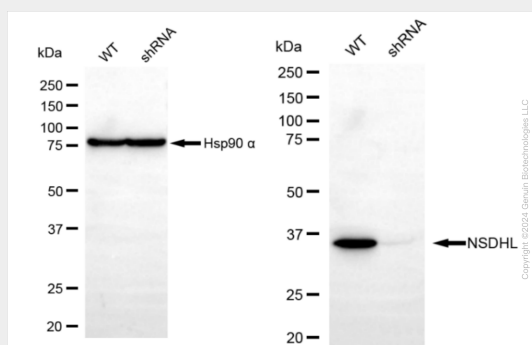
Provided below are standard protocols that you may find useful for product applications.

- [Western Blot](#)
- [Blocking Peptides](#)
- [Dot Blot](#)
- [Immunohistochemistry](#)
- [Immunofluorescence](#)
- [Immunoprecipitation](#)
- [Flow Cytometry](#)
- [Cell Culture](#)

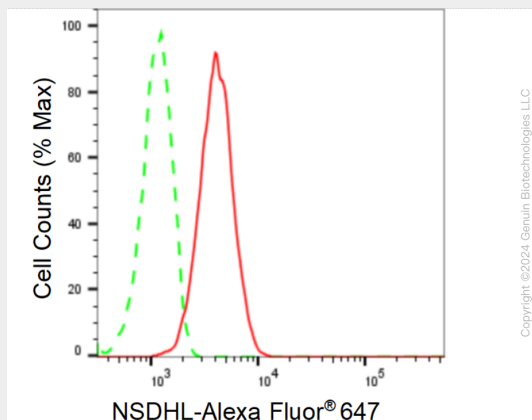
## KD-Validated Anti-NSDHL Rabbit Monoclonal Antibody - Images



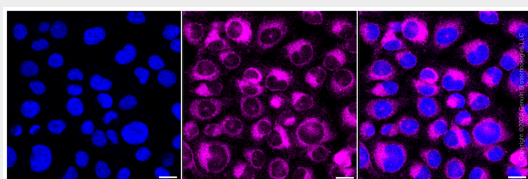
Western blotting analysis using anti-NSDHL antibody (Cat#AGI1610). Total cell lysates (30 µg) from various cell lines were loaded and separated by SDS-PAGE. The blot was incubated with anti-NSDHL antibody (Cat#AGI1610, 1:5,000) and HRP-conjugated goat anti-rabbit secondary antibody respectively.



Western blotting analysis using anti-NSDHL antibody (Cat#AGI1610). NSDHL expression in wild type (WT) and NSDHL shRNA knockdown (KD) HeLa cells with 20 µg of total cell lysates. β-Tubulin serves as a loading control. The blot was incubated with anti-NSDHL antibody (Cat#AGI1610, 1:5,000) and HRP-conjugated goat anti-rabbit secondary antibody respectively.



Flow cytometric analysis of NSDHL expression in HT-1080 cells using anti-NSDHL antibody (Cat#AGI1610, 1:2,000). Green, isotype control; red, NSDHL.



Immunocytochemical staining of HT-1080 cells with anti-NSDHL antibody (Cat#AGI1610, 1:1,000). Nuclei were stained blue with DAPI; NSDHL was stained magenta with Alexa Fluor® 647. Images were taken using Leica stellaris 5. Protein abundance based on laser Intensity and smart gain: Medium. Scale bar: 20 µm.