

KD-Validated Anti-Matrin 3 Rabbit Monoclonal Antibody
Rabbit monoclonal antibody
Catalog # AGI1611**Specification****KD-Validated Anti-Matrin 3 Rabbit Monoclonal Antibody - Product Information**

Application	WB, FC, ICC
Primary Accession	P43243
Reactivity	Rat, Human, Mouse
Clonality	Monoclonal
Isotype	Rabbit IgG
Calculated MW	Predicted, 95 kDa , observed , 125 kDa
Gene Name	KDa
Aliases	MATR3
	Matrin 3; KIAA0723; VCPDM; Matrin-3; MGC9105; MPD2; Vocal Cord And Pharyngeal Weakness With Distal Myopathy; Myopathy, Distal 2; ALS21
Immunogen	A synthesized peptide derived from human Matrin 3

KD-Validated Anti-Matrin 3 Rabbit Monoclonal Antibody - Additional Information

Gene ID	9782
Other Names	
Matrin-3, MATR3, KIAA0723	

KD-Validated Anti-Matrin 3 Rabbit Monoclonal Antibody - Protein Information**Name** MATR3**Synonyms** KIAA0723**Function**

May play a role in transcription or may interact with other nuclear matrix proteins to form the internal fibrogranular network. In association with the SFPQ-NONO heteromer may play a role in nuclear retention of defective RNAs. Plays a role in the regulation of DNA virus-mediated innate immune response by assembling into the HDP-RNP complex, a complex that serves as a platform for IRF3 phosphorylation and subsequent innate immune response activation through the cGAS-STING pathway (PubMed: [28712728](http://www.uniprot.org/citations/28712728)). Binds to N6-methyladenosine (m6A)-containing mRNAs and contributes to MYC stability by binding to m6A-containing MYC mRNAs (PubMed: [32245947](http://www.uniprot.org/citations/32245947)). May bind to specific miRNA hairpins (PubMed: [28431233](http://www.uniprot.org/citations/28431233)).

Cellular Location

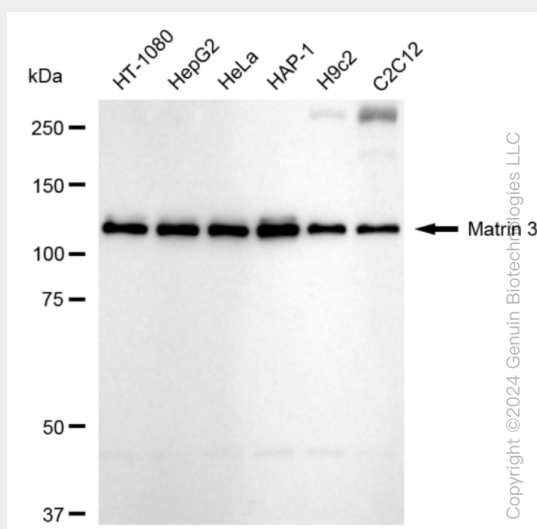
Nucleus matrix.

KD-Validated Anti-Matrin 3 Rabbit Monoclonal Antibody - Protocols

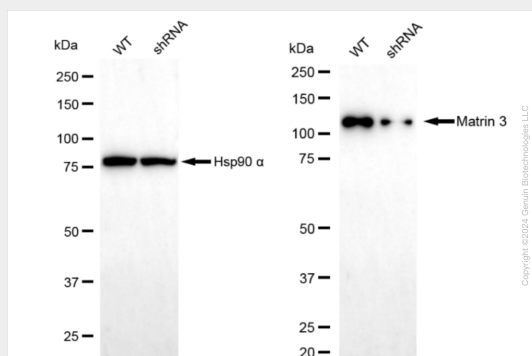
Provided below are standard protocols that you may find useful for product applications.

- [Western Blot](#)
- [Blocking Peptides](#)
- [Dot Blot](#)
- [Immunohistochemistry](#)
- [Immunofluorescence](#)
- [Immunoprecipitation](#)
- [Flow Cytometry](#)
- [Cell Culture](#)

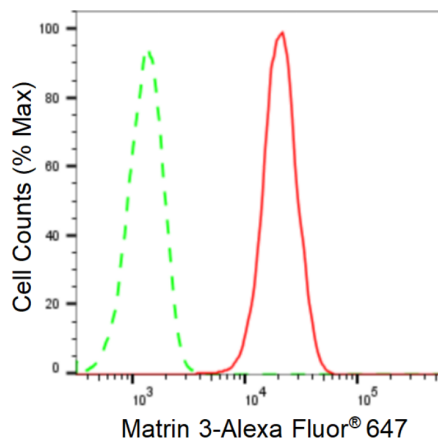
KD-Validated Anti-Matrin 3 Rabbit Monoclonal Antibody - Images



Western blotting analysis using anti-Matrin 3 antibody (Cat#AGI1611). Total cell lysates (30 µg) from various cell lines were loaded and separated by SDS-PAGE. The blot was incubated with anti-Matrin 3 antibody (Cat#AGI1611, 1:5,000) and HRP-conjugated goat anti-rabbit secondary antibody respectively.

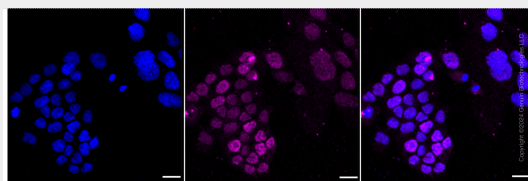


Western blotting analysis using anti-Matrin 3 antibody (Cat#AGI1611). Matrin 3 expression in wild type (WT) and Matrin 3 shRNA knockdown (KD) HeLa cells with 20 µg of total cell lysates. β-Tubulin serves as a loading control. The blot was incubated with anti-Matrin 3 antibody (Cat#AGI1611, 1:5,000) and HRP-conjugated goat anti-rabbit secondary antibody respectively.



Copyright ©2024 Genuin Biotechnologies LLC

Flow cytometric analysis of Matrin 3 expression in HAP-1 cells using anti-Matrin 3 antibody (Cat#AGI1611, 1:2,000). Green, isotype control; red, Matrin 3.



Immunocytochemical staining of HAP-1 cells with anti-Matrin 3 antibody (Cat#AGI1611, 1:1,000). Nuclei were stained blue with DAPI; Matrin 3 was stained magenta with Alexa Fluor® 647. Images were taken using Leica stellaris 5. Protein abundance based on laser Intensity and smart gain: Medium. Scale bar: 20 μ m.