

KD-Validated Anti-Leucine Rich Alpha-2-Glycoprotein 1 Rabbit Monoclonal Antibody
Rabbit monoclonal antibody
Catalog # AGI1612**Specification**

KD-Validated Anti-Leucine Rich Alpha-2-Glycoprotein 1 Rabbit Monoclonal Antibody - Product Information

Application	WB, ICC
Primary Accession	P02750
Reactivity	Human
Clonality	Monoclonal
Isotype	Rabbit IgG
Calculated MW	Predicted, 38 kDa , observed , 50 kDa
Gene Name	KDa
Aliases	LRG1 Leucine Rich Alpha-2-Glycoprotein 1; LRG; Leucine Rich Alpha 2 Glycoprotein; Leucine-Rich Alpha-2-Glycoprotein; 1300008B03Rik; 2310031E04Rik; HMFT1766
Immunogen	A synthesized peptide derived from human LRG1

KD-Validated Anti-Leucine Rich Alpha-2-Glycoprotein 1 Rabbit Monoclonal Antibody - Additional Information

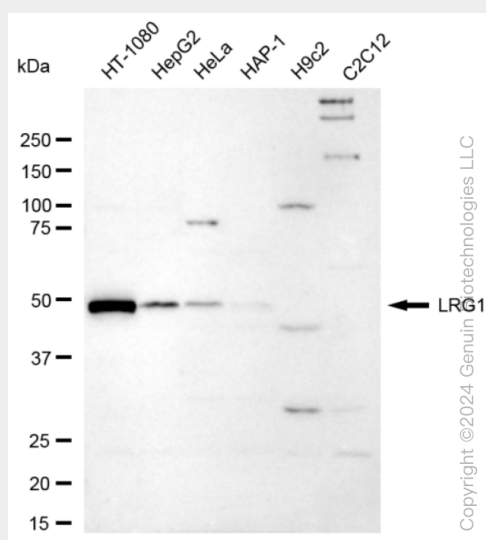
Gene ID	116844
Other Names	
Leucine-rich alpha-2-glycoprotein, LRG, LRG1, LRG	

KD-Validated Anti-Leucine Rich Alpha-2-Glycoprotein 1 Rabbit Monoclonal Antibody - Protein Information**Name** LRG1**Synonyms** LRG**Cellular Location**
Secreted.**Tissue Location**
Plasma.**KD-Validated Anti-Leucine Rich Alpha-2-Glycoprotein 1 Rabbit Monoclonal Antibody - Protocols**

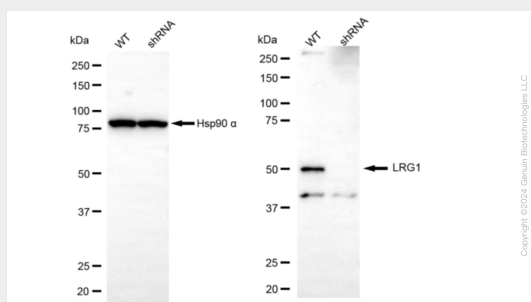
Provided below are standard protocols that you may find useful for product applications.

- [Western Blot](#)
- [Blocking Peptides](#)
- [Dot Blot](#)
- [Immunohistochemistry](#)
- [Immunofluorescence](#)
- [Immunoprecipitation](#)
- [Flow Cytometry](#)
- [Cell Culture](#)

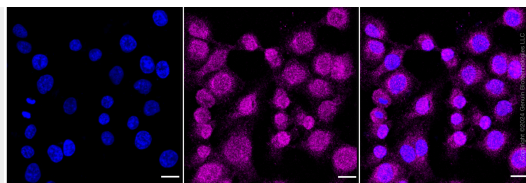
KD-Validated Anti-Leucine Rich Alpha-2-Glycoprotein 1 Rabbit Monoclonal Antibody - Images



Western blotting analysis using anti-LRG1 antibody (Cat#AGI1612). Total cell lysates (30 µg) from various cell lines were loaded and separated by SDS-PAGE. The blot was incubated with anti-LRG1 antibody (Cat#AGI1612, 1:5,000) and HRP-conjugated goat anti-rabbit secondary antibody respectively.



Western blotting analysis using anti-LRG1 antibody (Cat#AGI1612). LRG1 expression in wild type (WT) and LRG1 shRNA knockdown (KD) HeLa cells with 20 µg of total cell lysates. Hsp90 α serves as a loading control. The blot was incubated with anti-LRG1 antibody (Cat#AGI1612, 1:5,000) and HRP-conjugated goat anti-rabbit secondary antibody respectively.



Immunocytochemical staining of HT-1080 cells with anti-LRG1 antibody (Cat#AGI1612, 1:1,000). Nuclei were stained blue with DAPI; LRG1 was stained magenta with Alexa Fluor® 647. Images were taken using Leica stellaris 5. Protein abundance based on laser Intensity and smart gain: Medium. Scale bar: 20 μ m.