

KD-Validated Anti-Olfactomedin 4 Rabbit Monoclonal Antibody
Rabbit monoclonal antibody
Catalog # AGI1619**Specification****KD-Validated Anti-Olfactomedin 4 Rabbit Monoclonal Antibody - Product Information**

Application	WB, FC, ICC
Primary Accession	Q6UX06
Reactivity	Rat, Human, Mouse
Clonality	Monoclonal
Isotype	Rabbit IgG
Calculated MW	Predicted, 57 kDa , observed , 54 kDa KDa
Gene Name	OLFM4
Aliases	Olfactomedin 4; GW112; OlfD; GC1; G-CSF-Stimulated Clone 1 Protein; Antiapoptotic Protein GW112; Olfactomedin-4; HGC-1; HOLfD; OLM4; BA209J19.1; UNQ362
Immunogen	A synthesized peptide derived from human OLFM4

KD-Validated Anti-Olfactomedin 4 Rabbit Monoclonal Antibody - Additional Information

Gene ID	10562
Other Names	
Olfactomedin-4, OLM4, Antiapoptotic protein GW112, G-CSF-stimulated clone 1 protein, hGC-1, hOLfD, OLFM4, GW112	

KD-Validated Anti-Olfactomedin 4 Rabbit Monoclonal Antibody - Protein Information**Name** OLFM4**Synonyms** GW112**Function**

May promote proliferation of pancreatic cancer cells by favoring the transition from the S to G2/M phase. In myeloid leukemic cell lines, inhibits cell growth and induces cell differentiation and apoptosis. May play a role in the inhibition of EIF4EBP1 phosphorylation/deactivation. Facilitates cell adhesion, most probably through interaction with cell surface lectins and cadherin.

Cellular Location

Secreted, extracellular space. Mitochondrion. Note=Subcellular location is not clearly defined: has been shown to be secreted (PubMed:16566923), but also in the mitochondrion (PubMed:15059901, PubMed:20724538), cytoplasm and plasma membrane (PubMed:20724538) and in the nucleus (PubMed:15059901)

Tissue Location

Expressed during myeloid lineage development. Much higher expression in bone marrow

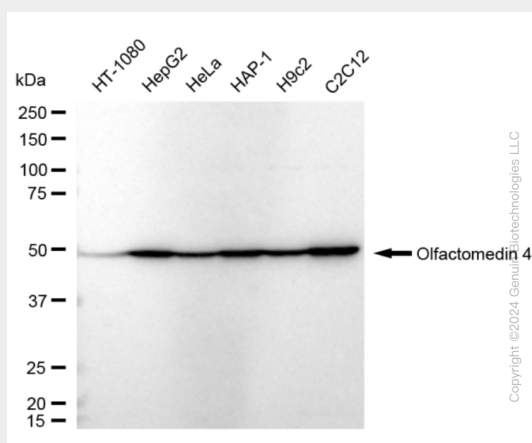
neutrophils than in peripheral blood neutrophils (at protein level). Strongly expressed in the prostate, small intestine and colon and moderately expressed in the bone marrow and stomach. Overexpressed in some pancreatic cancer tissues

KD-Validated Anti-Olfactomedin 4 Rabbit Monoclonal Antibody - Protocols

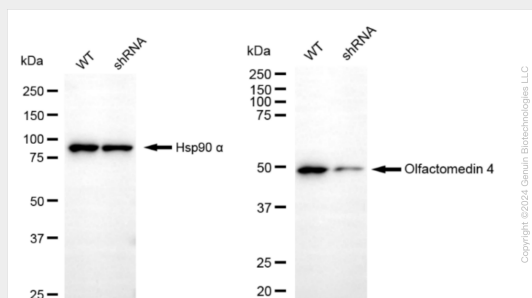
Provided below are standard protocols that you may find useful for product applications.

- [Western Blot](#)
- [Blocking Peptides](#)
- [Dot Blot](#)
- [Immunohistochemistry](#)
- [Immunofluorescence](#)
- [Immunoprecipitation](#)
- [Flow Cytometry](#)
- [Cell Culture](#)

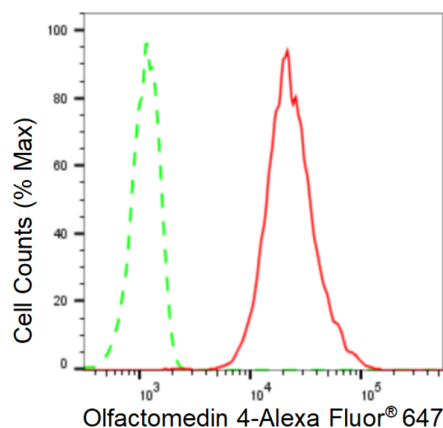
KD-Validated Anti-Olfactomedin 4 Rabbit Monoclonal Antibody - Images



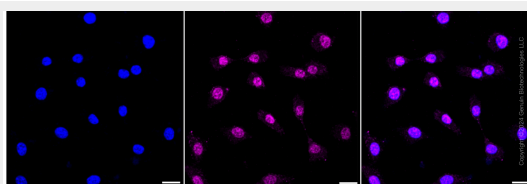
Western blotting analysis using anti-Olfactomedin 4 antibody (Cat#AGI1619). Total cell lysates (30 µg) from various cell lines were loaded and separated by SDS-PAGE. The blot was incubated with anti-Olfactomedin 4 antibody (Cat#AGI1619, 1:5,000) and HRP-conjugated goat anti-rabbit secondary antibody respectively.



Western blotting analysis using anti-Olfactomedin 4 antibody (Cat#AGI1619). Olfactomedin 4 expression in wild type (WT) and Olfactomedin 4 shRNA knockdown (KD) HeLa cells with 20 µg of total cell lysates. Hsp90 α serves as a loading control. The blot was incubated with anti-Olfactomedin 4 antibody (Cat#AGI1619, 1:5,000) and HRP-conjugated goat anti-rabbit secondary antibody respectively.



Flow cytometric analysis of Olfactomedin 4 expression in C2C12 cells using Olfactomedin 4 antibody (Cat#AGI1619, 1:2,000). Green, isotype control; red, Olfactomedin 4.



Immunocytochemical staining of C2C12 cells with anti-Olfactomedin 4 antibody (Cat#AGI1619, 1:1,000). Nuclei were stained blue with DAPI; Olfactomedin 4 was stained magenta with Alexa Fluor® 647. Images were taken using Leica stellaris 5. Protein abundance based on laser Intensity and smart gain: High. Scale bar: 20 µm.