

KD-Validated Anti-Galactosidase beta 1 Rabbit Monoclonal Antibody
Rabbit monoclonal antibody
Catalog # AGI1620**Specification**

KD-Validated Anti-Galactosidase beta 1 Rabbit Monoclonal Antibody - Product Information

Application	WB, FC, ICC
Primary Accession	P16278
Reactivity	Human
Clonality	Monoclonal
Isotype	Rabbit IgG
Calculated MW	Predicted, 76 kDa , observed, 76 kDa KDa
Gene Name	GLB1
Aliases	GLB1; Galactosidase Beta 1; ELNR1; EBP; Elastin Receptor 1, 67kDa; Elastin Binding Protein; Acid; Beta-Galactosidase; Beta-Galactosidase; EC 3.2.1.23; Lactase; Elastin Receptor 1 (67kD); Galactosidase, Beta 1; Elastin Receptor 1; MPS4B
Immunogen	A synthesized peptide derived from human GLB1

KD-Validated Anti-Galactosidase beta 1 Rabbit Monoclonal Antibody - Additional Information

Gene ID	2720
Other Names	
Beta-galactosidase, 3.2.1.23, Acid beta-galactosidase, Lactase, Elastin receptor 1, GLB1, ELNR1	

KD-Validated Anti-Galactosidase beta 1 Rabbit Monoclonal Antibody - Protein Information**Name** GLB1**Synonyms** ELNR1**Function**

[Isoform 1]: Cleaves beta-linked terminal galactosyl residues from gangliosides, glycoproteins, and glycosaminoglycans.

Cellular Location

[Isoform 1]: Lysosome

Tissue Location

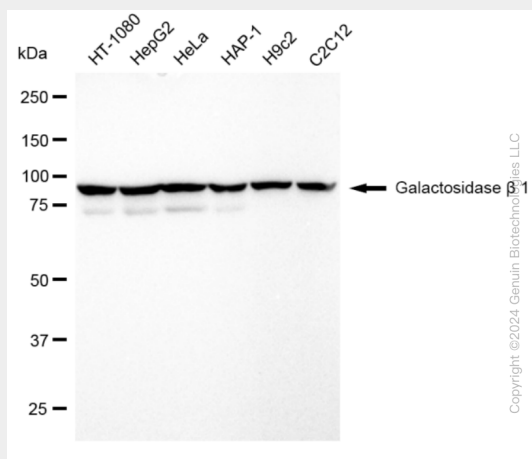
Detected in placenta (at protein level) (PubMed:8383699). Detected in fibroblasts and testis (PubMed:2511208)

KD-Validated Anti-Galactosidase beta 1 Rabbit Monoclonal Antibody - Protocols

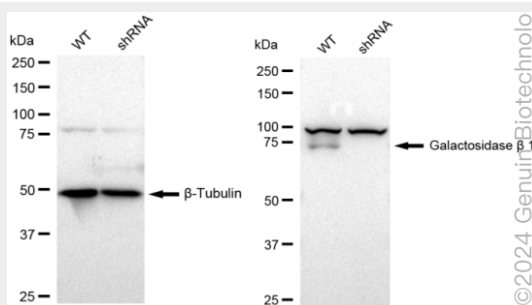
Provided below are standard protocols that you may find useful for product applications.

- [Western Blot](#)
- [Blocking Peptides](#)
- [Dot Blot](#)
- [Immunohistochemistry](#)
- [Immunofluorescence](#)
- [Immunoprecipitation](#)
- [Flow Cytometry](#)
- [Cell Culture](#)

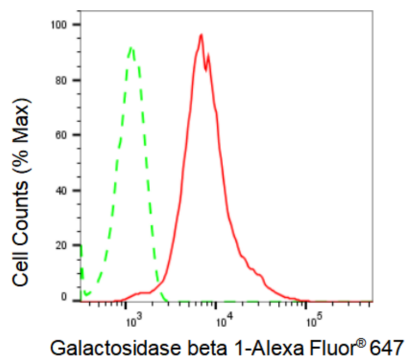
KD-Validated Anti-Galactosidase beta 1 Rabbit Monoclonal Antibody - Images



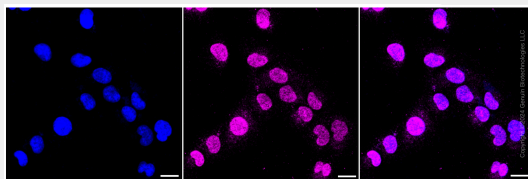
Western blotting analysis using anti-Galactosidase beta 1 antibody (Cat#AGI1620). Total cell lysates (30 µg) from various cell lines were loaded and separated by SDS-PAGE. The blot was incubated with anti-Galactosidase beta 1 antibody (Cat#AGI1620, 1:5,000) and HRP-conjugated goat anti-rabbit secondary antibody respectively.



Western blotting analysis using anti-Galactosidase beta 1 antibody (Cat#AGI1620). Galactosidase beta 1 expression in wild type (WT) and galactosidase beta 1 shRNA knockdown (KD) HeLa cells with 30 µg of total cell lysates. β-Tubulin serves as a loading control. The blot was incubated with anti-Galactosidase beta 1 antibody (Cat#AGI1620, 1:5,000) and HRP-conjugated goat anti-rabbit secondary antibody respectively.



Flow cytometric analysis of Galactosidase beta 1 expression in HepG2 cells using Galactosidase beta 1 antibody (Cat#AGI1620, 1:2,000). Green, isotype control; red, Galactosidase beta 1.



Immunocytochemical staining of HT-1080 cells with Galactosidase beta 1 antibody (Cat#AGI1620, 1:1,000). Nuclei were stained blue with DAPI; Galactosidase beta 1 was stained magenta with Alexa Fluor® 647. Images were taken using Leica stellaris 5. Protein abundance based on laser Intensity and smart gain: Medium. Scale bar: 20 μ m.