

**KD-Validated Anti-RAVER2 Rabbit Monoclonal Antibody**  
**Rabbit monoclonal antibody**  
**Catalog # AGI1627****Specification**

---

**KD-Validated Anti-RAVER2 Rabbit Monoclonal Antibody - Product Information**

Application	WB, FC, ICC
Primary Accession	<a href="#">O9HCJ3</a>
Reactivity	Human
Clonality	Monoclonal
Isotype	Rabbit IgG
Calculated MW	Predicted, 74 kDa , observed , 74 kDa KDa
Gene Name	RAVER2
Aliases	Ribonucleoprotein, PTB Binding 2; KIAA1579; Ribonucleoprotein PTB-Binding 2; Protein Raver-2; FLJ10770; Ribonucleoprotein, PTB-Binding 2
Immunogen	A synthesized peptide derived from human RAVER2

**KD-Validated Anti-RAVER2 Rabbit Monoclonal Antibody - Additional Information**

Gene ID	55225
<b>Other Names</b>	
Ribonucleoprotein PTB-binding 2, Protein raver-2, RAVER2, KIAA1579	

**KD-Validated Anti-RAVER2 Rabbit Monoclonal Antibody - Protein Information****Name** RAVER2**Synonyms** KIAA1579**Function**

May bind single-stranded nucleic acids.

**Cellular Location**

Nucleus. Cytoplasm. Note=May shuttle between the nucleus and the cytoplasm.

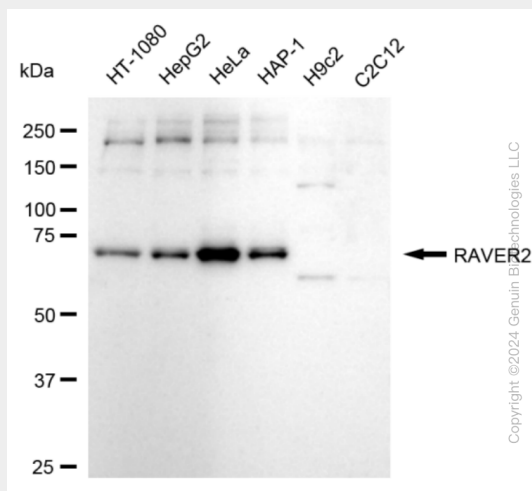
**KD-Validated Anti-RAVER2 Rabbit Monoclonal Antibody - Protocols**

Provided below are standard protocols that you may find useful for product applications.

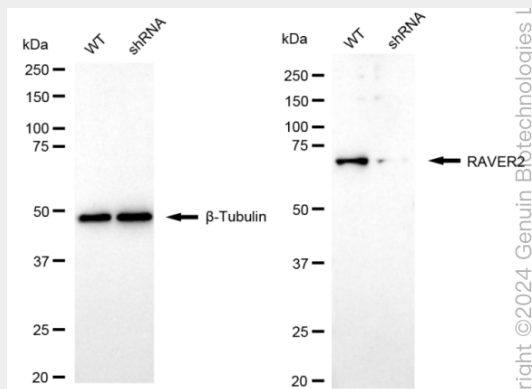
- [Western Blot](#)
- [Blocking Peptides](#)
- [Dot Blot](#)
- [Immunohistochemistry](#)

- [Immunofluorescence](#)
- [Immunoprecipitation](#)
- [Flow Cytometry](#)
- [Cell Culture](#)

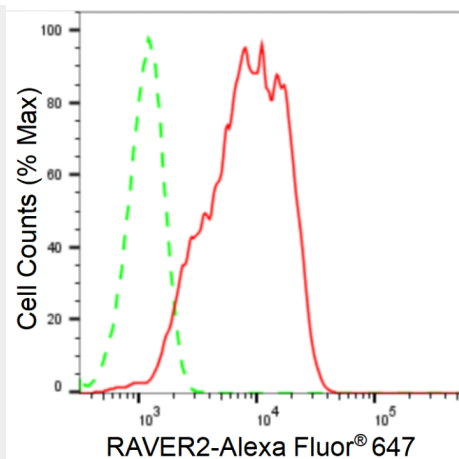
## KD-Validated Anti-RAVER2 Rabbit Monoclonal Antibody - Images



Western blotting analysis using anti-RAVER2 antibody (Cat#AGI1627). Total cell lysates (30 µg) from various cell lines were loaded and separated by SDS-PAGE. The blot was incubated with anti-RAVER2 antibody (Cat#AGI1627, 1:5,000) and HRP-conjugated goat anti-rabbit secondary antibody respectively.

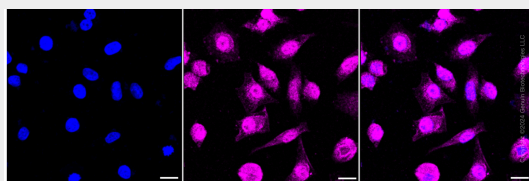


Western blotting analysis using anti-RAVER2 antibody (Cat#AGI1627). RAVER2 expression in wild type (WT) and RAVER2 shRNA knockdown (KD) HeLa cells with 20 µg of total cell lysates. β-Tubulin serves as a loading control. The blot was incubated with anti-RAVER2 antibody (Cat#AGI1627, 1:5,000) and HRP-conjugated goat anti-rabbit secondary antibody respectively.



Copyright ©2024 Genuin Biotechnologies LLC

Flow cytometric analysis of RAVER2 expression in HeLa cells using RAVER2 antibody (Cat#AGI1627, 1:2,000). Green, isotype control; red, RAVER2.



Immunocytochemical staining of HeLa cells with anti-RAVER2 antibody (Cat#AGI1627, 1:1,000). Nuclei were stained blue with DAPI; RAVER2 was stained magenta with Alexa Fluor® 647. Images were taken using Leica stellaris 5. Protein abundance based on laser Intensity and smart gain: Medium. Scale bar: 20  $\mu$ m.