

KD-Validated Anti-Rab4 Rabbit Monoclonal Antibody
Rabbit monoclonal antibody
Catalog # AGI1628**Specification****KD-Validated Anti-Rab4 Rabbit Monoclonal Antibody - Product Information**

Application	WB, ICC
Primary Accession	P20338
Reactivity	Rat, Human, Mouse
Clonality	Monoclonal
Isotype	Rabbit IgG
Calculated MW	Predicted, 24 kDa , observed , 24 kDa KDa
Gene Name	RAB4A
Aliases	RAB4A, Member RAS Oncogene Family; HRES-1/RAB4; RAB4; Ras-Related Protein Rab-4A; HTLV-1 Related Endogenous Sequence; EC 3.6.5.2; HRES-1; HRES1
Immunogen	A synthesized peptide derived from human Rab4

KD-Validated Anti-Rab4 Rabbit Monoclonal Antibody - Additional Information

Gene ID	5867
Other Names	
Ras-related protein Rab-4A, 3.6.5.2, RAB4A (HGNC:9781), RAB4	

KD-Validated Anti-Rab4 Rabbit Monoclonal Antibody - Protein Information**Name** RAB4A ([HGNC:9781](#))**Synonyms** RAB4**Function**

The small GTPases Rab are key regulators of intracellular membrane trafficking, from the formation of transport vesicles to their fusion with membranes. Rabs cycle between an inactive GDP-bound form and an active GTP-bound form that is able to recruit to membranes different sets of downstream effectors directly responsible for vesicle formation, movement, tethering and fusion (PubMed:15907487, PubMed:16034420). RAB4A is involved in protein transport (PubMed:29425100). Also plays a role in vesicular traffic. Mediates VEGFR2 endosomal trafficking to enhance VEGFR2 signaling (PubMed:29425100). Acts as a regulator of platelet alpha-granule release during activation and aggregation of platelets (By similarity).

Cellular Location

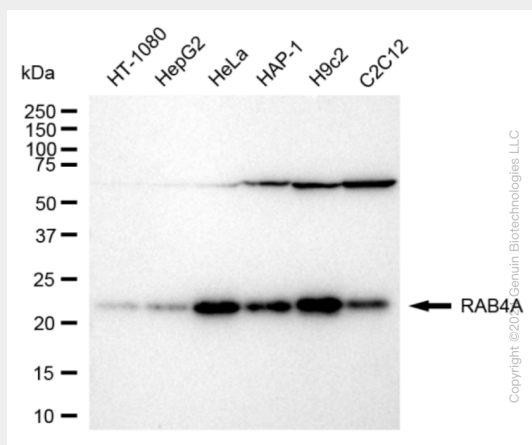
Membrane; Peripheral membrane protein. Cytoplasm Early endosome membrane {ECO:0000250|UniProtKB:P05714}; Peripheral membrane protein {ECO:0000250|UniProtKB:P05714}. Recycling endosome membrane {ECO:0000250|UniProtKB:P05714}; Peripheral membrane protein {ECO:0000250|UniProtKB:P05714}. Note=Generally associated with membranes. Cytoplasmic when phosphorylated by CDK1

KD-Validated Anti-Rab4 Rabbit Monoclonal Antibody - Protocols

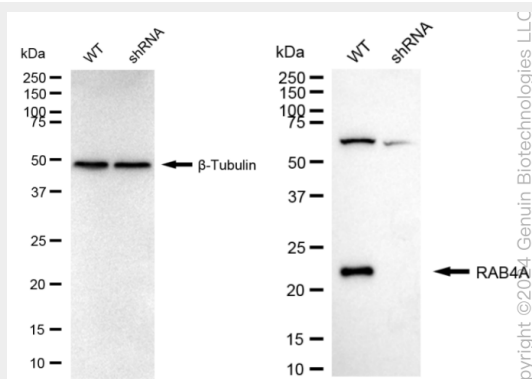
Provided below are standard protocols that you may find useful for product applications.

- [Western Blot](#)
- [Blocking Peptides](#)
- [Dot Blot](#)
- [Immunohistochemistry](#)
- [Immunofluorescence](#)
- [Immunoprecipitation](#)
- [Flow Cytometry](#)
- [Cell Culture](#)

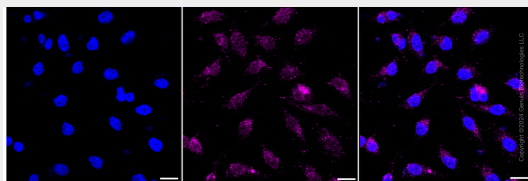
KD-Validated Anti-Rab4 Rabbit Monoclonal Antibody - Images



Western blotting analysis using anti-RAB4A antibody (Cat#AGI1628). Total cell lysates (30 µg) from various cell lines were loaded and separated by SDS-PAGE. The blot was incubated with anti-RAB4A antibody (Cat#AGI1628, 1:5,000) and HRP-conjugated goat anti-rabbit secondary antibody respectively.



Western blotting analysis using anti-RAB4A antibody (Cat#AGI1628). RAB4A expression in wild type (WT) and RAB4A shRNA knockdown (KD) HeLa cells with 20 μ g of total cell lysates. β -Tubulin serves as a loading control. The blot was incubated with anti-RAB4A antibody (Cat#AGI1628, 1:5,000) and HRP-conjugated goat anti-rabbit secondary antibody respectively.



Immunocytochemical staining of HeLa cells with anti-RAB4A antibody (Cat#AGI1628, 1:1,000). Nuclei were stained blue with DAPI; RAB4A was stained magenta with Alexa Fluor® 647. Images were taken using Leica stellaris 5. Protein abundance based on laser Intensity and smart gain: Medium. Scale bar: 20 μ m.