

KD-Validated Anti-PSIP1 / LEDGF Rabbit Monoclonal Antibody
Rabbit monoclonal antibody
Catalog # AGI1629**Specification****KD-Validated Anti-PSIP1 / LEDGF Rabbit Monoclonal Antibody - Product Information**

Application	WB, FC, ICC
Primary Accession	O75475
Reactivity	Rat, Human, Mouse
Clonality	Monoclonal
Isotype	Rabbit IgG
Calculated MW	Predicted, 60 kDa ; Observed , 75 kDa KDa
Gene Name	PSIP1
Aliases	PC4 And SRSF1 Interacting Protein 1; LEDGF; DFS70; Lens Epithelium-Derived Growth Factor; PSIP2; P52; P75; PC4 And SFRS1 Interacting Protein 1; Dense Fine Speckles 70 KDa Protein; PC4 And SFRS1-Interacting Protein; CLL-Associated Antigen KW-7; PC4 And SFRS1 Interacting Protein 2; Transcriptional Coactivator P52/P75; Transcriptional Coactivator P75/P52; DFS 70; PAIP
Immunogen	A synthesized peptide derived from human PSIP1 / LEDGF

KD-Validated Anti-PSIP1 / LEDGF Rabbit Monoclonal Antibody - Additional Information

Gene ID	11168
Other Names	PC4 and SFRS1-interacting protein, CLL-associated antigen KW-7, Dense fine speckles 70 kDa protein, DFS 70, Lens epithelium-derived growth factor, Transcriptional coactivator p75/p52, PSIP1, DFS70, LEDGF, PSIP2

KD-Validated Anti-PSIP1 / LEDGF Rabbit Monoclonal Antibody - Protein Information**Name** PSIP1**Synonyms** DFS70, LEDGF, PSIP2**Function**

Transcriptional coactivator involved in neuroepithelial stem cell differentiation and neurogenesis. Involved in particular in lens epithelial cell gene regulation and stress responses. May play an important role in lens epithelial to fiber cell terminal differentiation. May play a protective role during stress-induced apoptosis. Isoform 2 is a more general and stronger transcriptional coactivator. Isoform 2 may also act as an adapter to coordinate pre- mRNA splicing. Cellular cofactor for lentiviral integration.

Cellular Location

Nucleus. Note=Remains chromatin-associated throughout the cell cycle

Tissue Location

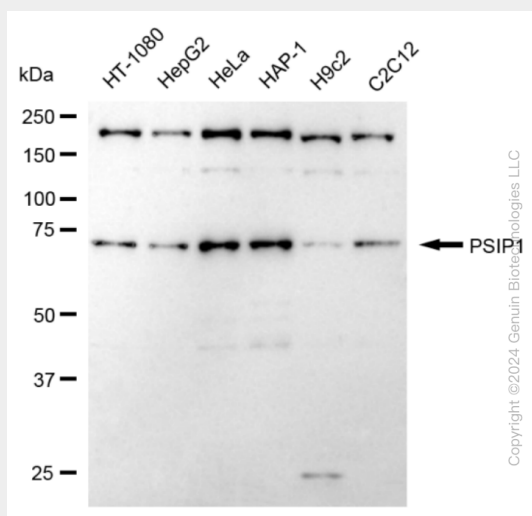
Widely expressed. Expressed at high level in the thymus. Expressed in fetal and adult brain. Expressed in neurons, but not astrocytes. Markedly elevated in fetal as compared to adult brain. In the adult brain, expressed in the subventricular zone (SVZ), in hippocampus, and undetectable elsewhere. In the fetal brain, expressed in the germinal neuroepithelium and cortical plate regions

KD-Validated Anti-PSIP1 / LEDGF Rabbit Monoclonal Antibody - Protocols

Provided below are standard protocols that you may find useful for product applications.

- [Western Blot](#)
- [Blocking Peptides](#)
- [Dot Blot](#)
- [Immunohistochemistry](#)
- [Immunofluorescence](#)
- [Immunoprecipitation](#)
- [Flow Cytometry](#)
- [Cell Culture](#)

KD-Validated Anti-PSIP1 / LEDGF Rabbit Monoclonal Antibody - Images



Western blotting analysis using anti-PSIP1 antibody (Cat#AGI1629). Total cell lysates (30 µg) from various cell lines were loaded and separated by SDS-PAGE. The blot was incubated with anti-PSIP1 antibody (Cat#AGI1629, 1:5,000) and HRP-conjugated goat anti-rabbit secondary antibody respectively.

