

**KD-Validated Anti-PBP Rabbit Monoclonal Antibody**  
**Rabbit monoclonal antibody**  
**Catalog # AGI1631****Specification****KD-Validated Anti-PBP Rabbit Monoclonal Antibody - Product Information**

Application	WB, FC, ICC
Primary Accession	<a href="#">P30086</a>
Reactivity	Rat, Human, Mouse
Clonality	Monoclonal
Isotype	Rabbit IgG
Calculated MW	Predicted, 21 kDa , observed , 21 kDa KDa
Gene Name	PEBP1
Aliases	Phosphatidylethanolamine Binding Protein 1; RKIP; PEBP; HCNP; PBP; Hippocampal Cholinergic Neurostimulating Peptide; Phosphatidylethanolamine-Binding Protein 1; Raf Kinase Inhibitory Protein; Raf Kinase Inhibitor Protein; Prostatic Binding Protein; Neuropolypeptide H3; HCNPpp; PEBP-1; Epididymis Secretory Protein Li 34; Epididymis Secretory Protein Li 96; Epididymis Luminal Protein 210; Prostatic-Binding Protein; HEL-S-34; HEL-S-96; HEL-210
Immunogen	A synthesized peptide derived from human PEBP1

**KD-Validated Anti-PBP Rabbit Monoclonal Antibody - Additional Information**

Gene ID	5037
<b>Other Names</b>	Phosphatidylethanolamine-binding protein 1, PEBP-1, HCNPpp, Neuropolypeptide h3, Prostatic-binding protein, Raf kinase inhibitor protein, RKIP, Hippocampal cholinergic neurostimulating peptide, HCNP, PEBP1, PBP, PEBP

**KD-Validated Anti-PBP Rabbit Monoclonal Antibody - Protein Information****Name** PEBP1**Synonyms** PBP, PEBP**Function**

Binds ATP, opioids and phosphatidylethanolamine. Has lower affinity for phosphatidylinositol and phosphatidylcholine. Serine protease inhibitor which inhibits thrombin, neuropsin and chymotrypsin but not trypsin, tissue type plasminogen activator and elastase (By similarity). Inhibits the kinase activity of RAF1 by inhibiting its activation and by dissociating the RAF1/MEK complex and acting as a competitive inhibitor of MEK phosphorylation.

## Cellular Location

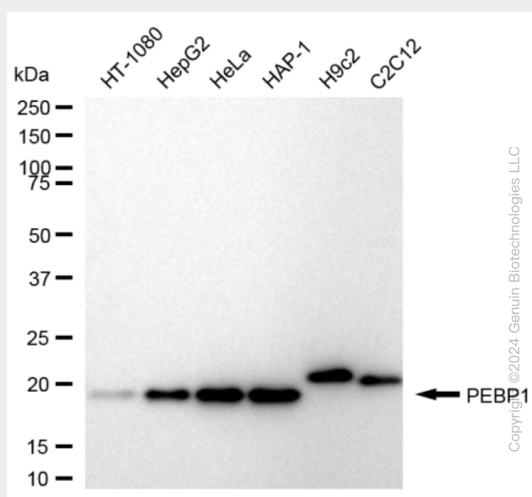
Cytoplasm.

## KD-Validated Anti-PBP Rabbit Monoclonal Antibody - Protocols

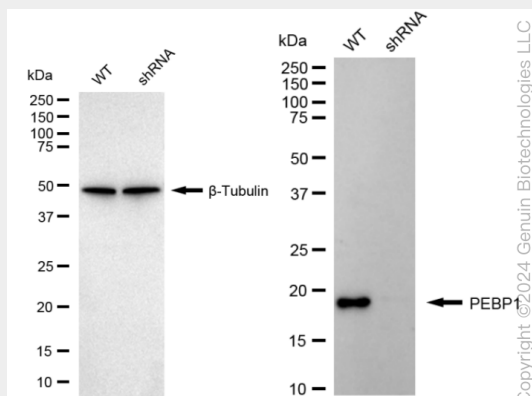
Provided below are standard protocols that you may find useful for product applications.

- [Western Blot](#)
- [Blocking Peptides](#)
- [Dot Blot](#)
- [Immunohistochemistry](#)
- [Immunofluorescence](#)
- [Immunoprecipitation](#)
- [Flow Cytometry](#)
- [Cell Culture](#)

## KD-Validated Anti-PBP Rabbit Monoclonal Antibody - Images

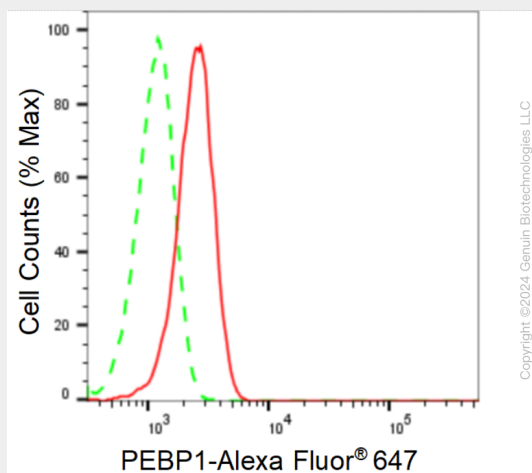


Western blotting analysis using anti-PEBP1 antibody (Cat#AGI1631). Total cell lysates (30 µg) from various cell lines were loaded and separated by SDS-PAGE. The blot was incubated with anti-PEBP1 antibody (Cat#AGI1631, 1:5,000) and HRP-conjugated goat anti rabbit secondary antibody respectively.

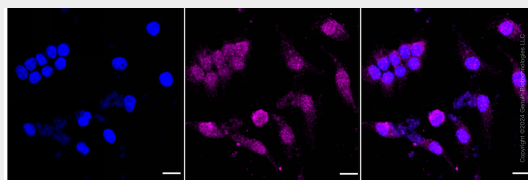


Western blotting analysis using anti-PEBP1 antibody (Cat#AGI1631). PEBP1 expression in wild type (WT) and PEBP1 shRNA knockdown (KD) HeLa cells with 20 µg of total cell lysates. β-Tubulin

serves as a loading control. The blot was incubated with anti-PEBP1 antibody (Cat#AGI1631, 1:5,000) and HRP-conjugated goat anti-rabbit secondary antibody respectively.



Flow cytometric analysis of PEBP1 expression in HeLa cells using PEBP1 antibody (Cat#AGI1631, 1:2,000). Green, isotype control; red, PEBP1.



Immunocytochemical staining of HeLa cells with anti-PEBP1 antibody (Cat#AGI1631, 1:1,000). Nuclei were stained blue with DAPI; PEBP1 was stained magenta with Alexa Fluor® 647. Images were taken using Leica stellaris 5. Protein abundance based on laser Intensity and smart gain: Low. Scale bar: 20 µm.