

KD-Validated Anti-Phospho-Paxillin (Y118) Rabbit Monoclonal Antibody
Rabbit monoclonal antibody
Catalog # AGI1634**Specification**

KD-Validated Anti-Phospho-Paxillin (Y118) Rabbit Monoclonal Antibody - Product Information

Application	WB, ICC
Primary Accession	P49023
Reactivity	Rat, Human, Mouse
Clonality	Monoclonal
Isotype	Rabbit IgG
Calculated MW	Predicted, 65 kDa , observed , 68 kDa KDa
Gene Name	PXN
Aliases	Paxillin; Testicular Tissue Protein Li 134
Immunogen	A synthesized peptide derived from human Phospho-Paxillin (Y118)

KD-Validated Anti-Phospho-Paxillin (Y118) Rabbit Monoclonal Antibody - Additional Information

Gene ID	5829
Other Names	
Paxillin, PXN	

KD-Validated Anti-Phospho-Paxillin (Y118) Rabbit Monoclonal Antibody - Protein Information

Name PXN ([HGNC:9718](#))

Function

Cytoskeletal protein involved in actin-membrane attachment at sites of cell adhesion to the extracellular matrix (focal adhesion). Recruits other proteins such as TRIM15 to focal adhesion.

Cellular Location

Cytoplasm, cytoskeleton. Cell junction, focal adhesion. Cytoplasm, cell cortex {ECO:0000250|UniProtKB:Q8VI36}. Note=Colocalizes with integrins at the cell periphery. Colocalize with PXN to membrane ruffles and the leading edge of migrating cells (PubMed:23128389). {ECO:0000250, ECO:0000269|PubMed:23128389}

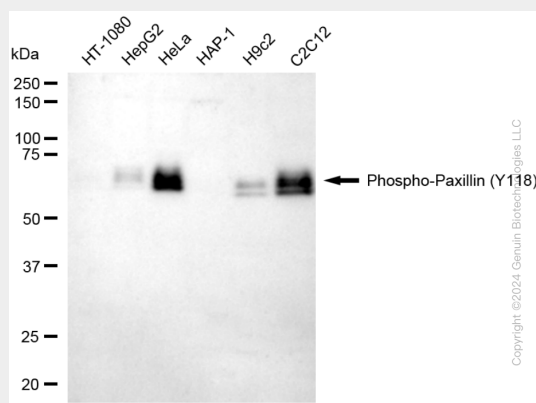
KD-Validated Anti-Phospho-Paxillin (Y118) Rabbit Monoclonal Antibody - Protocols

Provided below are standard protocols that you may find useful for product applications.

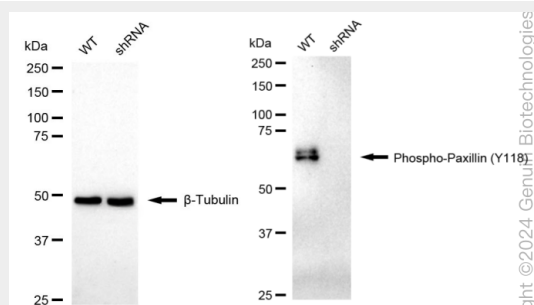
- [Western Blot](#)
- [Blocking Peptides](#)

- [Dot Blot](#)
- [Immunohistochemistry](#)
- [Immunofluorescence](#)
- [Immunoprecipitation](#)
- [Flow Cytometry](#)
- [Cell Culture](#)

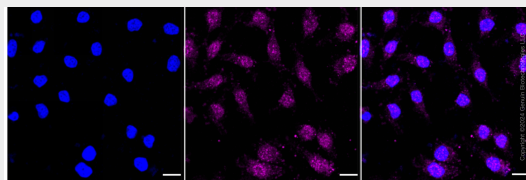
KD-Validated Anti-Phospho-Paxillin (Y118) Rabbit Monoclonal Antibody - Images



Western blotting analysis using anti-Phospho-Paxillin (Y118) antibody (Cat#AGI1634). Total cell lysates (30 µg) from various cell lines were loaded and separated by SDS-PAGE. The blot was incubated with anti-Phospho-Paxillin (Y118) antibody (Cat#AGI1634, 1:5,000) and HRP-conjugated goat anti-rabbit secondary antibody respectively.



Western blotting analysis using anti-Phospho-Paxillin (Y118) antibody (Cat#AGI1634). Phospho-Paxillin (Y118) expression in wild type (WT) and Phospho-Paxillin (Y118) shRNA knockdown (KD) HeLa cells with 20 µg of total cell lysates. β-Tubulin serves as a loading control. The blot was incubated with anti-Phospho-Paxillin (Y118) antibody (Cat#AGI1634, 1:5,000) and HRP-conjugated goat anti-rabbit secondary antibody respectively.



Immunocytochemical staining of HeLa cells with anti-Phospho-Paxillin (Y118) antibody (Cat#AGI1634, 1:1,000). Nuclei were stained blue with DAPI; Phospho-Paxillin (Y118) was stained magenta with Alexa Fluor® 647. Images were taken using Leica stellaris 5. Protein abundance based on laser Intensity and smart gain: Low. Scale bar: 20 µm.