

KD-Validated Anti-Pre-mRNA Processing Factor 4 Rabbit Monoclonal Antibody
Rabbit monoclonal antibody
Catalog # AGI1639**Specification**

KD-Validated Anti-Pre-mRNA Processing Factor 4 Rabbit Monoclonal Antibody - Product Information

Application	WB, FC, ICC
Primary Accession	O43172
Reactivity	Rat, Human, Mouse
Clonality	Monoclonal
Isotype	Rabbit IgG
Calculated MW	Predicted, 58 kDa , observed , 58 kDa KDa
Gene Name	PRPF4
Aliases	Pre-mRNA Processing Factor 4; PRP4; U4/U6 Small Nuclear Ribonucleoprotein Prp4; SNRNP60; HPRP4P; Prp4p; HPRP4; PRP4/STK/WD Splicing Factor; U4/U6 SnRNP 60 KDa Protein; WD Splicing Factor Prp4; PRP4 Homolog; PRP4 Pre-mRNA Processing Factor 4 Homolog (Yeast); PRP4 Pre-mRNA Processing Factor 4 Homolog; HPrp4; RP70
Immunogen	A synthesized peptide derived from human PRPF4

KD-Validated Anti-Pre-mRNA Processing Factor 4 Rabbit Monoclonal Antibody - Additional InformationGene ID **9128****Other Names**

U4/U6 small nuclear ribonucleoprotein Prp4, PRP4 homolog, hPrp4, U4/U6 snRNP 60 kDa protein, WD splicing factor Prp4, PRPF4, PRP4

KD-Validated Anti-Pre-mRNA Processing Factor 4 Rabbit Monoclonal Antibody - Protein Information**Name** PRPF4**Synonyms** PRP4**Function**

Plays a role in pre-mRNA splicing as component of the U4/U6- U5 tri-snRNP complex that is involved in spliceosome assembly, and as component of the precatalytic spliceosome (spliceosome B complex).

Cellular Location

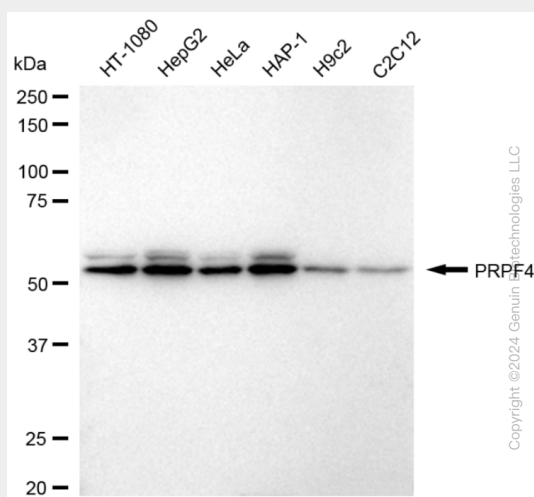
Nucleus. Nucleus speckle

KD-Validated Anti-Pre-mRNA Processing Factor 4 Rabbit Monoclonal Antibody - Protocols

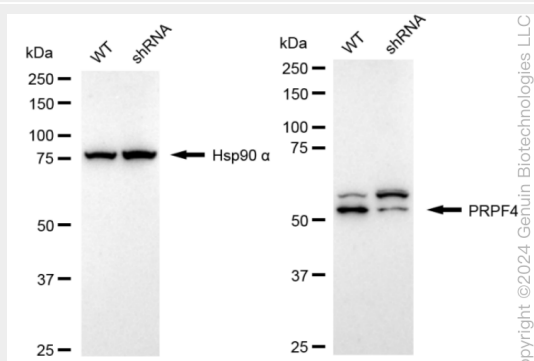
Provided below are standard protocols that you may find useful for product applications.

- [Western Blot](#)
- [Blocking Peptides](#)
- [Dot Blot](#)
- [Immunohistochemistry](#)
- [Immunofluorescence](#)
- [Immunoprecipitation](#)
- [Flow Cytometry](#)
- [Cell Culture](#)

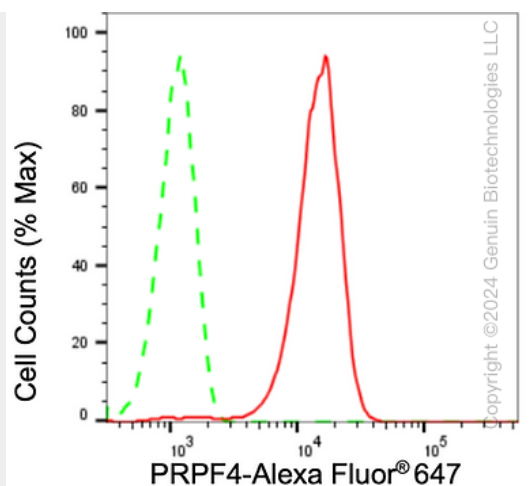
KD-Validated Anti-Pre-mRNA Processing Factor 4 Rabbit Monoclonal Antibody - Images



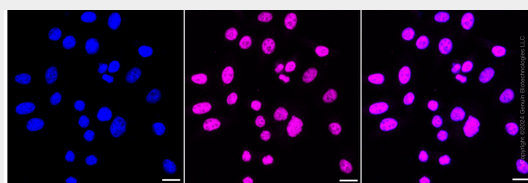
Western blotting analysis using anti-PRPF4 antibody (Cat#AGI1639). Total cell lysates (30 µg) from various cell lines were loaded and separated by SDS-PAGE. The blot was incubated with anti-PRPF4 antibody (Cat#AGI1639, 1:5,000) and HRP-conjugated goat anti-rabbit secondary antibody respectively.



Western blotting analysis using anti-PRPF4 antibody (Cat#AGI1639). PRPF4 expression in wild type (WT) and PRPF4 shRNA knockdown (KD) HeLa cells with 20 µg of total cell lysates. Hsp90 α serves as a loading control. The blot was incubated with anti-PRPF4 antibody (Cat#AGI1639, 1:5,000) and HRP-conjugated goat anti-rabbit secondary antibody respectively.



Flow cytometric analysis of PRPF4 expression in HepG2 cells using anti-PRPF4 antibody (Cat#AGI1639, 1:2,000). Green, isotype control; red, PRPF4.



Immunocytochemical staining of HepG2 cells with anti-PRPF4 antibody (Cat#AGI1639, 1:1,000). Nuclei were stained blue with DAPI; PRPF4 was stained magenta with Alexa Fluor® 647. Images were taken using Leica stellaris 5. Protein abundance based on laser Intensity and smart gain: High. Scale bar: 20 μ m.