

KD-Validated Anti-Paraoxonase 2 Rabbit Monoclonal Antibody
Rabbit monoclonal antibody
Catalog # AGI1646**Specification****KD-Validated Anti-Paraoxonase 2 Rabbit Monoclonal Antibody - Product Information**

| | |
|-------------------|--|
| Application | WB, FC |
| Primary Accession | Q15165 |
| Reactivity | Human |
| Clonality | Monoclonal |
| Isotype | Rabbit IgG |
| Calculated MW | Predicted, 39 kDa , observed , 39, 41 kDa |
| Gene Name | KDa |
| Aliases | PON2 |
| | Paraoxonase 2; Serum |
| | Paraoxonase/Arylesterase 2; Serum |
| | Aryldialkylphosphatase 2; Aromatic |
| | Esterase 2; Paraoxonase Nirs; Arylesterase |
| | 2; A-Esterase 2; PON 2; EC 3.1.1.81; EC |
| | 3.1.1.2 |
| Immunogen | A synthesized peptide derived from human |
| | PON2 |

KD-Validated Anti-Paraoxonase 2 Rabbit Monoclonal Antibody - Additional Information

| | |
|--------------------|--|
| Gene ID | 5445 |
| Other Names | |
| | Serum paraoxonase/arylesterase 2, PON 2, 3.1.1.2, 3.1.1.81, Aromatic esterase 2, A-esterase 2, |
| | Serum aryldialkylphosphatase 2, PON2 |

KD-Validated Anti-Paraoxonase 2 Rabbit Monoclonal Antibody - Protein Information**Name** PON2**Function**

Capable of hydrolyzing lactones and a number of aromatic carboxylic acid esters. Has antioxidant activity. Is not associated with high density lipoprotein. Prevents LDL lipid peroxidation, reverses the oxidation of mildly oxidized LDL, and inhibits the ability of MM-LDL to induce monocyte chemotaxis.

Cellular Location

Membrane; Peripheral membrane protein

Tissue Location

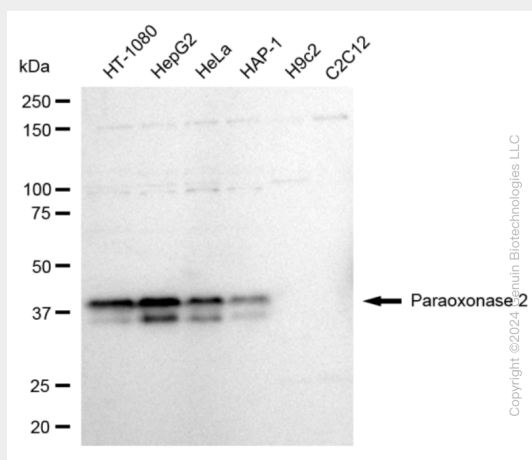
Widely expressed with highest expression in liver, lung, placenta, testis and heart.

KD-Validated Anti-Paraoxonase 2 Rabbit Monoclonal Antibody - Protocols

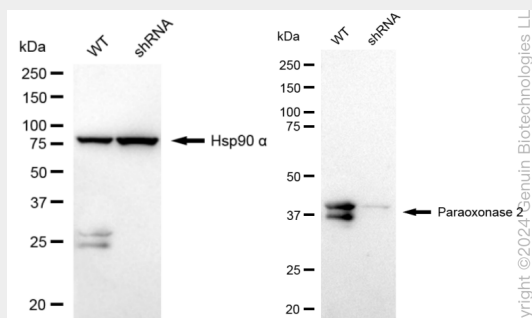
Provided below are standard protocols that you may find useful for product applications.

- [Western Blot](#)
- [Blocking Peptides](#)
- [Dot Blot](#)
- [Immunohistochemistry](#)
- [Immunofluorescence](#)
- [Immunoprecipitation](#)
- [Flow Cytometry](#)
- [Cell Culture](#)

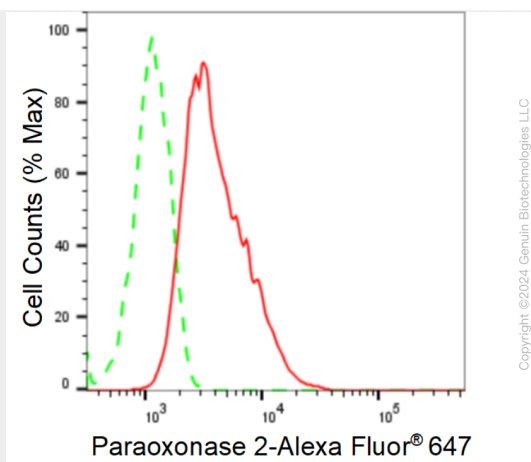
KD-Validated Anti-Paraoxonase 2 Rabbit Monoclonal Antibody - Images



Western blotting analysis using anti-Paraoxonase 2 antibody (Cat#AGI1646). Total cell lysates (30 µg) from various cell lines were loaded and separated by SDS-PAGE. The blot was incubated with anti-Paraoxonase 2 antibody (Cat#AGI1646, 1:5,000) and HRP-conjugated goat anti-rabbit secondary antibody respectively.



Western blotting analysis using anti-Paraoxonase 2 antibody (Cat#AGI1646). Paraoxonase 2 expression in wild type (WT) and Paraoxonase 2 shRNA knockdown (KD) HeLa cells with 20 µg of total cell lysates. Hsp90 α serves as a loading control. The blot was incubated with anti-Paraoxonase 2 antibody (Cat#AGI1646, 1:5,000) and HRP-conjugated goat anti-rabbit secondary antibody respectively.



Flow cytometric analysis of Paraoxonase 2 expression in HepG2 cells using anti-Paraoxonase 2 antibody (Cat#AGI1646, 1:2,000). Green, isotype control; red, Paraoxonase 2.