

KD-Validated Anti-SDHC Rabbit Monoclonal Antibody
Rabbit monoclonal antibody
Catalog # AGI1648**Specification**

KD-Validated Anti-SDHC Rabbit Monoclonal Antibody - Product Information

Application	WB, ICC
Primary Accession	Q99643
Reactivity	Rat, Human, Mouse
Clonality	Monoclonal
Isotype	Rabbit IgG
Calculated MW	Predicted, 18 kDa , observed , 12 kDa KDa
Gene Name	SDHC
Aliases	Succinate Dehydrogenase Complex Subunit C; CYB560; CybL; Succinate Dehydrogenase Complex, Subunit C, Integral Membrane Protein, 15kD; Succinate Dehydrogenase Cytochrome B560 Subunit, Mitochondrial; Succinate-Ubiquinone Oxidoreductase Cytochrome B Large Subunit; Succinate Dehydrogenase Cytochrome B; Large Subunit Of Cytochrome B; PGL3; SDH3; Succinate Dehydrogenase Complex, Subunit C, Integral Membrane Protein, 15kDa; Succinate Dehydrogenase Complex Subunit C Integral Membrane Protein 15kDa; Succinate Dehydrogenase 3, Integral Membrane Subunit; Succinate Dehydrogenase Cytochrome B560 Subunit; Cytochrome B Large Subunit Of Complex II; Integral Membrane Protein CII-3b; Integral Membrane Protein CII-3; PPGL3; QPs-1; QPS1; QPs1; CYBL
Immunogen	A synthesized peptide derived from human SDHC

KD-Validated Anti-SDHC Rabbit Monoclonal Antibody - Additional InformationGene ID **6391****Other Names**

Succinate dehydrogenase cytochrome b560 subunit, mitochondrial, Integral membrane protein CII-3, Malate dehydrogenase [quinone] cytochrome b560 subunit, QPs-1, QPs1, Succinate dehydrogenase complex subunit C, Succinate-ubiquinone oxidoreductase cytochrome B large subunit, CYBL, SDHC, CYB560, SDH3

KD-Validated Anti-SDHC Rabbit Monoclonal Antibody - Protein Information

Name SDHC

Synonyms CYB560, SDH3

Function

Membrane-anchoring subunit of succinate dehydrogenase (SDH) that is involved in complex II of the mitochondrial electron transport chain and is responsible for transferring electrons from succinate to ubiquinone (coenzyme Q) (PubMed:9533030). SDH also oxidizes malate to the non-canonical enol form of oxaloacetate, enol-oxaloacetate (By similarity). Enol-oxaloacetate, which is a potent inhibitor of the succinate dehydrogenase activity, is further isomerized into keto- oxaloacetate (By similarity).

Cellular Location

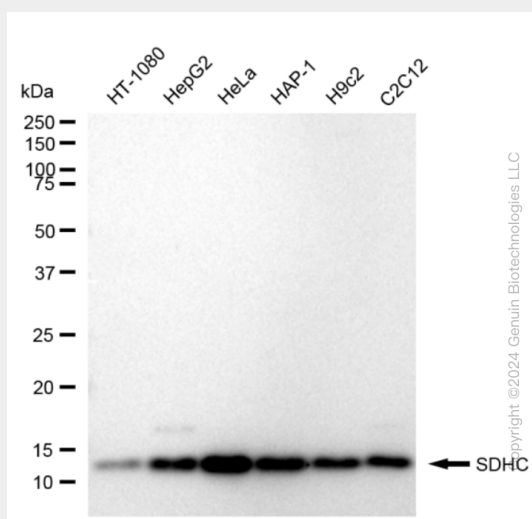
Mitochondrion inner membrane; Multi-pass membrane protein

KD-Validated Anti-SDHC Rabbit Monoclonal Antibody - Protocols

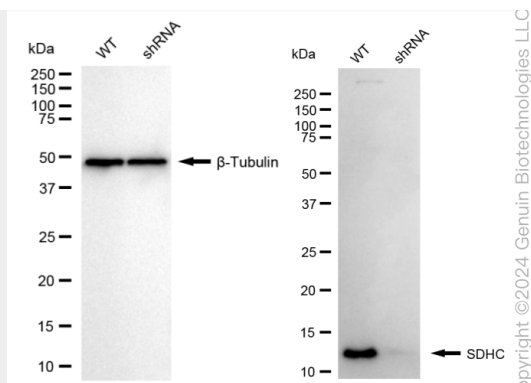
Provided below are standard protocols that you may find useful for product applications.

- [Western Blot](#)
- [Blocking Peptides](#)
- [Dot Blot](#)
- [Immunohistochemistry](#)
- [Immunofluorescence](#)
- [Immunoprecipitation](#)
- [Flow Cytometry](#)
- [Cell Culture](#)

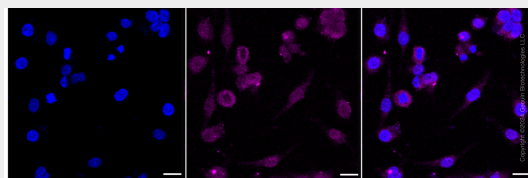
KD-Validated Anti-SDHC Rabbit Monoclonal Antibody - Images



Western blotting analysis using anti-SDHC antibody (Cat#62487). Total cell lysates (30 µg) from various cell lines were loaded and separated by SDS-PAGE. The blot was incubated with anti-SDHC antibody (Cat#62487, 1:5,000) and HRP-conjugated goat anti-rabbit secondary antibody (Cat#201, 1:20,000) respectively. Image was developed using FeQ™ ECL Substrate Kit (Cat#226).



Western blotting analysis using anti-SDHC antibody (Cat#62487). SDHC expression in wild type (WT) and SDHC shRNA knockdown (KD) HeLa cells with 20 µg of total cell lysates. β-Tubulin serves as a loading control. The blot was incubated with anti-SDHC antibody (Cat#62487, 1:5,000) and HRP-conjugated goat anti-rabbit secondary antibody (Cat#201, 1:20,000) respectively. Image was developed using NaQ™ ECL Substrate Kit (Cat#716).



Immunocytochemical staining of HeLa cells with anti-SDHC antibody (Cat#62487, 1:1,000). Nuclei were stained blue with DAPI; SDHC was stained magenta with Alexa Fluor® 647. Images were taken using Leica stellaris 5. Protein abundance based on laser Intensity and smart gain:Low. Scale bar: 20 µm.