

KD-Validated Anti-RAD23A Rabbit Monoclonal Antibody
Rabbit monoclonal antibody
Catalog # AGI1649**Specification**

KD-Validated Anti-RAD23A Rabbit Monoclonal Antibody - Product Information

Application	WB, FC, ICC
Primary Accession	P54725
Reactivity	Human, Mouse
Clonality	Monoclonal
Isotype	Rabbit IgG
Calculated MW	Predicted, 40 kDa , observed , 55 kDa KDa
Gene Name	RAD23A
Aliases	RAD23 Homolog A, Nucleotide Excision Repair Protein; HHR23A; UV Excision Repair Protein RAD23 Homolog A; RAD23, Yeast Homolog, A; MGC111083; HR23A; RAD23 (S. Cerevisiae) Homolog A; RAD23 Homolog A (S. Cerevisiae)
Immunogen	A synthesized peptide derived from human RAD23A

KD-Validated Anti-RAD23A Rabbit Monoclonal Antibody - Additional Information

Gene ID	5886
Other Names	
UV excision repair protein RAD23 homolog A, HR23A, hHR23A, RAD23A	

KD-Validated Anti-RAD23A Rabbit Monoclonal Antibody - Protein Information**Name** RAD23A**Function**

Multiubiquitin chain receptor involved in modulation of proteasomal degradation. Binds to 'Lys-48'-linked polyubiquitin chains in a length-dependent manner and with a lower affinity to 'Lys-63'- linked polyubiquitin chains. Proposed to be capable to bind simultaneously to the 26S proteasome and to polyubiquitinated substrates and to deliver ubiquitinated proteins to the proteasome. (Microbial infection) Involved in Vpr-dependent replication of HIV-1 in non-proliferating cells and primary macrophages. Required for the association of HIV-1 Vpr with the host proteasome.

Cellular Location

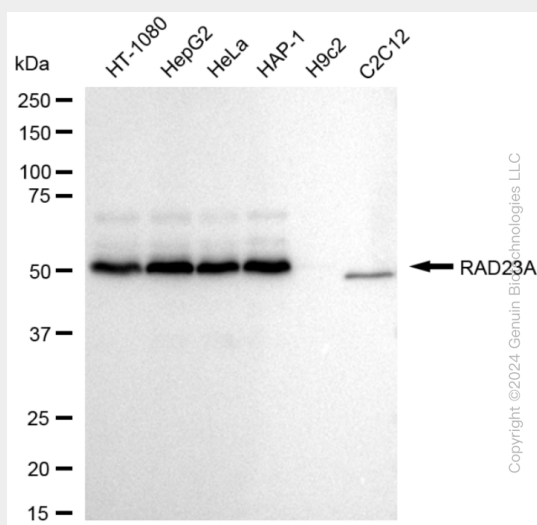
Nucleus.

KD-Validated Anti-RAD23A Rabbit Monoclonal Antibody - Protocols

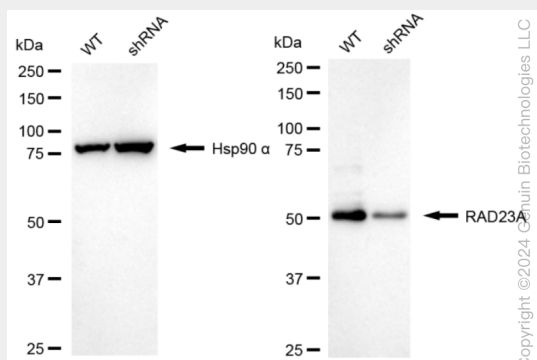
Provided below are standard protocols that you may find useful for product applications.

- [Western Blot](#)
- [Blocking Peptides](#)
- [Dot Blot](#)
- [Immunohistochemistry](#)
- [Immunofluorescence](#)
- [Immunoprecipitation](#)
- [Flow Cytometry](#)
- [Cell Culture](#)

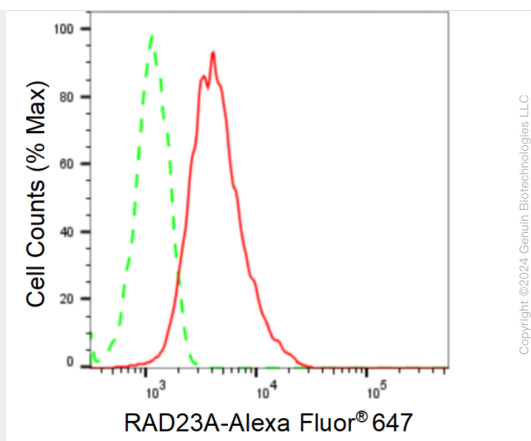
KD-Validated Anti-RAD23A Rabbit Monoclonal Antibody - Images



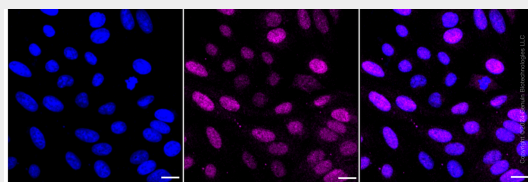
Western blotting analysis using anti-RAD23A antibody (Cat#AGI1649). Total cell lysates (30 µg) from various cell lines were loaded and separated by SDS-PAGE. The blot was incubated with anti-RAD23A antibody (Cat#AGI1649, 1:5,000) and HRP-conjugated goat anti-rabbit secondary antibody respectively.



Western blotting analysis using anti-RAD23A antibody (Cat#AGI1649). RAD23A expression in wild type (WT) and RAD23A shRNA knockdown (KD) HeLa cells with 20 µg of total cell lysates. Hsp90 α serves as a loading control. The blot was incubated with anti-RAD23A antibody (Cat#AGI1649, 1:5,000) and HRP-conjugated goat anti-rabbit secondary antibody respectively.



Flow cytometric analysis of RAD23A expression in HepG2 cells using anti-RAD23A antibody (Cat#AGI1649, 1:2,000). Green, isotype control; red, RAD23A.



Immunocytochemical staining of HepG2 cells with anti-RAD23A antibody (Cat#AGI1649, 1:1,000). Nuclei were stained blue with DAPI; RAD23A was stained magenta with Alexa Fluor® 647. Images were taken using Leica stellaris 5. Protein abundance based on laser Intensity and smart gain: Medium. Scale bar: 20 μ m.