

KD-Validated Anti-SAMM50 Rabbit Monoclonal Antibody
Rabbit monoclonal antibody
Catalog # AGI1654**Specification****KD-Validated Anti-SAMM50 Rabbit Monoclonal Antibody - Product Information**

Application	WB, FC, ICC
Primary Accession	Q9Y512
Reactivity	Rat, Human, Mouse
Clonality	Monoclonal
Isotype	Rabbit IgG
Calculated MW	Predicted, 52 kDa , observed , 52 kDa KDa
Gene Name	SAMM50
Aliases	SAMM50 Sorting And Assembly Machinery Component; TRG-3; SAM50; YNL026W; CGI-51; OMP85; TOB55; Sorting And Assembly Machinery Component 50 Homolog; Transformation-Related Gene 3 Protein; Sorting And Assembly Machinery Component 50 Homolog (S. Cerevisiae); Sorting And Assembly Machinery 50kDa A synthesized peptide derived from human SAMM50
Immunogen	

KD-Validated Anti-SAMM50 Rabbit Monoclonal Antibody - Additional Information

Gene ID	25813
Other Names	
Sorting and assembly machinery component 50 homolog, Transformation-related gene 3 protein, TRG-3, SAMM50, SAM50	

KD-Validated Anti-SAMM50 Rabbit Monoclonal Antibody - Protein Information**Name** SAMM50**Synonyms** SAM50**Function**

Plays a crucial role in the maintenance of the structure of mitochondrial cristae and the proper assembly of the mitochondrial respiratory chain complexes (PubMed:22252321, PubMed:25781180). Required for the assembly of TOMM40 into the TOM complex (PubMed:15644312).

Cellular Location

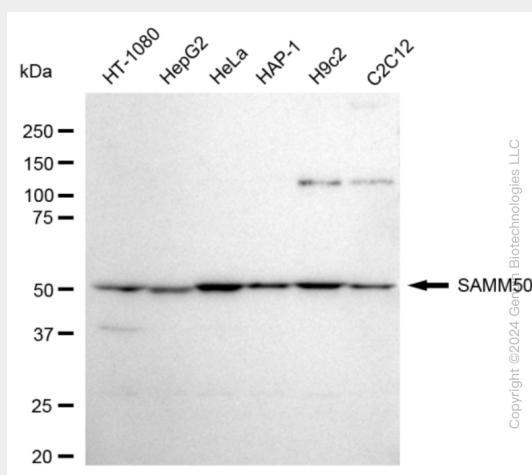
Mitochondrion outer membrane; Multi-pass membrane protein. Cytoplasm {ECO:0000250|UniProtKB:Q6AXV4}. Mitochondrion

KD-Validated Anti-SAMM50 Rabbit Monoclonal Antibody - Protocols

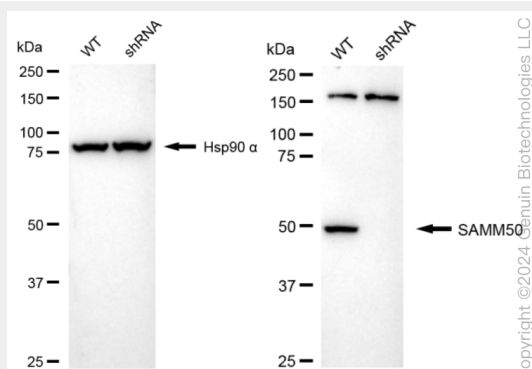
Provided below are standard protocols that you may find useful for product applications.

- [Western Blot](#)
- [Blocking Peptides](#)
- [Dot Blot](#)
- [Immunohistochemistry](#)
- [Immunofluorescence](#)
- [Immunoprecipitation](#)
- [Flow Cytometry](#)
- [Cell Culture](#)

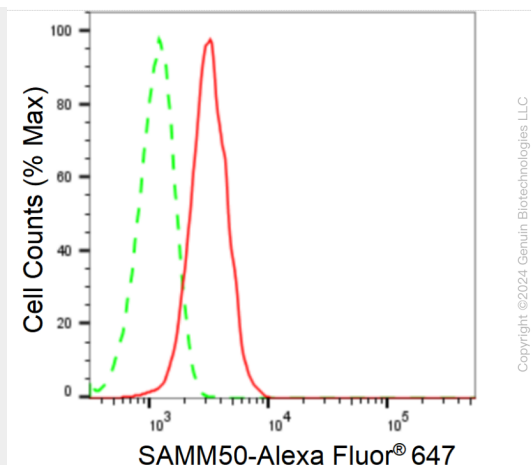
KD-Validated Anti-SAMM50 Rabbit Monoclonal Antibody - Images



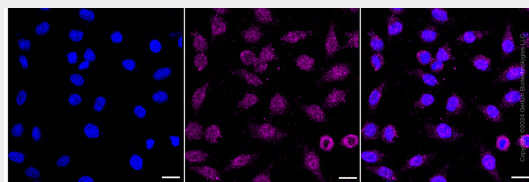
Western blotting analysis using anti-SAMM50 antibody (Cat#AGI1654). Total cell lysates (30 µg) from various cell lines were loaded and separated by SDS-PAGE. The blot was incubated with anti-SAMM50 antibody (Cat#AGI1654, 1:5,000) and HRP-conjugated goat anti-rabbit secondary antibody respectively.



Western blotting analysis using anti-SAMM50 antibody (Cat#AGI1654). SAMM50 expression in wild type (WT) and SAMM50 shRNA knockdown (KD) HeLa cells with 20 µg of total cell lysates. Hsp90 α serves as a loading control. The blot was incubated with anti-SAMM50 antibody (Cat#AGI1654, 1:5,000) and HRP-conjugated goat anti-rabbit secondary antibody respectively.



Flow cytometric analysis of SMM50 expression in HeLa cells using SMM50 antibody (Cat#AGI1654, 1:2,000). Green, isotype control; red, SMM50.



Immunocytochemical staining of HeLa cells with anti-SMM50 antibody (Cat#AGI1654, 1:1,000). Nuclei were stained blue with DAPI; SMM50 was stained magenta with Alexa Fluor® 647. Images were taken using Leica stellaris 5. Protein abundance based on laser Intensity and smart gain:Medium. Scale bar: 20 µm.