

**KD-Validated Anti-PELP1 Rabbit Monoclonal Antibody**  
**Rabbit monoclonal antibody**  
**Catalog # AGI1655****Specification****KD-Validated Anti-PELP1 Rabbit Monoclonal Antibody - Product Information**

|                   |   |
|-------------------|---|
| Application       | WB, FC  |
| Primary Accession | <a href="#">Q8IZL8</a>  |
| Reactivity        | Rat, Human, Mouse   |
| Clonality         | Monoclonal  |
| Isotype           | Rabbit IgG  |
| Calculated MW     | Predicted, 120 kDa , observed , 160 kDa   |
| Gene Name         | KDa   |
| Aliases           | PELP1<br>Proline, Glutamate And Leucine Rich Protein 1; MNAR; Modulator Of Non-Genomic Activity Of Estrogen Receptor; Proline-, Glutamic Acid- And Leucine-Rich Protein 1; Transcription Factor HMX3; Proline, Glutamic Acid And Leucine Rich Protein 1; Proline And Glutamic Acid Rich Nuclear Protein; P160; HMX3 |
| Immunogen         | A synthesized peptide derived from human PELP1  |

**KD-Validated Anti-PELP1 Rabbit Monoclonal Antibody - Additional Information**

|   |       |
|---|-------|
| Gene ID   | 27043 |
| <b>Other Names</b>  |       |
| Proline-, glutamic acid- and leucine-rich protein 1, Modulator of non-genomic activity of estrogen receptor, Transcription factor HMX3, PELP1, HMX3, MNAR |       |

**KD-Validated Anti-PELP1 Rabbit Monoclonal Antibody - Protein Information****Name** PELP1**Synonyms** HMX3, MNAR**Function**

Coactivator of estrogen receptor-mediated transcription and a corepressor of other nuclear hormone receptors and sequence-specific transcription factors (PubMed:<a href="http://www.uniprot.org/citations/14963108" target="\_blank">14963108</a>). Plays a role in estrogen receptor (ER) genomic activity when present in the nuclear compartment by activating the ER target genes in a hormonal stimulation dependent manner. Can facilitate ER non-genomic signaling via SRC and PI3K interaction in the cytosol. Plays a role in E2-mediated cell cycle progression by interacting with RB1. May have important functional implications in ER/growth factor cross-talk. Interacts with several growth factor signaling components including EGFR and

HRS. Functions as the key stabilizing component of the Five Friends of Methylated CHTOP (5FMC) complex; the 5FMC complex is recruited to ZNF148 by methylated CHTOP, leading to desumoylation of ZNF148 and subsequent transactivation of ZNF148 target genes. Component of the PELP1 complex involved in the nucleolar steps of 28S rRNA maturation and the subsequent nucleoplasmic transit of the pre-60S ribosomal subunit. Regulates pre-60S association of the critical remodeling factor MDN1 (PubMed:<a href="http://www.uniprot.org/citations/21326211" target="\_blank">21326211</a>). May promote tumorigenesis via its interaction with and modulation of several oncogenes including SRC, PI3K, STAT3 and EGFR. Plays a role in cancer cell metastasis via its ability to modulate E2-mediated cytoskeleton changes and cell migration via its interaction with SRC and PI3K.

#### Cellular Location

Nucleus, nucleolus. Nucleus, nucleoplasm. Nucleus. Cytoplasm Note=Mainly found in the nucleoplasm, with low levels detected in the cytoplasm (By similarity). Also found associated with the plasma membrane. Mainly in cytoplasm in a subset of breast tumors Localization is widely deregulated in endometrial cancers with predominantly cytoplasm localization in high-grade endometrial tumors (PubMed:16140940). {ECO:0000250|UniProtKB:Q9DBD5, ECO:0000269|PubMed:16140940}

#### Tissue Location

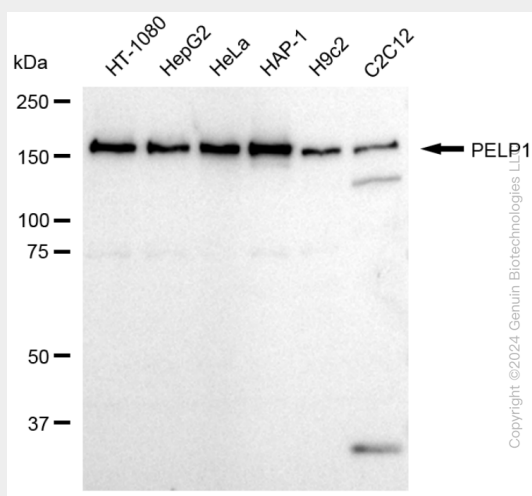
Widely expressed..

### KD-Validated Anti-PELP1 Rabbit Monoclonal Antibody - Protocols

Provided below are standard protocols that you may find useful for product applications.

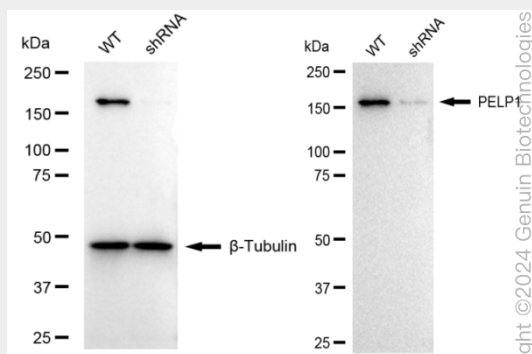
- [Western Blot](#)
- [Blocking Peptides](#)
- [Dot Blot](#)
- [Immunohistochemistry](#)
- [Immunofluorescence](#)
- [Immunoprecipitation](#)
- [Flow Cytometry](#)
- [Cell Culture](#)

### KD-Validated Anti-PELP1 Rabbit Monoclonal Antibody - Images

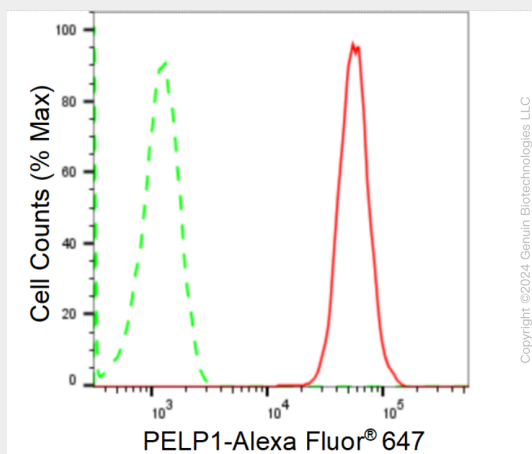


Western blotting analysis using anti-PELP1 antibody (Cat#AGI1655). Total cell lysates (30 µg)

from various cell lines were loaded and separated by SDS-PAGE. The blot was incubated with anti-PELP1 antibody (Cat#AGI1655, 1:5,000) and HRP-conjugated goat anti-rabbit secondary antibody respectively.



Western blotting analysis using anti-PELP1 antibody (Cat#AGI1655). PELP1 expression in wild type (WT) and PELP1 shRNA knockdown (KD) HeLa cells with 20 µg of total cell lysates. β-Tubulin serves as a loading control. The blot was incubated with anti-PELP1 antibody (Cat#AGI1655, 1:5,000) and HRP-conjugated goat anti-rabbit secondary antibody respectively.



Flow cytometric analysis of PELP1 expression in HAP-1 cells using anti-PELP1 antibody (Cat#AGI1655, 1:2,000). Green, isotype control; red, PELP1.