

**KD-Validated Anti-Fibronectin 1 Rabbit Monoclonal Antibody**  
**Rabbit monoclonal antibody**  
**Catalog # AGI1658****Specification****KD-Validated Anti-Fibronectin 1 Rabbit Monoclonal Antibody - Product Information**

Application	WB, ICC
Primary Accession	<a href="#">P02751</a>
Reactivity	Human
Clonality	Monoclonal
Isotype	Rabbit IgG
Calculated MW	Predicted, 263 kDa , observed, 263 kDa
Gene Name	KDa
Aliases	FN1 Fibronectin 1; CIG; Cold-Insoluble Globulin; GFND2; LETS; FINC; MSF; Migration-Stimulating Factor; Lnc-ABCA12-8; Fibronectin; FN; Epididymis Secretory Sperm Binding Protein; LNC-ABCA12-8; SMDCF; ED-B; GFND; FNZ A synthesized peptide derived from human Fibronectin
Immunogen	

**KD-Validated Anti-Fibronectin 1 Rabbit Monoclonal Antibody - Additional Information**

Gene ID	2335
<b>Other Names</b>	
Fibronectin, FN, Cold-insoluble globulin, CIG, Anastellin, Ugl-Y1, Ugl-Y2, Ugl-Y3, FN1 (<a href="http://www.genenames.org/cgi-bin/gene_symbol_report?hgnc_id=3778" target="_blank">HGNC:3778</a>), FN	

**KD-Validated Anti-Fibronectin 1 Rabbit Monoclonal Antibody - Protein Information****Name** FN1 ([HGNC:3778](#))**Synonyms** FN**Function**

Fibronectins bind cell surfaces and various compounds including collagen, fibrin, heparin, DNA, and actin (PubMed:<a href="http://www.uniprot.org/citations/3024962" target="\_blank">3024962</a>, PubMed:<a href="http://www.uniprot.org/citations/3593230" target="\_blank">3593230</a>, PubMed:<a href="http://www.uniprot.org/citations/3900070" target="\_blank">3900070</a>, PubMed:<a href="http://www.uniprot.org/citations/7989369" target="\_blank">7989369</a>). Fibronectins are involved in cell adhesion, cell motility, opsonization, wound healing, and maintenance of cell shape (PubMed:<a href="http://www.uniprot.org/citations/3024962" target="\_blank">3024962</a>, PubMed:<a href="http://www.uniprot.org/citations/3593230" target="\_blank">3593230</a>, PubMed:<a href="http://www.uniprot.org/citations/3900070" target="\_blank">3900070</a>, PubMed:<a href="http://www.uniprot.org/citations/7989369" target="\_blank">7989369</a>).

href="http://www.uniprot.org/citations/7989369" target="\_blank">7989369</a>). Involved in osteoblast compaction through the fibronectin fibrillogenesis cell-mediated matrix assembly process, essential for osteoblast mineralization (By similarity). Participates in the regulation of type I collagen deposition by osteoblasts (By similarity). Acts as a ligand for the LILRB4 receptor, inhibiting FCGR1A/CD64-mediated monocyte activation (PubMed:<a href="http://www.uniprot.org/citations/34089617" target="\_blank">34089617</a>).

#### Cellular Location

Secreted, extracellular space, extracellular matrix. Secreted {ECO:0000250|UniProtKB:P11276}

#### Tissue Location

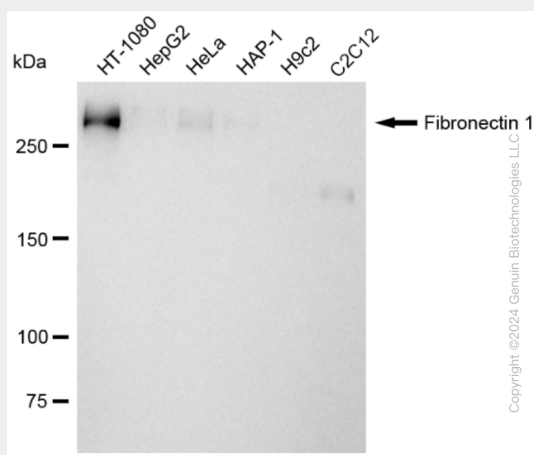
Expressed in the inner limiting membrane and around blood vessels in the retina (at protein level) (PubMed:29777959) Plasma FN (soluble dimeric form) is secreted by hepatocytes. Cellular FN (dimeric or cross-linked multimeric forms), made by fibroblasts, epithelial and other cell types, is deposited as fibrils in the extracellular matrix. Ugl-Y1, Ugl-Y2 and Ugl-Y3 are found in urine (PubMed:17614963).

### KD-Validated Anti-Fibronectin 1 Rabbit Monoclonal Antibody - Protocols

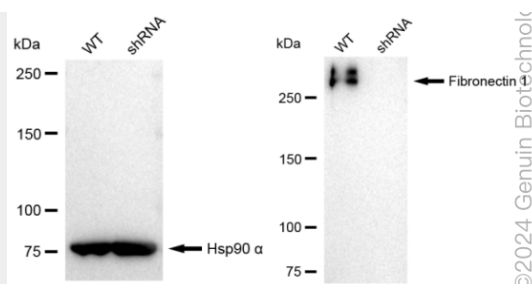
Provided below are standard protocols that you may find useful for product applications.

- [Western Blot](#)
- [Blocking Peptides](#)
- [Dot Blot](#)
- [Immunohistochemistry](#)
- [Immunofluorescence](#)
- [Immunoprecipitation](#)
- [Flow Cytometry](#)
- [Cell Culture](#)

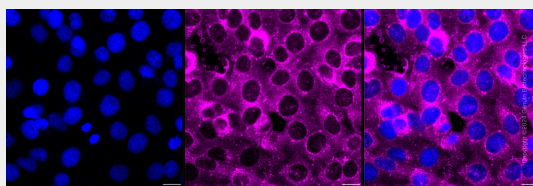
### KD-Validated Anti-Fibronectin 1 Rabbit Monoclonal Antibody - Images



Western blotting analysis using anti-Fibronectin 1 antibody (Cat#AGI1658). Total cell lysates (30 µg) from various cell lines were loaded and separated by SDS-PAGE. The blot was incubated with anti-Fibronectin 1 antibody (Cat#AGI1658, 1:5,000) and HRP-conjugated goat anti-rabbit secondary antibody respectively.



Western blotting analysis using anti-Fibronectin 1 antibody (Cat#AGI1658). Fibronectin 1 expression in wild type (WT) and fibronectin 1 shRNA knockdown (KD) HeLa cells with 30 µg of total cell lysates. Hsp90 α serves as a loading control. The blot was incubated with anti-Fibronectin 1 antibody (Cat#AGI1658, 1:5,000) and HRP-conjugated goat anti-rabbit secondary antibody respectively.



Immunocytochemical staining of HT-1080 cells with Fibronectin 1 antibody (Cat#AGI1658, 1:1,000). Nuclei were stained blue with DAPI; Fibronectin 1 was stained magenta with Alexa Fluor® 647. Images were taken using Leica stellaris 5. Protein abundance based on laser Intensity and smart gain: Medium. Scale bar: 20 µm.