

KD-Validated Anti-DNAJC12 Rabbit Monoclonal Antibody
Rabbit monoclonal antibody
Catalog # AGI1660**Specification****KD-Validated Anti-DNAJC12 Rabbit Monoclonal Antibody - Product Information**

Application	WB, FC, ICC
Primary Accession	Q9UKB3
Reactivity	Human
Clonality	Monoclonal
Isotype	Rabbit IgG
Calculated MW	Predicted, 23 kDa, observed, 23 kDa
Gene Name	KDa DNAJC12
Aliases	DNAJC12; DnaJ Heat Shock Protein Family (Hsp40) Member C12; JDP1; DnaJ (Hsp40) Homolog, Subfamily C, Member 12; DnaJ Homolog Subfamily C Member 12; J Domain-Containing Protein; J Domain Protein; J Domain Containing Protein 1 (JDP1); HPANBH4
Immunogen	A synthesized peptide derived from human DNAJC12

KD-Validated Anti-DNAJC12 Rabbit Monoclonal Antibody - Additional Information

Gene ID	56521
Other Names	
DnaJ homolog subfamily C member 12, J domain-containing protein 1, DNAJC12, JDP1	

KD-Validated Anti-DNAJC12 Rabbit Monoclonal Antibody - Protein Information**Name** DNAJC12**Synonyms** JDP1**Function**

Probable co-chaperone that participates in the proper folding of biotin-dependent aromatic amino acid hydroxylases, which include phenylalanine-4-hydroxylase (PAH), tyrosine 3-monooxygenase (TH) and peripheral and neuronal tryptophan hydroxylases (TPH1 and TPH2).

Cellular Location

[Isoform a]: Cytoplasm

Tissue Location

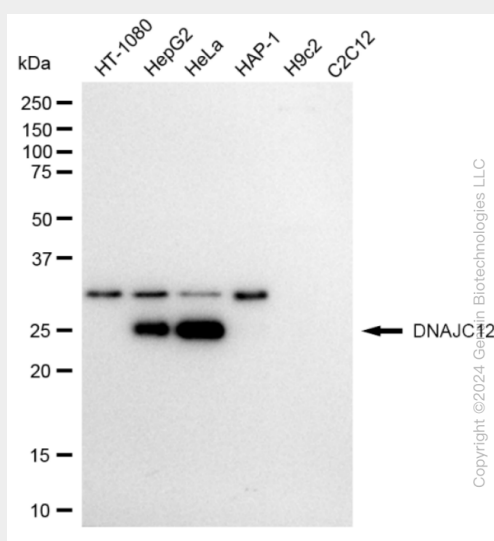
Expressed at high levels in brain, heart, and testis, and at reduced levels in kidney and stomach

KD-Validated Anti-DNAJC12 Rabbit Monoclonal Antibody - Protocols

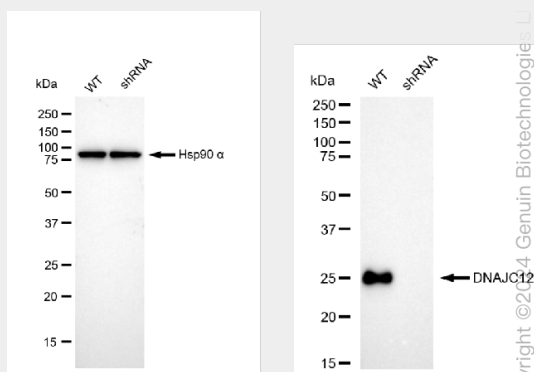
Provided below are standard protocols that you may find useful for product applications.

- [Western Blot](#)
- [Blocking Peptides](#)
- [Dot Blot](#)
- [Immunohistochemistry](#)
- [Immunofluorescence](#)
- [Immunoprecipitation](#)
- [Flow Cytometry](#)
- [Cell Culture](#)

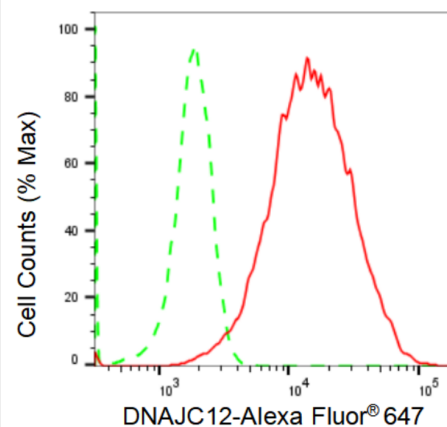
KD-Validated Anti-DNAJC12 Rabbit Monoclonal Antibody - Images



Western blotting analysis using anti-DNAJC12 antibody (Cat#AGI1660). Total cell lysates (30 µg) from various cell lines were loaded and separated by SDS-PAGE. The blot was incubated with anti-DNAJC12 antibody (Cat#AGI1660, 1:5,000) and HRP-conjugated goat anti-rabbit secondary antibody respectively.

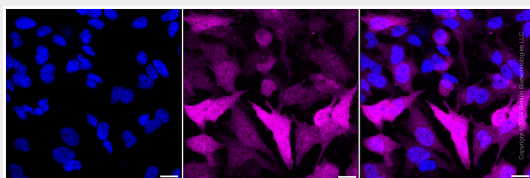


Western blotting analysis using anti-DNAJC12 antibody (Cat#AGI1660). DNAJC12 expression in wild type (WT) and DNAJC12 shRNA knockdown (KD) HeLa cells with 30 µg of total cell lysates. β-Tubulin serves as a loading control. The blot was incubated with anti-DNAJC12 antibody (Cat#AGI1660, 1:5,000) and HRP-conjugated goat anti-rabbit secondary antibody respectively.



Copyright ©2024 Genuin Biotechnologies LLC

Flow cytometric analysis of DNAJC12 expression in HeLa cells using DNAJC12 antibody (Cat#AGI1660, 1:2,000). Green, isotype control; red, DNAJC12.



Immunocytochemical staining of HeLa cells with DNAJC12 antibody (Cat#AGI1660, 1:1,000). Nuclei were stained blue with DAPI; DNAJC12 was stained magenta with Alexa Fluor® 647. Images were taken using Leica stellaris 5. Protein abundance based on laser Intensity and smart gain: Low. Scale bar: 20 µm.