

KD-Validated Anti-PPP2R5E Rabbit Monoclonal Antibody
Rabbit monoclonal antibody
Catalog # AGI1661**Specification****KD-Validated Anti-PPP2R5E Rabbit Monoclonal Antibody - Product Information**

Application	WB, FC, ICC
Primary Accession	Q16537
Reactivity	Rat, Human, Mouse
Clonality	Monoclonal
Isotype	Rabbit IgG
Calculated MW	Predicted, 55 kDa , observed , 50 kDa KDa
Gene Name	PPP2R5E
Aliases	Protein Phosphatase 2 Regulatory Subunit B'Epsilon; B56epsilon; B56E; Serine/Threonine-Protein Phosphatase 2A 56 KDa Regulatory Subunit Epsilon Isoform; Serine/Threonine Protein Phosphatase 2A, 56 KDa Regulatory Subunit, Epsilon; Protein Phosphatase 2, Regulatory Subunit B (B56), Epsilon Isoform; Protein Phosphatase 2 Regulatory Subunit B', Epsilon; PP2A B Subunit Isoform PR61-Epsilon; PP2A B Subunit Isoform B56-Epsilon; PP2A B Subunit Isoform B'-Epsilon; PP2A B Subunit Isoform R5-Epsilon; PP2A, B Subunit, PR61 Epsilon; PP2A, B Subunit, B56 Epsilon; PP2A, B Subunit, B' Epsilon; PP2A, B Subunit, R5 Epsilon
Immunogen	A synthesized peptide derived from human PPP2R5E

KD-Validated Anti-PPP2R5E Rabbit Monoclonal Antibody - Additional Information

Gene ID	5529
Other Names	Serine/threonine-protein phosphatase 2A 56 kDa regulatory subunit epsilon isoform, PP2A B subunit isoform B'-epsilon, PP2A B subunit isoform B56-epsilon, PP2A B subunit isoform PR61-epsilon, PP2A B subunit isoform R5-epsilon, PPP2R5E

KD-Validated Anti-PPP2R5E Rabbit Monoclonal Antibody - Protein Information**Name** PPP2R5E**Function**

The B regulatory subunit might modulate substrate selectivity and catalytic activity, and might also direct the localization of the catalytic enzyme to a particular subcellular compartment.

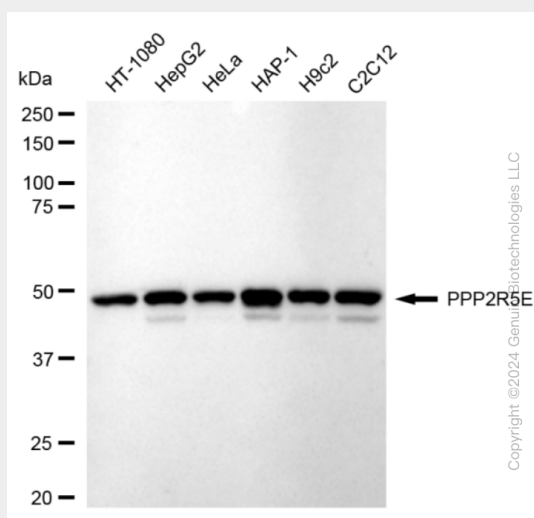
Cellular Location
Cytoplasm.

KD-Validated Anti-PPP2R5E Rabbit Monoclonal Antibody - Protocols

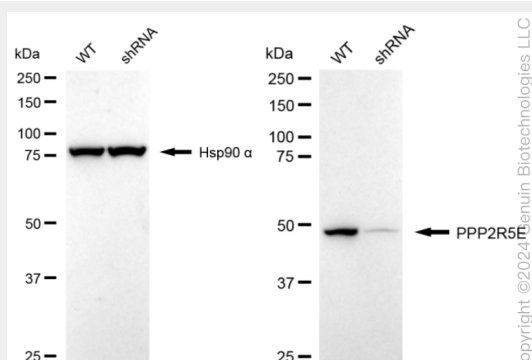
Provided below are standard protocols that you may find useful for product applications.

- [Western Blot](#)
- [Blocking Peptides](#)
- [Dot Blot](#)
- [Immunohistochemistry](#)
- [Immunofluorescence](#)
- [Immunoprecipitation](#)
- [Flow Cytometry](#)
- [Cell Culture](#)

KD-Validated Anti-PPP2R5E Rabbit Monoclonal Antibody - Images

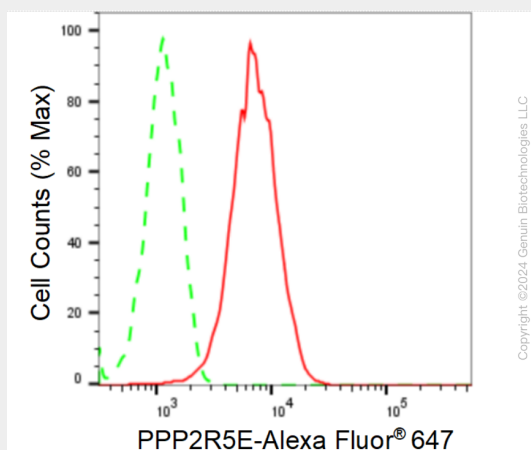


Western blotting analysis using anti-PPP2R5E antibody (Cat#AGI1661). Total cell lysates (30 µg) from various cell lines were loaded and separated by SDS-PAGE. The blot was incubated with anti-PPP2R5E antibody (Cat#AGI1661, 1:5,000) and HRP-conjugated goat anti-rabbit secondary antibody respectively.

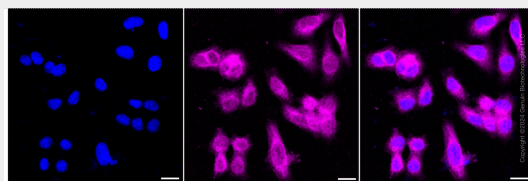


Western blotting analysis using anti-PPP2R5E antibody (Cat#AGI1661). PPP2R5E expression in wild type (WT) and PPP2R5E shRNA knockdown (KD) HeLa cells with 20 µg of total cell lysates. Hsp90 α serves as a loading control. The blot was incubated with anti-PPP2R5E antibody

(Cat#AGI1661, 1:5,000) and HRP-conjugated goat anti-rabbit secondary antibody respectively.



Flow cytometric analysis of PPP2R5E expression in HepG2 cells using anti-PPP2R5E antibody (Cat#AGI1661, 1:2,000). Green, isotype control; red, PPP2R5E.



Immunocytochemical staining of HepG2 cells with anti-PPP2R5E antibody (Cat#AGI1661, 1:1,000). Nuclei were stained blue with DAPI; PPP2R5E was stained magenta with Alexa Fluor® 647. Images were taken using Leica stellaris 5. Protein abundance based on laser Intensity and smart gain: Medium. Scale bar: 20 µm.