

KD-Validated Anti-Ribosomal Protein S6 Kinase B2 Rabbit Monoclonal Antibody
Rabbit monoclonal antibody
Catalog # AGI1663

Specification

KD-Validated Anti-Ribosomal Protein S6 Kinase B2 Rabbit Monoclonal Antibody - Product Information

Application	WB, FC, ICC
Primary Accession	Q9UBS0
Reactivity	Rat, Human, Mouse
Clonality	Monoclonal
Isotype	Rabbit IgG
Calculated MW	Predicted, 53 kDa , observed , 53 kDa KDa
Gene Name	RPS6KB2
Aliases	Ribosomal Protein S6 Kinase B2; STK14B; P70-BETA; P70S6Kb; S6Kbeta; S6KB; KLS; 70 KDa Ribosomal Protein S6 Kinase 2; Serine/Threonine-Protein Kinase 14B; Ribosomal Protein S6 Kinase Beta-2; P70 Ribosomal S6 Kinase Beta; S6 Kinase-Related Kinase; P70 S6 Kinase Beta; P70 S6K-Beta; EC 2.7.11.1; S6K-Beta-2; P70-S6K 2; S6K-Beta; P70 S6KB; P70S6K2; S6K2; SRK; Ribosomal Protein S6 Kinase, 70kDa, Polypeptide 2; Ribosomal Protein S6 Kinase, 70kD, Polypeptide 2; Serine/Threonine-Protein Kinase 14 Beta; P70(S6K)-Beta; P70-Beta-1; P70-Beta-2; S6K-Beta2; EC 2.7.11; P70-Beta; S6KI(2); S6Kβ
Immunogen	A synthesized peptide derived from human P70 S6 Kinase beta

KD-Validated Anti-Ribosomal Protein S6 Kinase B2 Rabbit Monoclonal Antibody - Additional Information

Gene ID	6199
Other Names	Ribosomal protein S6 kinase beta-2, S6K-beta-2, S6K2, 2.7.11.1, 70 kDa ribosomal protein S6 kinase 2, P70S6K2, p70-S6K 2, S6 kinase-related kinase, SRK, Serine/threonine-protein kinase 14B, p70 ribosomal S6 kinase beta, S6K-beta, p70 S6 kinase beta, p70 S6K-beta, p70 S6KB, p70-beta, RPS6KB2, STK14B

KD-Validated Anti-Ribosomal Protein S6 Kinase B2 Rabbit Monoclonal Antibody - Protein Information

Name RPS6KB2

Synonyms STK14B

Function

Phosphorylates specifically ribosomal protein S6 (PubMed:29750193). Seems to act downstream of mTOR signaling in response to growth factors and nutrients to promote cell proliferation, cell growth and cell cycle progression in an alternative pathway regulated by MEAK7 (PubMed:29750193).

Cellular Location

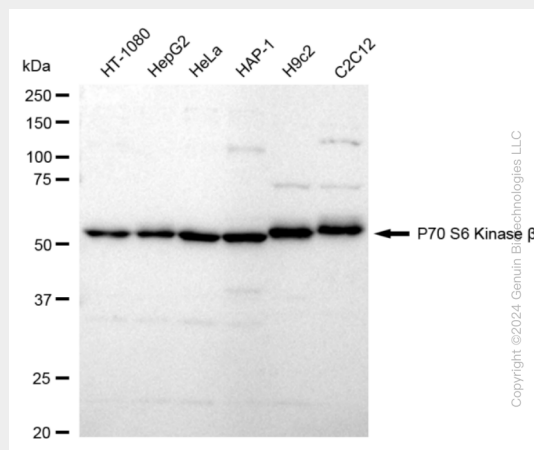
Cytoplasm. Nucleus.

KD-Validated Anti-Ribosomal Protein S6 Kinase B2 Rabbit Monoclonal Antibody - Protocols

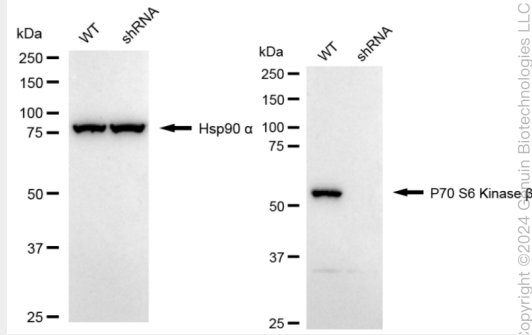
Provided below are standard protocols that you may find useful for product applications.

- [Western Blot](#)
- [Blocking Peptides](#)
- [Dot Blot](#)
- [Immunohistochemistry](#)
- [Immunofluorescence](#)
- [Immunoprecipitation](#)
- [Flow Cytometry](#)
- [Cell Culture](#)

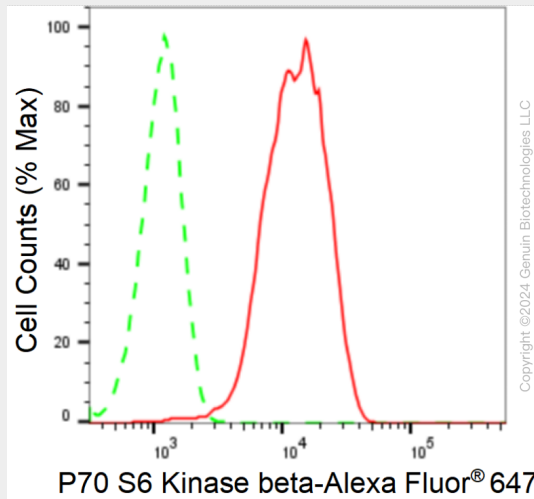
KD-Validated Anti-Ribosomal Protein S6 Kinase B2 Rabbit Monoclonal Antibody - Images



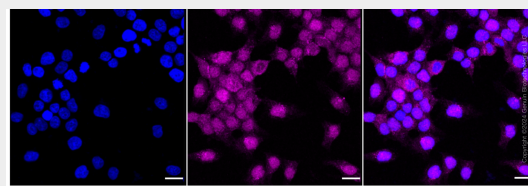
Western blotting analysis using anti-P70 S6 Kinase beta antibody (Cat#AGI1663). Total cell lysates (30 µg) from various cell lines were loaded and separated by SDS-PAGE. The blot was incubated with anti-R70 S6 Kinase beta antibody (Cat#AGI1663, 1:5,000) and HRP-conjugated goat anti-rabbit secondary antibody respectively.



Western blotting analysis using anti-P70 S6 Kinase β antibody (Cat#AGI1663). P70 S6 Kinase β expression in wild type (WT) and P70 S6 Kinase β shRNA knockdown (KD) HeLa cells with 20 μ g of total cell lysates. Hsp90 α serves as a loading control. The blot was incubated with anti-P70 S6 Kinase β antibody (Cat#AGI1663, 1:5,000) and HRP-conjugated goat anti-rabbit secondary antibody respectively.



Flow cytometric analysis of P70 S6 Kinase β expression in HeLa cells using P70 S6 Kinase β antibody (Cat#AGI1663, 1:2,000). Green, isotype control; red, P70 S6 Kinase β .



Immunocytochemical staining of HeLa cells with anti-P70 S6 Kinase β antibody (Cat#AGI1663, 1:1,000). Nuclei were stained blue with DAPI; P70 S6 Kinase β was stained magenta with Alexa Fluor[®] 647. Images were taken using Leica stellaris 5. Protein abundance based on laser Intensity and smart gain: Medium. Scale bar: 20 μ m.