

**KD-Validated Anti-Plexin A1 Rabbit Monoclonal Antibody**  
**Rabbit monoclonal antibody**  
**Catalog # AGI1665****Specification****KD-Validated Anti-Plexin A1 Rabbit Monoclonal Antibody - Product Information**

Application	WB
Primary Accession	<a href="#">Q9UIW2</a>
Reactivity	Rat, Human, Mouse
Clonality	Monoclonal
Isotype	Rabbit IgG
Calculated MW	Predicted, 211 kDa , observed , 240 kDa
Gene Name	KDa
Aliases	PLXNA1
	PLXNA1; Plexin A1; NOV; PLXN1;
	Semaphorin Receptor NOV; PLEXIN-A1;
	Plexin-A1; Plexin 1; DWOPNED; NOV
Immunogen	A synthesized peptide derived from human Plexin A1

**KD-Validated Anti-Plexin A1 Rabbit Monoclonal Antibody - Additional Information**

Gene ID	5361
<b>Other Names</b>	
Plexin-A1, Semaphorin receptor NOV, PLXNA1 (<a href="http://www.genenames.org/cgi-bin/gene_symbol_report?hgnc_id=9099" target="_blank">HGNC:9099</a>), NOV, PLXN1	

**KD-Validated Anti-Plexin A1 Rabbit Monoclonal Antibody - Protein Information****Name** PLXNA1 ([HGNC:9099](#))**Synonyms** NOV, PLXN1**Function**

Coreceptor for SEMA3A, SEMA3C, SEMA3F and SEMA6D. Necessary for signaling by class 3 semaphorins and subsequent remodeling of the cytoskeleton. Plays a role in axon guidance, invasive growth and cell migration. Class 3 semaphorins bind to a complex composed of a neuropilin and a plexin. The plexin modulates the affinity of the complex for specific semaphorins, and its cytoplasmic domain is required for the activation of down-stream signaling events in the cytoplasm. Acts as coreceptor of TREM2 for SEMA6D in dendritic cells and is involved in the generation of immune responses and skeletal homeostasis.

**Cellular Location**

Cell membrane {ECO:0000250|UniProtKB:P70206}; Single-pass type I membrane protein

**Tissue Location**

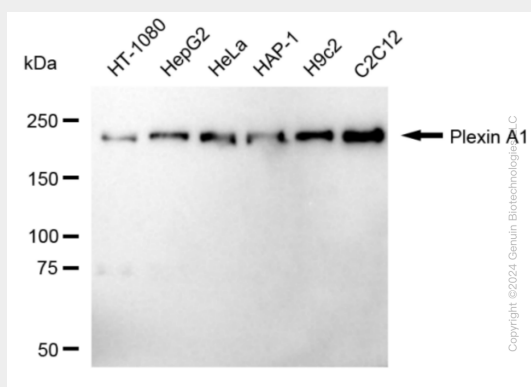
Detected in fetal brain, lung, liver and kidney.

## KD-Validated Anti-Plexin A1 Rabbit Monoclonal Antibody - Protocols

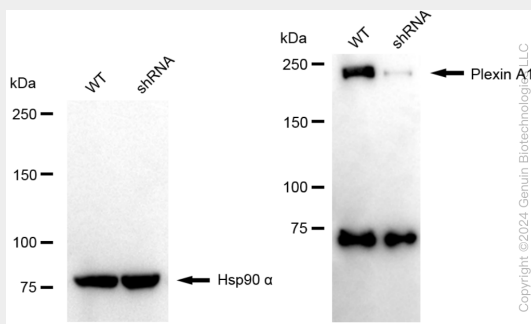
Provided below are standard protocols that you may find useful for product applications.

- [Western Blot](#)
- [Blocking Peptides](#)
- [Dot Blot](#)
- [Immunohistochemistry](#)
- [Immunofluorescence](#)
- [Immunoprecipitation](#)
- [Flow Cytometry](#)
- [Cell Culture](#)

## KD-Validated Anti-Plexin A1 Rabbit Monoclonal Antibody - Images



Western blotting analysis using anti-Plexin A1 antibody (Cat#AGI1665). Total cell lysates (30 µg) from various cell lines were loaded and separated by SDS-PAGE. The blot was incubated with anti-Plexin A1 antibody (Cat#AGI1665, 1:5,000) and HRP-conjugated goat anti-rabbit secondary antibody respectively.



Western blotting analysis using anti-plexin A1 antibody (Cat#AGI1665). Plexin A1 expression in wild-type (WT) and plexin A1 (PLXNA1) shRNA knockdown (KD) HT-1080 cells with 30 µg of total cell lysates. Hsp90 α serves as a loading control. The blot was incubated with anti-Plexin A1 antibody (Cat#AGI1665, 1:5,000) and HRP-conjugated goat anti-rabbit secondary antibody respectively.