

KD-Validated Anti-PRKAR2A Rabbit Monoclonal Antibody
Rabbit monoclonal antibody
Catalog # AGI1668**Specification**

KD-Validated Anti-PRKAR2A Rabbit Monoclonal Antibody - Product Information

Application	WB, FC
Primary Accession	P13861
Reactivity	Human
Clonality	Monoclonal
Isotype	Rabbit IgG
Calculated MW	Predicted, 46 kDa , observed , 52 kDa KDa
Gene Name	PRKAR2A
Aliases	Protein Kinase CAMP-Dependent Type II Regulatory Subunit Alpha; PRKAR2; Protein Kinase, CAMP-Dependent, Regulatory Subunit Type II Alpha; CAMP-Dependent Protein Kinase Type II-Alpha Regulatory Subunit; PKR2; Protein Kinase, CAMP-Dependent, Regulatory, Type II, Alpha; CAMP-Dependent Protein Kinase Regulatory Subunit RII Alpha; Protein Kinase A, RII-Alpha Subunit
Immunogen	A synthesized peptide derived from human PKA R2

KD-Validated Anti-PRKAR2A Rabbit Monoclonal Antibody - Additional Information

Gene ID	5576
Other Names	
cAMP-dependent protein kinase type II-alpha regulatory subunit, PRKAR2A, PKR2, PRKAR2	

KD-Validated Anti-PRKAR2A Rabbit Monoclonal Antibody - Protein Information**Name** PRKAR2A**Synonyms** PKR2, PRKAR2**Function**

Regulatory subunit of the cAMP-dependent protein kinases involved in cAMP signaling in cells. Type II regulatory chains mediate membrane association by binding to anchoring proteins, including the MAP2 kinase.

Cellular Location

Cytoplasm. Cell membrane. Note=Colocalizes with PJA2 in the cytoplasm and the cell membrane

Tissue Location

Four types of regulatory chains are found: I-alpha, I-beta, II-alpha, and II-beta. Their expression

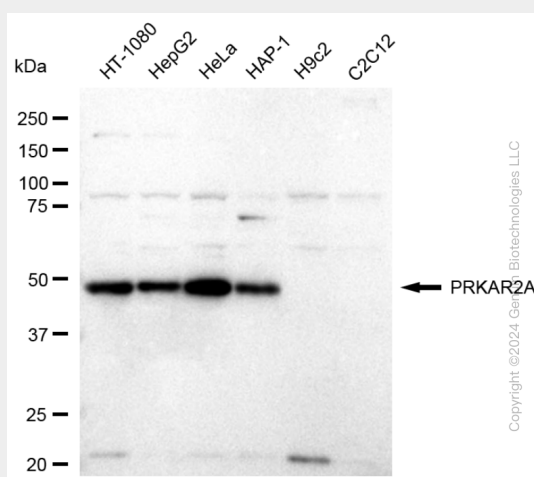
varies among tissues and is in some cases constitutive and in others inducible

KD-Validated Anti-PRKAR2A Rabbit Monoclonal Antibody - Protocols

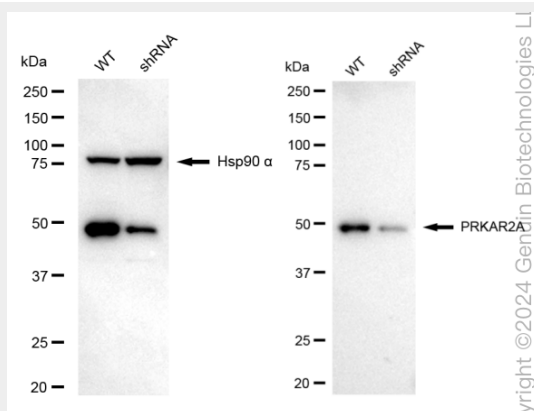
Provided below are standard protocols that you may find useful for product applications.

- [Western Blot](#)
- [Blocking Peptides](#)
- [Dot Blot](#)
- [Immunohistochemistry](#)
- [Immunofluorescence](#)
- [Immunoprecipitation](#)
- [Flow Cytometry](#)
- [Cell Culture](#)

KD-Validated Anti-PRKAR2A Rabbit Monoclonal Antibody - Images

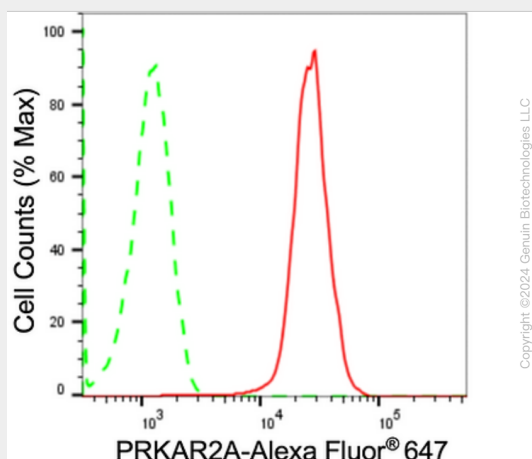


Western blotting analysis using anti-PRKAR2A antibody (Cat#AGI1668). Total cell lysates (30 µg) from various cell lines were loaded and separated by SDS-PAGE. The blot was incubated with anti-PRKAR2A antibody (Cat#AGI1668, 1:5,000) and HRP-conjugated goat anti-rabbit secondary antibody respectively.



Western blotting analysis using anti-PRKAR2A antibody (Cat#AGI1668). PRKAR2A expression in wild-type (WT) and PRKAR2A shRNA knockdown (KD) HeLa cells with 20 µg of total cell lysates. Hsp90 α serves as a loading control. The blot was incubated with anti-PRKAR2A antibody

(Cat#AGI1668, 1:5,000) and HRP-conjugated goat anti-rabbit secondary antibody respectively.



Flow cytometric analysis of PRKAR2A expression in HAP-1 cells using anti-PRKAR2A antibody (Cat#AGI1668, 1:2,000). Green, isotype control; red, PRKAR2A.