

KD-Validated Anti-NHERF1 Rabbit Monoclonal Antibody
Rabbit monoclonal antibody
Catalog # AGI1669

Specification

KD-Validated Anti-NHERF1 Rabbit Monoclonal Antibody - Product Information

Application	WB, FC
Primary Accession	O14745
Reactivity	Rat, Human
Clonality	Monoclonal
Isotype	Rabbit IgG
Calculated MW	Predicted, 39 kDa , o bserved , 50 kDa KDa
Gene Name	NHERF1
Aliases	NHERF1; NHERF Family PDZ Scaffold Protein 1; NHERF-1; NHERF; EBP50; SLC9A3R1; NHE-RF; Solute Carrier Family 9, Subfamily A (NHE3, Cation Proton Antiporter 3), Member 3 Regulator 1; Na(+)/H(+) Exchange Regulatory Cofactor NHE-RF1; Ezrin-Radixin-Moesin-Binding Phosphoprotein 50; Regulatory Cofactor Of Na(+)/H(+) Exchanger; Na(+)/H(+) Exchange Regulatory Cofactor 1; SLC9A3 Regulator 1; Solute Carrier Family 9 (Sodium/Hydrogen Exchanger), Isoform 3 Regulator Factor 1; Solute Carrier Family 9 (Sodium/Hydrogen Exchanger), Isoform 3 Regulator 1; Solute Carrier Family 9 (Sodium/Hydrogen Exchanger), Member 3 Regulator 1; Solute Carrier Family 9 Isoform A3 Regulator Factor 1; Ezrin-Radixin-Moesin Binding Phosphoprotein-50; Sodium-Hydrogen Exchanger Regulatory Factor 1; Na+/H+ Exchange Regulatory Co-Factor; NPHLOP2 A synthesized peptide derived from human EBP50
Immunogen	

KD-Validated Anti-NHERF1 Rabbit Monoclonal Antibody - Additional Information

Gene ID	9368
Other Names	Na(+)/H(+) exchange regulatory cofactor NHE-RF1, NHERF-1, Ezrin-radixin-moesin-binding phosphoprotein 50, EBP50, Regulatory cofactor of Na(+)/H(+) exchanger, Sodium-hydrogen exchanger regulatory factor 1, Solute carrier family 9 isoform A3 regulatory factor 1, NHERF1 (http://www.genenames.org/cgi-bin/gene_symbol_report?hgnc_id=11075) target="_blank">HGNC:11075), NHERF, SLC9A3R1

KD-Validated Anti-NHERF1 Rabbit Monoclonal Antibody - Protein Information

Name NHERF1 ([HGNC:11075](#))

Synonyms NHERF, SLC9A3R1

Function

Scaffold protein that connects plasma membrane proteins with members of the ezrin/moesin/radixin family and thereby helps to link them to the actin cytoskeleton and to regulate their surface expression. Necessary for recycling of internalized ADRB2. Was first known to play a role in the regulation of the activity and subcellular location of SLC9A3. Necessary for cAMP-mediated phosphorylation and inhibition of SLC9A3. May enhance Wnt signaling. May participate in HTR4 targeting to microvilli (By similarity). Involved in the regulation of phosphate reabsorption in the renal proximal tubules. Involved in sperm capacitation. May participate in the regulation of the chloride and bicarbonate homeostasis in spermatozoa.

Cellular Location

Cytoplasm. Apical cell membrane. Endomembrane system; Peripheral membrane protein. Cell projection, filopodium. Cell projection, ruffle. Cell projection, microvillus. Note=Translocates from the cytoplasm to the apical cell membrane in a PODXL-dependent manner. Colocalizes with CFTR at the midpiece of sperm tail (By similarity). Colocalizes with actin in microvilli-rich apical regions of the syncytiotrophoblast. Found in microvilli, ruffling membrane and filopodia of HeLa cells. Present in lipid rafts of T-cells.

Tissue Location

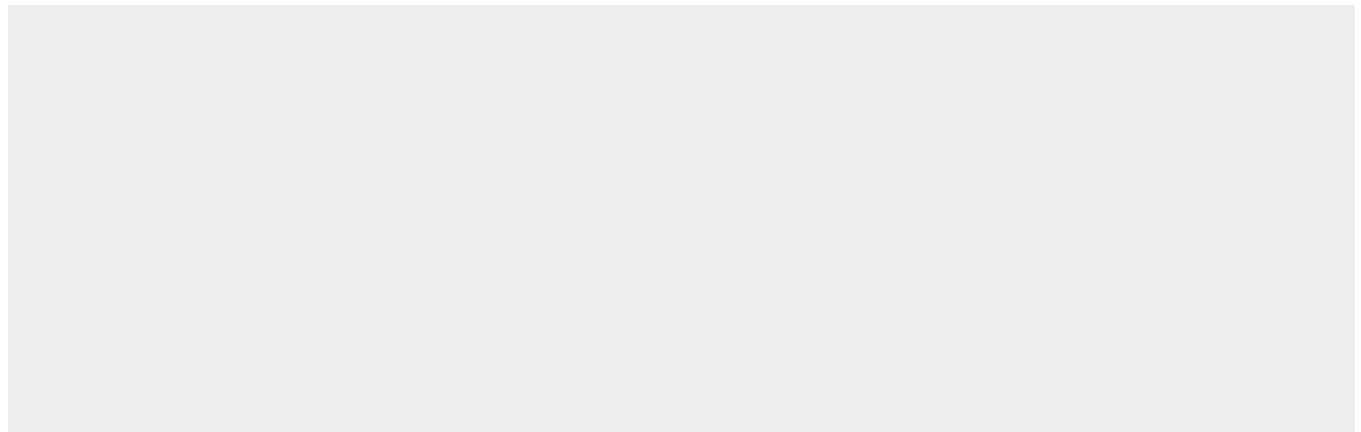
Detected in liver, kidney, pancreas, prostate, spleen, small intestine and placenta, in particular in the syncytiotrophoblast.

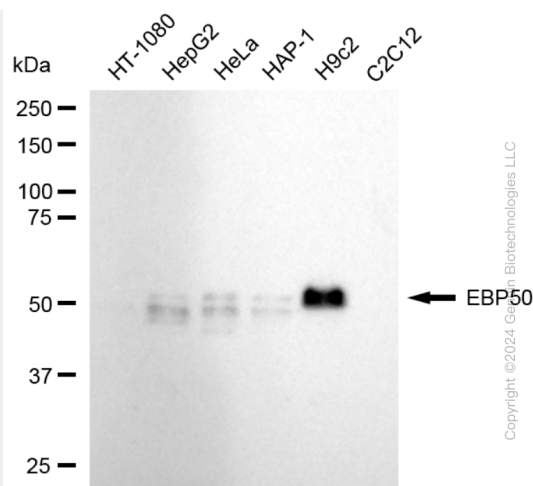
KD-Validated Anti-NHERF1 Rabbit Monoclonal Antibody - Protocols

Provided below are standard protocols that you may find useful for product applications.

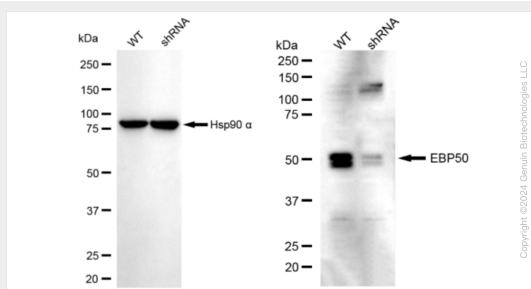
- [Western Blot](#)
- [Blocking Peptides](#)
- [Dot Blot](#)
- [Immunohistochemistry](#)
- [Immunofluorescence](#)
- [Immunoprecipitation](#)
- [Flow Cytometry](#)
- [Cell Culture](#)

KD-Validated Anti-NHERF1 Rabbit Monoclonal Antibody - Images

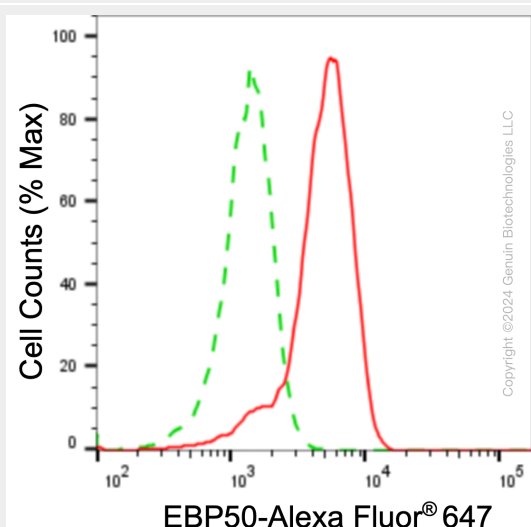




Western blotting analysis using anti-NHERF Family PDZ Scaffold Protein 1 antibody (Cat#62529). Total cell lysates (30 µg) from various cell lines were loaded and separated by SDS-PAGE. The blot was incubated with anti-NHERF Family PDZ Scaffold Protein 1 antibody (Cat#62529, 1:5,000) and HRP-conjugated goat anti-rabbit secondary antibody (Cat#201, 1:20,000) respectively. Image was developed using NaQ™ ECL Substrate Kit (Cat#716).



Western blotting analysis using anti-EBP50 antibody (Cat#62529). EBP50 expression in wild-type (WT) and NHERF1 shRNA knockdown (KD) HeLa cells with 20 µg of total cell lysates. Hsp90 α serves as a loading control. The blot was incubated with anti-EBP50 antibody (Cat#62529, 1:5,000) and HRP-conjugated goat anti-rabbit secondary antibody (Cat#201, 1:20,000) respectively. Image was developed using NaQ™ ECL Substrate Kit (Cat#716).



Flow cytometric analysis of EBP50 expression in H9c2 cells using anti-EBP50 antibody (Cat #62529, 1:2,000). Green, isotype control; red, EBP50.