

KD-Validated Anti-PDZ And LIM Domain 1 Rabbit Monoclonal Antibody
Rabbit monoclonal antibody
Catalog # AGI1672**Specification****KD-Validated Anti-PDZ And LIM Domain 1 Rabbit Monoclonal Antibody - Product Information**

Application	WB, FC
Primary Accession	O00151
Reactivity	Rat, Human, Mouse
Clonality	Monoclonal
Isotype	Rabbit IgG
Calculated MW	Predicted, 36 kDa ; Observed, 36 kDa KDa
Gene Name	PDLIM1
Aliases	PDLIM1; PDZ And LIM Domain 1; CLP36; CLP-36; HCLIM1; Elfin; CLIM1; Carboxyl Terminal LIM Domain Protein 1; PDZ And LIM Domain Protein 1; LIM Domain Protein CLP-36; Epididymis Secretory Protein Li 112; C-Terminal LIM Domain Protein 1; PDZ And LIM Domain 1 (Elfin); HEL-S-112
Immunogen	A synthesized peptide derived from human PDLIM1

KD-Validated Anti-PDZ And LIM Domain 1 Rabbit Monoclonal Antibody - Additional Information

Gene ID	9124
Other Names	
PDZ and LIM domain protein 1, C-terminal LIM domain protein 1, Elfin, LIM domain protein CLP-36, PDLIM1, CLIM1, CLP36	

KD-Validated Anti-PDZ And LIM Domain 1 Rabbit Monoclonal Antibody - Protein Information**Name** PDLIM1**Synonyms** CLIM1, CLP36**Function**

Cytoskeletal protein that may act as an adapter that brings other proteins (like kinases) to the cytoskeleton (PubMed: <http://www.uniprot.org/citations/10861853> target="_blank">10861853). Involved in assembly, disassembly and directioning of stress fibers in fibroblasts. Required for the localization of ACTN1 and PALLD to stress fibers. Required for cell migration and in maintaining cell polarity of fibroblasts (By similarity).

Cellular Location

Cytoplasm. Cytoplasm, cytoskeleton. Cytoplasm, myofibril, sarcomere, Z line Note=Associates

with actin stress fibers

Tissue Location

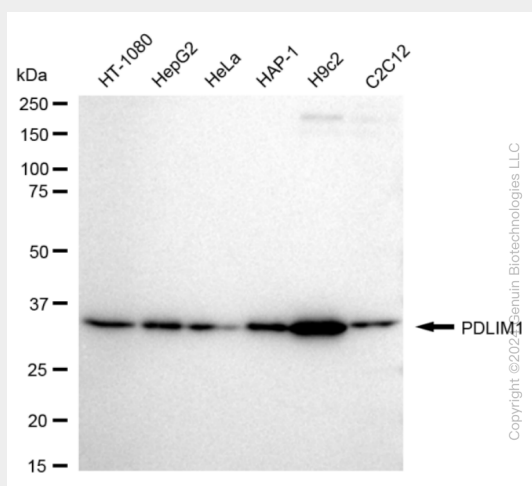
Strongly expressed in the heart and skeletal muscle, moderately expressed in the spleen, small intestine, colon, placenta, and lung. A lower level expression is seen in liver, thymus, kidney, prostate and pancreas and is not found in the brain, testis, ovary, and peripheral blood leukocytes

KD-Validated Anti-PDZ And LIM Domain 1 Rabbit Monoclonal Antibody - Protocols

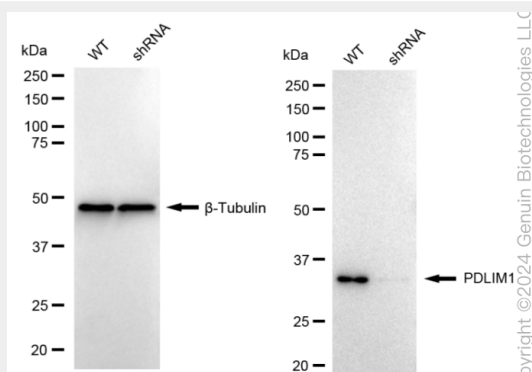
Provided below are standard protocols that you may find useful for product applications.

- [Western Blot](#)
- [Blocking Peptides](#)
- [Dot Blot](#)
- [Immunohistochemistry](#)
- [Immunofluorescence](#)
- [Immunoprecipitation](#)
- [Flow Cytometry](#)
- [Cell Culture](#)

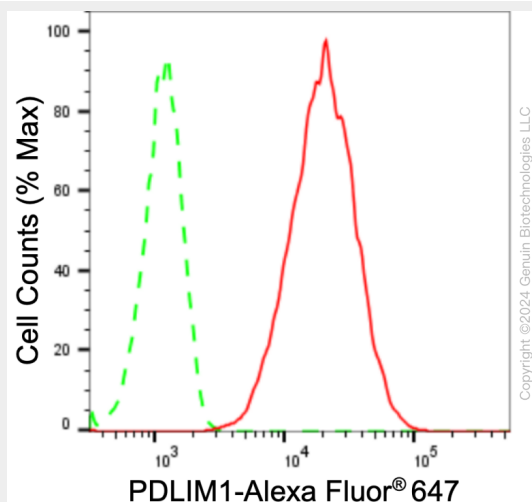
KD-Validated Anti-PDZ And LIM Domain 1 Rabbit Monoclonal Antibody - Images



Western blotting analysis using anti-PDLIM1 antibody (Cat#AGI1672). Total cell lysates (30 µg) from various cell lines were loaded and separated by SDS-PAGE. The blot was incubated with anti-PDLIM1 antibody (Cat#AGI1672, 1:5,000) and HRP-conjugated goat anti-rabbit secondary antibody respectively.



Western blotting analysis using anti-PDLIM1 antibody (Cat#AGI1672). PDLIM1 expression in wild type (WT) and PDLIM1 shRNA knockdown (KD) HeLa cells with 20 μ g of total cell lysates. β -Tubulin serves as a loading control. The blot was incubated with anti-PDLIM1 antibody (Cat#AGI1672, 1:5,000) and HRP-conjugated goat anti-rabbit secondary antibody respectively.



Flow cytometric analysis of PDLIM1 expression in HepG2 cells using anti-PDLIM1 antibody (Cat#AGI1672, 1:2,000). Green, isotype control; red, PDLIM1.