

KD-Validated Anti-PRKCSH Rabbit Monoclonal Antibody
Rabbit monoclonal antibody
Catalog # AGI1673

Specification

KD-Validated Anti-PRKCSH Rabbit Monoclonal Antibody - Product Information

Application	WB, FC
Primary Accession	P14314
Reactivity	Human
Clonality	Monoclonal
Isotype	Rabbit IgG
Calculated MW	Predicted, 59 kDa ; Observed, 80 kDa KDa
Gene Name	PRKCSH
Aliases	PRKCSH; Protein Kinase C Substrate 80K-H; Glucosidase 2 Subunit Beta; VASAP-60; PKCSH; G19P1; GIIB; Protein Kinase C Substrate 60.1 KDa Protein Heavy Chain; Advanced Glycation End-Product Receptor 2; Glucosidase II Subunit Beta; Hepatocystin; GluIIbeta; GIIBeta; AGE-R2; 80K-H; PCLD; PLD1; Protein Kinase C Substrate, 80 Kda Protein; Glucosidase II Beta Subuni; Polycystic Liver Disease; AGE-Binding Receptor 2; 80K-H Protein; PCLD1
Immunogen	A synthesized peptide derived from human GLU2B

KD-Validated Anti-PRKCSH Rabbit Monoclonal Antibody - Additional Information

Gene ID	5589
Other Names	Glucosidase 2 subunit beta, 80K-H protein, Glucosidase II subunit beta, Protein kinase C substrate 60.1 kDa protein heavy chain, PKCSH, PRKCSH {ECO:0000303 PubMed:28375157, ECO:0000312 HGNC:HGNC:9411}

KD-Validated Anti-PRKCSH Rabbit Monoclonal Antibody - Protein Information

Name PRKCSH {ECO:0000303|PubMed:28375157, ECO:0000312|HGNC:HGNC:9411}

Function

Regulatory subunit of glucosidase II that cleaves sequentially the 2 innermost alpha-1,3-linked glucose residues from the Glc(2)Man(9)GlcNAc(2) oligosaccharide precursor of immature glycoproteins (PubMed:10929008). Required for efficient PKD1/Polycystin-1 biogenesis and trafficking to the plasma membrane of the primary cilia (By similarity).

Cellular Location

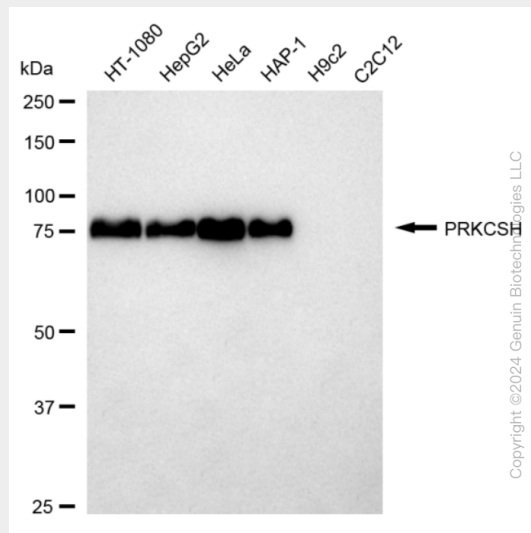
Endoplasmic reticulum {ECO:0000255|PROSITE- ProRule:PRU10138, ECO:0000305|PubMed:10929008}

KD-Validated Anti-PRKCSH Rabbit Monoclonal Antibody - Protocols

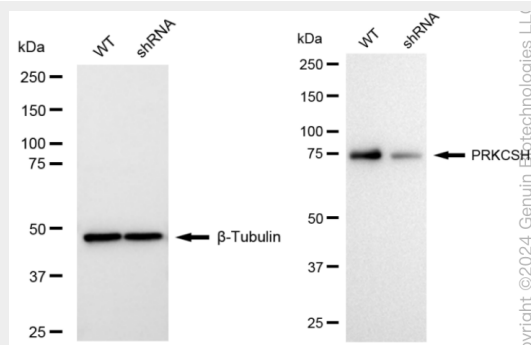
Provided below are standard protocols that you may find useful for product applications.

- [Western Blot](#)
- [Blocking Peptides](#)
- [Dot Blot](#)
- [Immunohistochemistry](#)
- [Immunofluorescence](#)
- [Immunoprecipitation](#)
- [Flow Cytometry](#)
- [Cell Culture](#)

KD-Validated Anti-PRKCSH Rabbit Monoclonal Antibody - Images

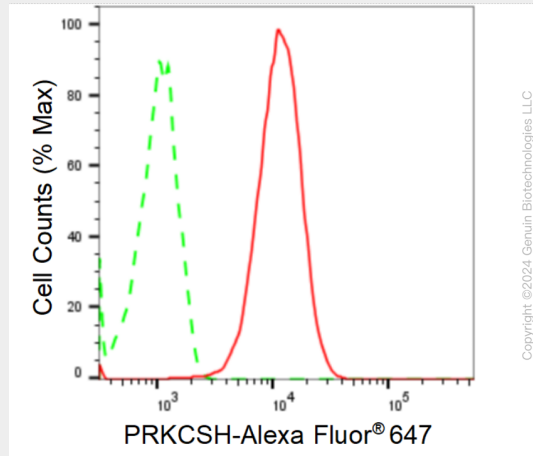


Western blotting analysis using anti-PRKCSH antibody (Cat#62541). Total cell lysates (30 µg) from various cell lines were loaded and separated by SDS-PAGE. The blot was incubated with anti-PRKCSH antibody (Cat#62541, 1:5,000) and HRP-conjugated goat anti-rabbit secondary antibody (Cat#201, 1:20,000) respectively. Image was developed using FeQ™ ECL Substrate Kit (Cat#226).



Western blotting analysis using anti-PRKCSH antibody (Cat#62541). PRKCSH expression in wild type (WT) and PRKCSH shRNA knockdown (KD) HeLa cells with 20 µg of total cell lysates.

β -Tubulin serves as a loading control. The blot was incubated with anti-PRKCSH antibody (Cat#62541, 1:5,000) and HRP-conjugated goat anti-rabbit secondary antibody (Cat#201, 1:20,000) respectively. Image was developed using NaQ™ ECL Substrate Kit (Cat#716).



Flow cytometric analysis of PRKCSH expression in HeLa cells using anti-PRKCSH antibody (Cat#62541, 1:2,000). Green, isotype control; red, PRKCSH.