

KD-Validated Anti-Inorganic Pyrophosphatase 1 Rabbit Monoclonal Antibody
Rabbit monoclonal antibody
Catalog # AGI1676**Specification**

KD-Validated Anti-Inorganic Pyrophosphatase 1 Rabbit Monoclonal Antibody - Product Information

Application	WB, FC
Primary Accession	Q15181
Reactivity	Rat, Human, Mouse
Clonality	Monoclonal
Isotype	Rabbit IgG
Calculated MW	Predicted, 33 kDa , observed, 33 kDa KDa
Gene Name	PPA1
Aliases	PPA1; Inorganic Pyrophosphatase 1; Pyrophosphate Phospho-Hydrolase; SID6-8061; Ppase; PP1; PP; Cytosolic Inorganic Pyrophosphatase; Pyrophosphatase (Inorganic)1; Inorganic Diphosphatase 1; Inorganic Pyrophosphatase; EC 3.6.1.1; Epididymis Secretory Sperm Binding Protein Li 66p; Diphosphate Phosphohydrolase; Pyrophosphatase (Inorganic); Pyrophosphatase 1; HEL-S-66p; PPase
Immunogen	A synthesized peptide derived from human Pyrophosphatase 1

KD-Validated Anti-Inorganic Pyrophosphatase 1 Rabbit Monoclonal Antibody - Additional Information

Gene ID	5464
Other Names	
Inorganic pyrophosphatase, 3.6.1.1, Pyrophosphate phospho-hydrolase, PPase, PPA1, IOPPP, PP	

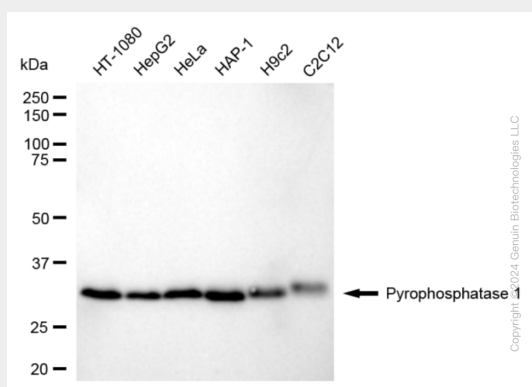
KD-Validated Anti-Inorganic Pyrophosphatase 1 Rabbit Monoclonal Antibody - Protein Information**Name** PPA1**Synonyms** IOPPP, PP**Cellular Location**
Cytoplasm.**Tissue Location**
Expressed ubiquitously.

KD-Validated Anti-Inorganic Pyrophosphatase 1 Rabbit Monoclonal Antibody - Protocols

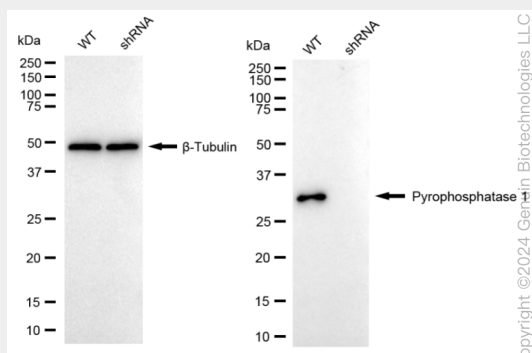
Provided below are standard protocols that you may find useful for product applications.

- [Western Blot](#)
- [Blocking Peptides](#)
- [Dot Blot](#)
- [Immunohistochemistry](#)
- [Immunofluorescence](#)
- [Immunoprecipitation](#)
- [Flow Cytometry](#)
- [Cell Culture](#)

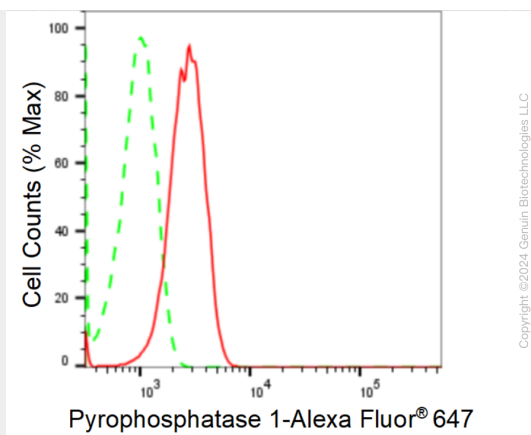
KD-Validated Anti-Inorganic Pyrophosphatase 1 Rabbit Monoclonal Antibody - Images



Western blotting analysis using anti-Pyrophosphatase 1 antibody (Cat#AGI1676). Total cell lysates (30 µg) from various cell lines were loaded and separated by SDS-PAGE. The blot was incubated with anti-Pyrophosphatase 1 antibody (Cat#AGI1676, 1:5,000) and HRP-conjugated goat anti-rabbit secondary antibody respectively.



Western blotting analysis using anti-Pyrophosphatase 1 antibody (Cat#AGI1676). Pyrophosphatase 1 expression in wild type (WT) and Pyrophosphatase 1 shRNA knockdown (KD) HeLa cells with 20 µg of total cell lysates. β-Tubulin serves as a loading control. The blot was incubated with anti-Pyrophosphatase 1 antibody (Cat#AGI1676, 1:5,000) and HRP-conjugated goat anti-rabbit secondary antibody respectively.



Flow cytometric analysis of Pyrophosphatase 1 expression in HT-1080 cells using anti-Pyrophosphatase 1 antibody (Cat#AGI1676, 1:2,000). Green, isotype control; red, Pyrophosphatase 1.