

**KD-Validated Anti-TAF15 Rabbit Monoclonal Antibody**  
**Rabbit monoclonal antibody**  
**Catalog # AGI1701****Specification****KD-Validated Anti-TAF15 Rabbit Monoclonal Antibody - Product Information**

Application	WB, FC, ICC
Primary Accession	<a href="#">O92804</a>
Reactivity	Rat, Human, Mouse
Clonality	Monoclonal
Isotype	Rabbit IgG
Calculated MW	Predicted, 62 kDa , observed , 62 kDa KDa
Gene Name	TAF15
Aliases	TAF15; TATA-Box Binding Protein Associated Factor 15; RBP56; TAF2N; Npl3; TATA Box Binding Protein (TBP)-Associated Factor, RNA Polymerase II, N, 68kD (RNA-Binding Protein 56); TAF15 RNA Polymerase II, TATA Box Binding Protein (TBP)-Associated Factor, 68kDa; TATA-Binding Protein-Associated Factor 2N; HTAFII68; TAFII68; TATA Box-Binding Protein-Associated Factor 2N (RNA-Binding Protein 56); 68 KDa TATA-Binding Protein-Associated Factor; TBP-Associated Factor 15; RNA-Binding Protein 56; RBP56/CSMF Fusion; TAF(II)68
Immunogen	A synthesized peptide derived from human TAF15

**KD-Validated Anti-TAF15 Rabbit Monoclonal Antibody - Additional Information**

Gene ID	8148
<b>Other Names</b>	TATA-binding protein-associated factor 2N, 68 kDa TATA-binding protein-associated factor, TAF(II)68, TAFII68, RNA-binding protein 56, TAF15, RBP56, TAF2N

**KD-Validated Anti-TAF15 Rabbit Monoclonal Antibody - Protein Information****Name** TAF15**Synonyms** RBP56, TAF2N**Function**

RNA and ssDNA-binding protein that may play specific roles during transcription initiation at distinct promoters. Binds to ssRNA containing the consensus sequence 5'-AGGUAA-3' (PubMed:<a href="http://www.uniprot.org/citations/21256132" target="\_blank">21256132</a>). Can enter the preinitiation complex together with the RNA polymerase II (Pol II).

### Cellular Location

Nucleus. Cytoplasm. Note=Shuttles from the nucleus to the cytoplasm

### Tissue Location

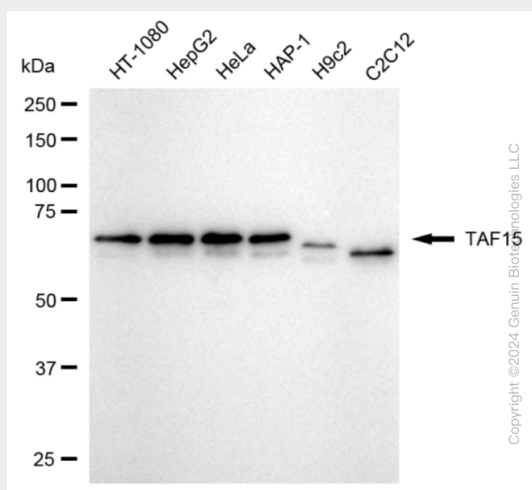
Ubiquitous. Observed in all fetal and adult tissues

## KD-Validated Anti-TAF15 Rabbit Monoclonal Antibody - Protocols

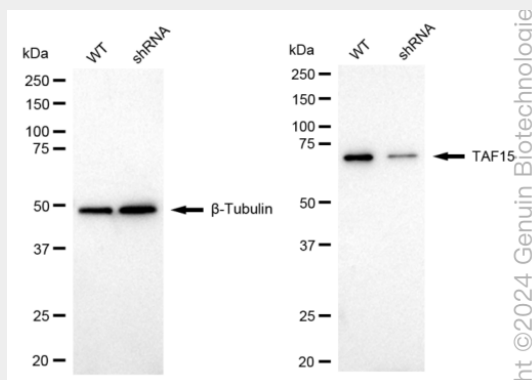
Provided below are standard protocols that you may find useful for product applications.

- [Western Blot](#)
- [Blocking Peptides](#)
- [Dot Blot](#)
- [Immunohistochemistry](#)
- [Immunofluorescence](#)
- [Immunoprecipitation](#)
- [Flow Cytometry](#)
- [Cell Culture](#)

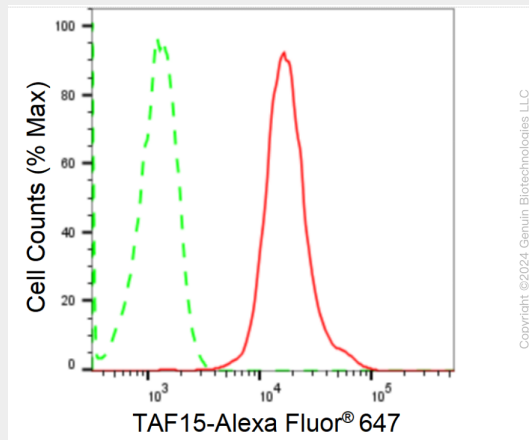
## KD-Validated Anti-TAF15 Rabbit Monoclonal Antibody - Images



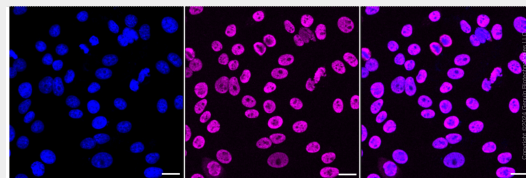
Western blotting analysis using anti-TAF15 antibody (Cat#AGI1701). Total cell lysates (30 µg) from various cell lines were loaded and separated by SDS-PAGE. The blot was incubated with anti-TAF15 antibody (Cat#AGI1701, 1:5,000) and HRP-conjugated goat anti-rabbit secondary antibody respectively.



Western blotting analysis using anti-TAF15 antibody (Cat#AGI1701). TAF15 expression in wild type (WT) and TAF15 shRNA knockdown (KD) HeLa cells with 20  $\mu$ g of total cell lysates.  $\beta$ -Tubulin serves as a loading control. The blot was incubated with anti-TAF15 antibody (Cat#AGI1701, 1:5,000) and HRP-conjugated goat anti-rabbit secondary antibody respectively.



Flow cytometric analysis of TAF15 expression in HepG2 cells using anti-TAF15 antibody (Cat#AGI1701, 1:2,000). Green, isotype control; red, TAF15.



Immunocytochemical staining of HepG2 cells with anti-TAF15 antibody (Cat#AGI1701, 1:1,000). Nuclei were stained blue with DAPI; TAF15 was stained magenta with Alexa Fluor® 647. Images were taken using Leica stellaris 5. Protein abundance based on laser Intensity and smart gain: High. Scale bar: 20  $\mu$ m.