

KD-Validated Anti-TOE1 Rabbit Monoclonal Antibody
Rabbit monoclonal antibody
Catalog # AGI1702**Specification**

KD-Validated Anti-TOE1 Rabbit Monoclonal Antibody - Product Information

Application	WB, FC
Primary Accession	Q96GM8
Reactivity	Rat, Human, Mouse
Clonality	Monoclonal
Isotype	Rabbit IgG
Calculated MW	Predicted, 57 kDa , observed , 60 kDa KDa
Gene Name	TOE1
Aliases	TOE1; Target Of EGR1, Exonuclease; HCaf1z; TOE-1; Target Of EGR1, Member 1 (Nuclear); Target Of EGR1 Protein 1; PCH7 A synthesized peptide derived from human TOE1
Immunogen	

KD-Validated Anti-TOE1 Rabbit Monoclonal Antibody - Additional Information

Gene ID	114034
Other Names	
Target of EGR1 protein 1, TOE1	

KD-Validated Anti-TOE1 Rabbit Monoclonal Antibody - Protein Information**Name** TOE1**Function**

Inhibits cell growth rate and cell cycle. Induces CDKN1A expression as well as TGF-beta expression. Mediates the inhibitory growth effect of EGR1. Involved in the maturation of snRNAs and snRNA 3'-tail processing (PubMed:28092684).

Cellular Location

Nucleus, nucleolus. Nucleus speckle. Note=Localizes to nuclear speckles

Tissue Location

Widely expressed..

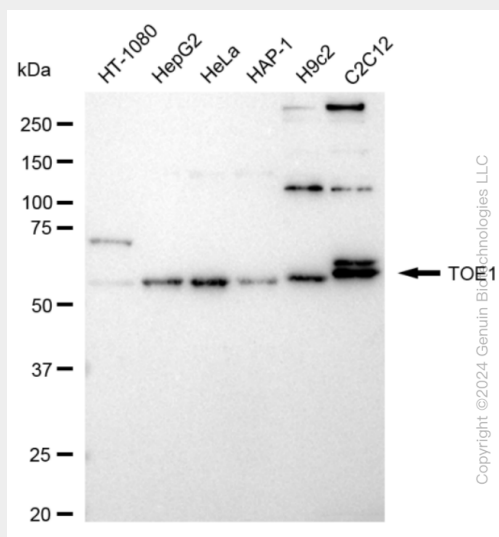
KD-Validated Anti-TOE1 Rabbit Monoclonal Antibody - Protocols

Provided below are standard protocols that you may find useful for product applications.

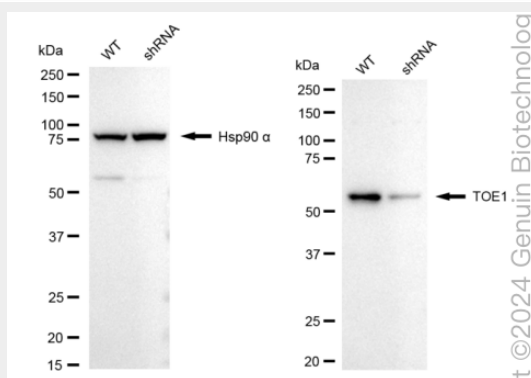
- [Western Blot](#)

- [Blocking Peptides](#)
- [Dot Blot](#)
- [Immunohistochemistry](#)
- [Immunofluorescence](#)
- [Immunoprecipitation](#)
- [Flow Cytometry](#)
- [Cell Culture](#)

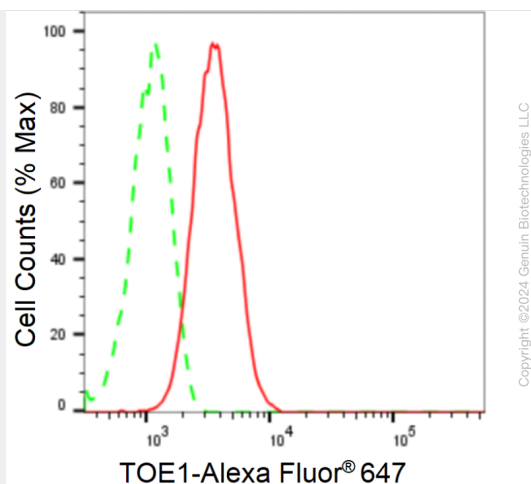
KD-Validated Anti-TOE1 Rabbit Monoclonal Antibody - Images



Western blotting analysis using anti-TOE1 antibody (Cat#AGI1702). Total cell lysates (30 µg) from various cell lines were loaded and separated by SDS-PAGE. The blot was incubated with anti-TOE1 antibody (Cat#AGI1702, 1:5,000) and HRP-conjugated goat anti-rabbit secondary antibody respectively.



Western blotting analysis using anti-TOE1 antibody (Cat#AGI1702). TOE1 expression in wild type (WT) and TOE1 shRNA knockdown (KD) HeLa cells with 20 µg of total cell lysates. Hsp90 α serves as a loading control. The blot was incubated with anti-TOE1 antibody (Cat#AGI1702, 1:5,000) and HRP-conjugated goat anti-rabbit secondary antibody respectively.



Flow cytometric analysis of TOE1 expression in C2C12 cells using anti-TOE1 antibody (Cat#AGI1702, 1:2,000). Green, isotype control; red, TOE1.