

KD-Validated Anti-Topoisomerase II alpha Rabbit Monoclonal Antibody
Rabbit monoclonal antibody
Catalog # AGI1704**Specification****KD-Validated Anti-Topoisomerase II alpha Rabbit Monoclonal Antibody - Product Information**

Application	WB, FC, ICC
Primary Accession	P11388
Reactivity	Rat, Human, Mouse
Clonality	Monoclonal
Isotype	Rabbit IgG
Calculated MW	Predicted, 174 kDa , observed , 174 kDa KDa
Gene Name	TOP2A
Aliases	TOP2A; DNA Topoisomerase II Alpha 2; TOP2alpha; TOP2A; TOP2; Topoisomerase (DNA) II Alpha 170kDa; DNA Topoisomerase II, Alpha Isozyme; DNA Topoisomerase 2-Alpha; DNA Topoisomerase (ATP-Hydrolyzing); DNA Topoisomerase II, 170 KD; EC 5.99.1.3; DNA Gyrase; EC 5.6.2.2; TP2A
Immunogen	A synthesized peptide derived from human Topoisomerase II alpha

KD-Validated Anti-Topoisomerase II alpha Rabbit Monoclonal Antibody - Additional Information

Gene ID	7153
Other Names	
DNA topoisomerase 2-alpha, 5.6.2.2 {ECO:0000255 PROSITE-ProRule:PRU00995, ECO:0000269 PubMed:19222228, ECO:0000269 PubMed:19697956}, DNA topoisomerase II, alpha isozyme, TOP2A, TOP2	

KD-Validated Anti-Topoisomerase II alpha Rabbit Monoclonal Antibody - Protein Information**Name** TOP2A**Synonyms** TOP2**Function**

Key decatenating enzyme that alters DNA topology by binding to two double-stranded DNA molecules, generating a double-stranded break in one of the strands, passing the intact strand through the broken strand, and religating the broken strand (PubMed:17567603, PubMed:18790802, PubMed:18790802)

href="http://www.uniprot.org/citations/22013166" target="_blank">22013166, PubMed:22323612). May play a role in regulating the period length of BMAL1 transcriptional oscillation (By similarity).

Cellular Location

Cytoplasm. Nucleus, nucleoplasm. Nucleus. Nucleus, nucleolus

Tissue Location

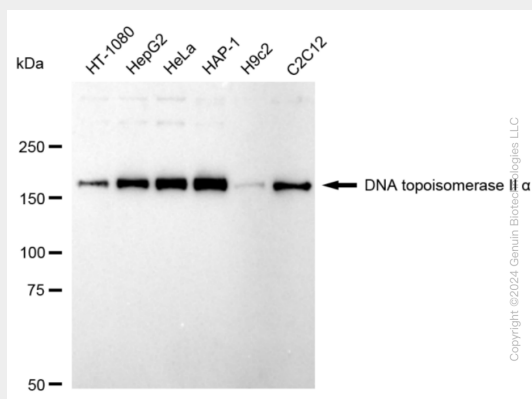
Expressed in the tonsil, spleen, lymph node, thymus, skin, pancreas, testis, colon, kidney, liver, brain and lung (PubMed:9155056). Also found in high-grade lymphomas, squamous cell lung tumors and seminomas (PubMed:9155056)

KD-Validated Anti-Topoisomerase II alpha Rabbit Monoclonal Antibody - Protocols

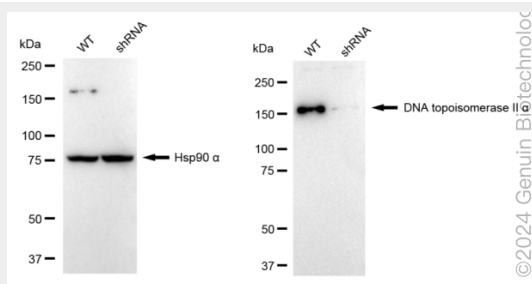
Provided below are standard protocols that you may find useful for product applications.

- [Western Blot](#)
- [Blocking Peptides](#)
- [Dot Blot](#)
- [Immunohistochemistry](#)
- [Immunofluorescence](#)
- [Immunoprecipitation](#)
- [Flow Cytometry](#)
- [Cell Culture](#)

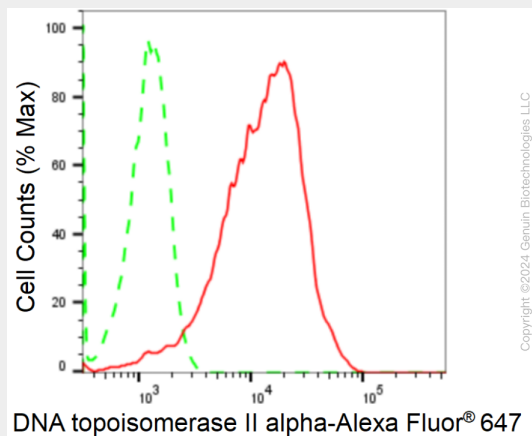
KD-Validated Anti-Topoisomerase II alpha Rabbit Monoclonal Antibody - Images



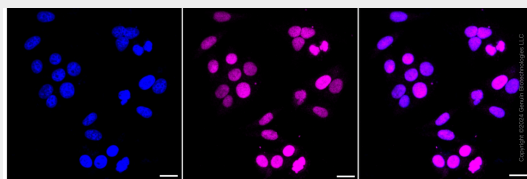
Western blotting analysis using anti-DNA topoisomerase II alpha antibody (Cat#AGI1704). Total cell lysates (30 µg) from various cell lines were loaded and separated by SDS-PAGE. The blot was incubated with anti-DNA topoisomerase II alpha antibody (Cat#AGI1704, 1:5,000) and HRP-conjugated goat anti-rabbit secondary antibody respectively.



Western blotting analysis using anti-DNA topoisomerase II alpha antibody (Cat#AGI1704). DNA topoisomerase II alpha expression in wild type (WT) and DNA topoisomerase II alpha shRNA knockdown (KD) HeLa cells with 20 µg of total cell lysates. Hsp90 α serves as a loading control. The blot was incubated with anti-DNA topoisomerase II alpha antibody (Cat#AGI1704, 1:5,000) and HRP-conjugated goat anti-rabbit secondary antibody respectively.



Flow cytometric analysis of DNA topoisomerase II alpha expression in HepG2 cells using anti-DNA topoisomerase II alpha antibody (Cat#AGI1704, 1:2,000). Green, isotype control; red, DNA topoisomerase II alpha.



Immunocytochemical staining of HepG2 cells with anti-DNA topoisomerase II alpha antibody (Cat#AGI1704, 1:1,000). Nuclei were stained blue with DAPI; DNA topoisomerase II alpha was stained magenta with Alexa Fluor® 647. Images were taken using Leica stellaris 5. Protein abundance based on laser Intensity and smart gain: Medium. Scale bar: 20 µm.