

KD-Validated Anti-Transcription Factor 7 Like 1 Rabbit Monoclonal Antibody
Rabbit monoclonal antibody
Catalog # AGI1706**Specification****KD-Validated Anti-Transcription Factor 7 Like 1 Rabbit Monoclonal Antibody - Product Information**

Application	WB, FC, ICC
Primary Accession	Q9HCS4
Reactivity	Rat, Human, Mouse
Clonality	Monoclonal
Isotype	Rabbit IgG
Calculated MW	Predicted, 63 kDa ; Observed , 63 kDa KDa
Gene Name	TCF7L1
Aliases	TCF7L1; Transcription Factor 7 Like 1; TCF3; Transcription Factor 7-Like 1 (T-Cell Specific, HMG-Box); HMG Box Transcription Factor 3; Transcription Factor 7-Like 1; TCF-3
Immunogen	A synthesized peptide derived from human TCF3

KD-Validated Anti-Transcription Factor 7 Like 1 Rabbit Monoclonal Antibody - Additional Information

Gene ID	83439
Other Names	
Transcription factor 7-like 1, HMG box transcription factor 3, TCF-3, TCF7L1, TCF3	

KD-Validated Anti-Transcription Factor 7 Like 1 Rabbit Monoclonal Antibody - Protein Information**Name** TCF7L1**Synonyms** TCF3**Function**

Participates in the Wnt signaling pathway. Binds to DNA and acts as a repressor in the absence of CTNNB1, and as an activator in its presence. Necessary for the terminal differentiation of epidermal cells, the formation of keratohyalin granules and the development of the barrier function of the epidermis (By similarity). Down-regulates NQO1, leading to increased mitomycin c resistance.

Cellular Location

Nucleus.

Tissue Location

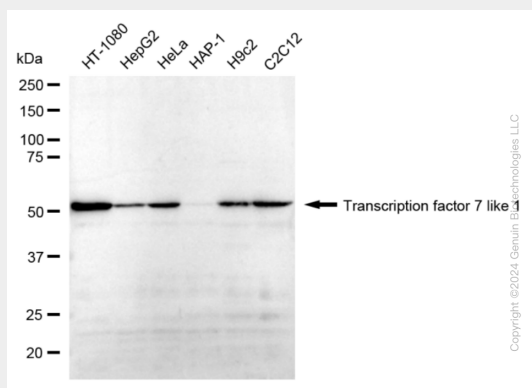
Detected in hair follicles and skin keratinocytes, and at lower levels in stomach epithelium

KD-Validated Anti-Transcription Factor 7 Like 1 Rabbit Monoclonal Antibody - Protocols

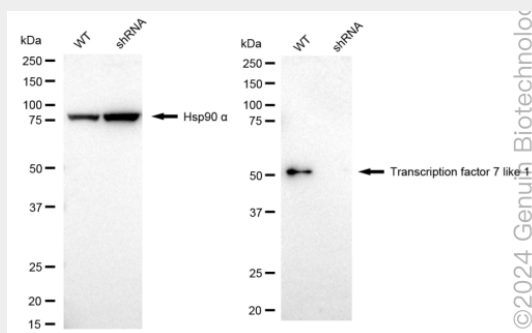
Provided below are standard protocols that you may find useful for product applications.

- [Western Blot](#)
- [Blocking Peptides](#)
- [Dot Blot](#)
- [Immunohistochemistry](#)
- [Immunofluorescence](#)
- [Immunoprecipitation](#)
- [Flow Cytometry](#)
- [Cell Culture](#)

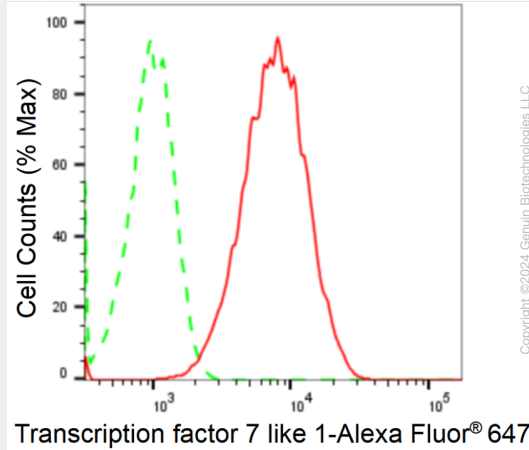
KD-Validated Anti-Transcription Factor 7 Like 1 Rabbit Monoclonal Antibody - Images



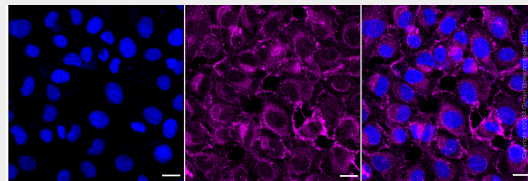
Western blotting analysis using anti-Transcription factor 7 like 1 antibody (Cat#AGI1706). Total cell lysates (30 µg) from various cell lines were loaded and separated by SDS-PAGE. The blot was incubated with anti-Transcription factor 7 like 1 antibody (Cat#AGI1706, 1:5,000) and HRP-conjugated goat anti-rabbit secondary antibody respectively.



Western blotting analysis using anti-Transcription factor 7 like 1 antibody (Cat#AGI1706). Transcription factor 7 like 1 expression in wild type (WT) and Transcription factor 7 like 1 shRNA knockdown (KD) HeLa cells with 20 µg of total cell lysates. Hsp90 α serves as a loading control. The blot was incubated with anti-Transcription factor 7 like 1 antibody (Cat#AGI1706, 1:5,000) and HRP-conjugated goat anti-rabbit secondary antibody respectively.



Flow cytometric analysis of Transcription factor 7 like 1 expression in HT-1080 cells using anti-Transcription factor 7 like 1 antibody (Cat#AGI1706, 1:2,000). Green, isotype control; red, Transcription factor 7 like 1.



Immunocytochemical staining of HT-1080 cells with anti-transcription factor 7 like 1 antibody (Cat#AGI1706, 1:1,000). Nuclei were stained blue with DAPI; Transcription factor 7 like 1 was stained magenta with Alexa Fluor® 647. Images were taken using Leica stellaris 5. Protein abundance based on laser Intensity and smart gain: Medium. Scale bar: 20 µm.