

KD-Validated Anti-TRK fused gene Rabbit Monoclonal Antibody
Rabbit monoclonal antibody
Catalog # AGI1709**Specification****KD-Validated Anti-TRK fused gene Rabbit Monoclonal Antibody - Product Information**

Application	WB, FC, ICC
Primary Accession	Q92734
Reactivity	Rat, Human, Mouse
Clonality	Monoclonal
Isotype	Rabbit IgG
Calculated MW	Predicted, 43 kDa , observed , 55 kDa KDa
Gene Name	TFG
Aliases	TFG; Trafficking From ER To Golgi Regulator; SPG57; TF6; TRK-Fused Gene Protein; Protein TFG; FLJ36137; TRK-Fused Gene; TRKT3 Oncogene; TRK-Fused;HMSNP; TRKT3
Immunogen	A synthesized peptide derived from human TRK fused gene

KD-Validated Anti-TRK fused gene Rabbit Monoclonal Antibody - Additional Information

Gene ID	10342
Other Names	
Protein TFG, TRK-fused gene protein, TFG	

KD-Validated Anti-TRK fused gene Rabbit Monoclonal Antibody - Protein Information**Name** TFG**Function**

Plays a role in the normal dynamic function of the endoplasmic reticulum (ER) and its associated microtubules (PubMed:<[a href="http://www.uniprot.org/citations/23479643"](http://www.uniprot.org/citations/23479643)target="_blank">23479643, PubMed:<[a href="http://www.uniprot.org/citations/27813252"](http://www.uniprot.org/citations/27813252)target="_blank">27813252). Required for secretory cargo traffic from the endoplasmic reticulum to the Golgi apparatus (PubMed:<[a href="http://www.uniprot.org/citations/21478858"](http://www.uniprot.org/citations/21478858)target="_blank">21478858).

Cellular Location

Endoplasmic reticulum. Note=Localizes to endoplasmic reticulum exit site (ERES), also known as transitional endoplasmic reticulum (tER) (PubMed:21478858, PubMed:27813252).

Tissue Location

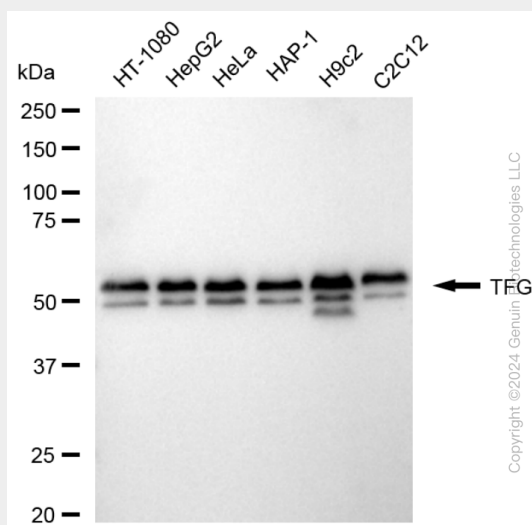
Ubiquitous.

KD-Validated Anti-TRK fused gene Rabbit Monoclonal Antibody - Protocols

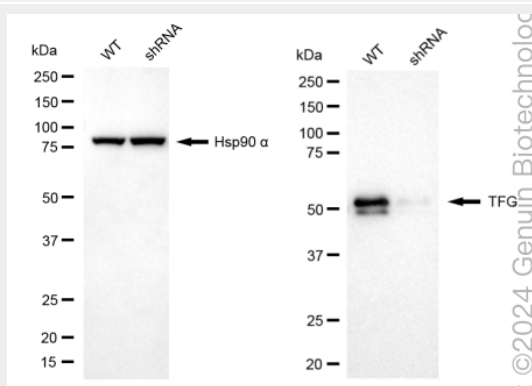
Provided below are standard protocols that you may find useful for product applications.

- [Western Blot](#)
- [Blocking Peptides](#)
- [Dot Blot](#)
- [Immunohistochemistry](#)
- [Immunofluorescence](#)
- [Immunoprecipitation](#)
- [Flow Cytometry](#)
- [Cell Culture](#)

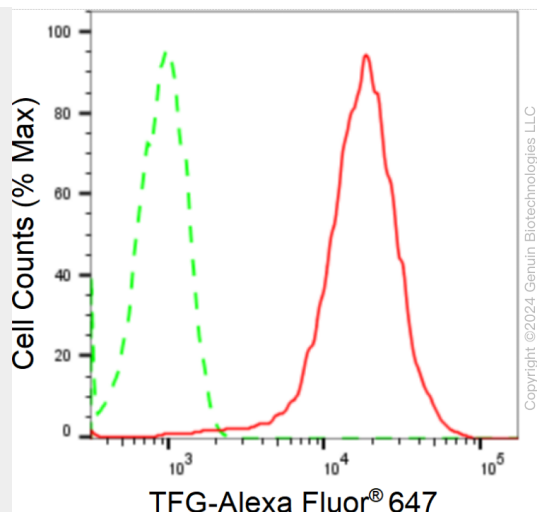
KD-Validated Anti-TRK fused gene Rabbit Monoclonal Antibody - Images



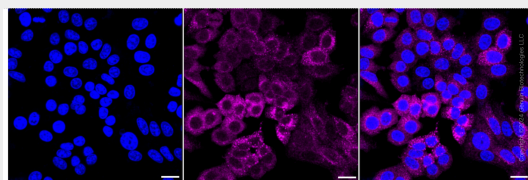
Western blotting analysis using anti-TFG antibody (Cat#AGI1709). Total cell lysates (30 µg) from various cell lines were loaded and separated by SDS-PAGE. The blot was incubated with anti-TFG antibody (Cat#AGI1709, 1:20,000) and HRP-conjugated goat anti-rabbit secondary antibody respectively.



Western blotting analysis using anti-TFG antibody (Cat#AGI1709). TFG expression in wild type (WT) and TFG shRNA knockdown (KD) HeLa cells with 20 µg of total cell lysates. Hsp90 α serves as a loading control. The blot was incubated with anti-TFG antibody (Cat#AGI1709, 1:20,000) and HRP-conjugated goat anti-rabbit secondary antibody respectively.



Flow cytometric analysis of TFG expression in HepG2 cells using anti-TFG antibody (Cat#AGI1709, 1:2,000). Green, isotype control; red, TFG.



Immunocytochemical staining of HepG2 cells with anti-TFG antibody (Cat#AGI1709, 1:1,000). Nuclei were stained blue with DAPI; TFG was stained magenta with Alexa Fluor® 647. Images were taken using Leica stellaris 5. Protein abundance based on laser Intensity and smart gain: High. Scale bar: 20 μ m.