

KD-Validated Anti-VPS28 Subunit Of ESCRT-I Rabbit Monoclonal Antibody
Rabbit monoclonal antibody
Catalog # AGI1715**Specification**

KD-Validated Anti-VPS28 Subunit Of ESCRT-I Rabbit Monoclonal Antibody - Product Information

Application	WB, FC
Primary Accession	Q9UK41
Reactivity	Rat, Human, Mouse
Clonality	Monoclonal
Isotype	Rabbit IgG
Calculated MW	Predicted, 25 kDa , observed , 25 kDa KDa
Gene Name	VPS28
Aliases	VPS28; VPS28 Subunit Of ESCRT-I ; Vacuolar Protein Sorting-Associated Protein 28 Homolog; ESCRT-I Complex Subunit VPS28; VPS28, ESCRT-I Subunit; Vacuolar Protein Sorting 28 Homolog (S. Cerevisiae); Vacuolar Protein Sorting 28-Like Protein; Yeast Class E Protein Vps28p Homolog; Vacuolar Protein Sorting 28 (Yeast); Vacuolar Protein Sorting 28 Homolog; H-Vps28
Immunogen	A synthesized peptide derived from human VPS28

KD-Validated Anti-VPS28 Subunit Of ESCRT-I Rabbit Monoclonal Antibody - Additional Information

Gene ID	51160
Other Names	
Vacuolar protein sorting-associated protein 28 homolog, H-Vps28, ESCRT-I complex subunit VPS28, VPS28	

KD-Validated Anti-VPS28 Subunit Of ESCRT-I Rabbit Monoclonal Antibody - Protein Information**Name** VPS28**Function**

Component of the ESCRT-I complex, a regulator of vesicular trafficking process.

Cellular Location

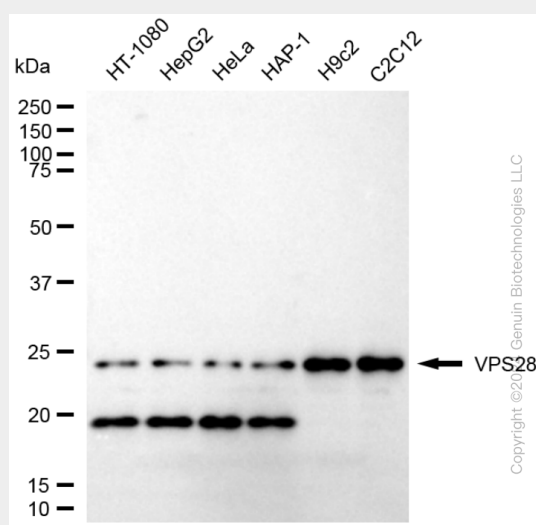
Cell membrane. Late endosome membrane; Peripheral membrane protein

KD-Validated Anti-VPS28 Subunit Of ESCRT-I Rabbit Monoclonal Antibody - Protocols

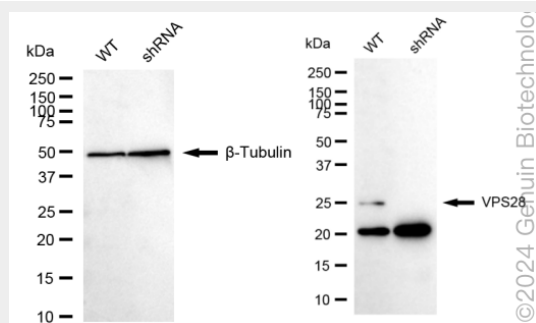
Provided below are standard protocols that you may find useful for product applications.

- [Western Blot](#)
- [Blocking Peptides](#)
- [Dot Blot](#)
- [Immunohistochemistry](#)
- [Immunofluorescence](#)
- [Immunoprecipitation](#)
- [Flow Cytometry](#)
- [Cell Culture](#)

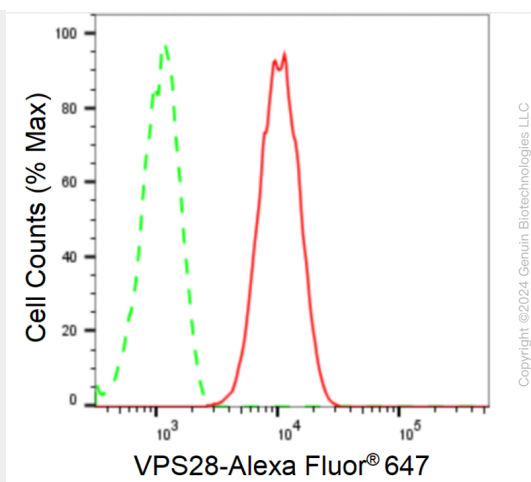
KD-Validated Anti-VPS28 Subunit Of ESCRT-I Rabbit Monoclonal Antibody - Images



Western blotting analysis using anti-VPS28 antibody (Cat#AGI1715). Total cell lysates (30 µg) from various cell lines were loaded and separated by SDS-PAGE. The blot was incubated with anti-VPS28 antibody (Cat#AGI1715, 1:5,000) and HRP-conjugated goat anti-rabbit secondary antibody respectively.



Western blotting analysis using anti-VPS28 antibody (Cat#AGI1715). VPS28 expression in wild type (WT) and VPS28 shRNA knockdown (KD) HeLa cells with 20 µg of total cell lysates. β-Tubulin serves as a loading control. The blot was incubated with anti-VPS28 antibody (Cat#AGI1715, 1:5,000) and HRP-conjugated goat anti-rabbit secondary antibody respectively.



Flow cytometric analysis of VPS28 expression in C2C12 cells using anti-VPS28 antibody (Cat#AGI1715, 1:2,000). Green, isotype control; red, VPS28.