

KD-Validated Anti-Ubiquitination Factor E4B Rabbit Monoclonal Antibody
Rabbit monoclonal antibody
Catalog # AGI1716**Specification****KD-Validated Anti-Ubiquitination Factor E4B Rabbit Monoclonal Antibody - Product Information**

Application	WB, FC, ICC
Primary Accession	O95155
Reactivity	Rat, Human, Mouse
Clonality	Monoclonal
Isotype	Rabbit IgG
Calculated MW	Predicted, 146 kDa , observed , 130 kDa
Gene Name	KDa
Aliases	UBE4B UBE4B; Ubiquitination Factor E4B; UFD2; KIAA0684; UBOX3; E4; Ubiquitination Factor E4B (UFD2 Homolog, Yeast); RING-Type E3 Ubiquitin Transferase E4 B; Ubiquitin Conjugation Factor E4 B; HDNB1; Ubiquitination Factor E4B (Homologous To Yeast UFD2); Homozygously Deleted In Neuroblastoma-1; Homozygously Deleted In Neuroblastoma 1; Ubiquitin-Fusion Degradation Protein 2; Ubiquitin Fusion Degradation Protein 2; Homologous To Yeast UFD2; EC 2.3.2.27; UFD2A
Immunogen	A synthesized peptide derived from human UBE4B

KD-Validated Anti-Ubiquitination Factor E4B Rabbit Monoclonal Antibody - Additional Information

Gene ID	10277
Other Names	
Ubiquitin conjugation factor E4 B, 2.3.2.27, UBE4B (HGNC:12500)	

KD-Validated Anti-Ubiquitination Factor E4B Rabbit Monoclonal Antibody - Protein Information**Name** UBE4B ([HGNC:12500](#))**Function**

Ubiquitin-protein ligase that probably functions as an E3 ligase in conjunction with specific E1 and E2 ligases (By similarity). May also function as an E4 ligase mediating the assembly of polyubiquitin chains on substrates ubiquitinated by another E3 ubiquitin ligase (By similarity). May

regulate myosin assembly in striated muscles together with STUB1 and VCP/p97 by targeting myosin chaperone UNC45B for proteasomal degradation (PubMed:17369820).

Cellular Location

Cytoplasm. Nucleus {ECO:0000250|UniProtKB:Q9ES00}

Tissue Location

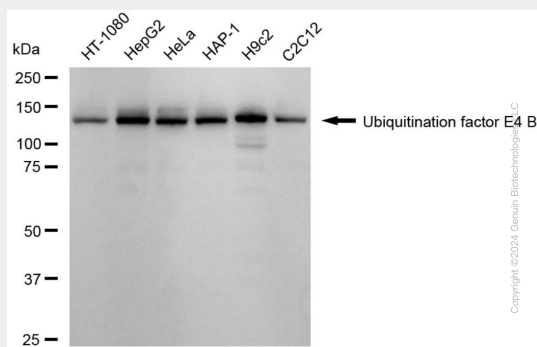
Expressed in differentiated myotubes (at protein level) (PubMed:17369820). Highest expression in ovary, testis, heart and skeletal muscle (PubMed:11802788). Expression is low in colon, thymus and peripheral blood leukocytes (PubMed:11802788). Almost undetectable in lung and spleen (PubMed:11802788)

KD-Validated Anti-Ubiquitination Factor E4B Rabbit Monoclonal Antibody - Protocols

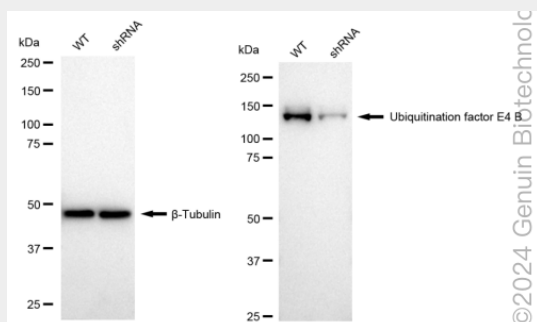
Provided below are standard protocols that you may find useful for product applications.

- [Western Blot](#)
- [Blocking Peptides](#)
- [Dot Blot](#)
- [Immunohistochemistry](#)
- [Immunofluorescence](#)
- [Immunoprecipitation](#)
- [Flow Cytometry](#)
- [Cell Culture](#)

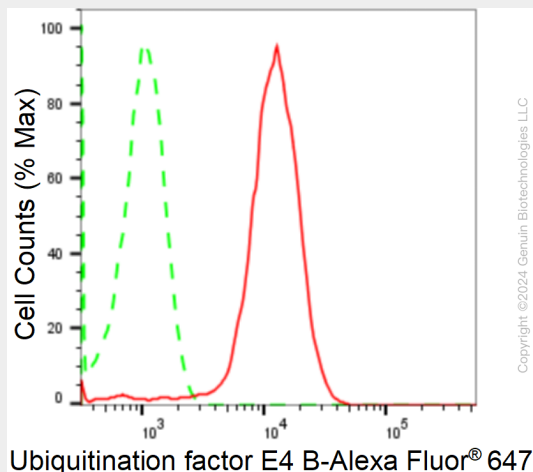
KD-Validated Anti-Ubiquitination Factor E4B Rabbit Monoclonal Antibody - Images



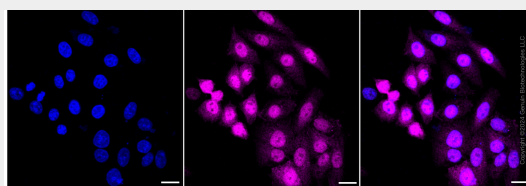
Western blotting analysis using anti-Ubiquitination factor E4 B antibody (Cat#AGI1716). Total cell lysates (30 µg) from various cell lines were loaded and separated by SDS-PAGE. The blot was incubated with anti-Ubiquitination factor E4 B antibody (Cat#AGI1716, 1:5,000) and HRP-conjugated goat anti-rabbit secondary antibody respectively.



Western blotting analysis using anti-Ubiquitination factor E4 B antibody (Cat#AGI1716). Ubiquitination factor E4 B expression in wild type (WT) and Ubiquitination factor E4 B shRNA knockdown (KD) HeLa cells with 20 µg of total cell lysates. β-Tubulin serves as a loading control. The blot was incubated with anti-Ubiquitination factor E4 B antibody (Cat#AGI1716, 1:5,000) and HRP-conjugated goat anti-rabbit secondary antibody respectively.



Flow cytometric analysis of Ubiquitination factor E4 B expression in HepG2 cells using anti-Ubiquitination factor E4 B antibody (Cat#AGI1716, 1:2,000). Green, isotype control; red, Ubiquitination factor E4 B.



Immunocytochemical staining of HepG2 cells with anti-Ubiquitination factor E4 B antibody (Cat#AGI1716, 1:1,000). Nuclei were stained blue with DAPI; Ubiquitination factor E4 B was stained magenta with Alexa Fluor® 647. Images were taken using Leica stellaris 5. Protein abundance based on laser Intensity and smart gain: Medium. Scale bar: 20 µm.