

**KD-Validated Anti-STAT5A Rabbit Monoclonal Antibody**  
**Rabbit monoclonal antibody**  
**Catalog # AGI1719****Specification**

---

**KD-Validated Anti-STAT5A Rabbit Monoclonal Antibody - Product Information**

Application	WB, FC
Primary Accession	<a href="#">P42229</a>
Reactivity	Human, Mouse
Clonality	Monoclonal
Isotype	Rabbit IgG
Calculated MW	Predicted, 91 kDa , observed , 92 kDa KDa
Gene Name	STAT5A
Aliases	STAT5A; Signal Transducer And Activator Of Transcription 5A; STAT5; MGF; Epididymis Secretory Sperm Binding Protein
Immunogen	A synthesized peptide derived from human STAT5a

**KD-Validated Anti-STAT5A Rabbit Monoclonal Antibody - Additional Information**

Gene ID	6776
<b>Other Names</b>	
Signal transducer and activator of transcription 5A, STAT5A, STAT5	

**KD-Validated Anti-STAT5A Rabbit Monoclonal Antibody - Protein Information****Name** STAT5A**Synonyms** STAT5**Function**

Carries out a dual function: signal transduction and activation of transcription. Mediates cellular responses to the cytokine KITLG/SCF and other growth factors. Mediates cellular responses to ERBB4. May mediate cellular responses to activated FGFR1, FGFR2, FGFR3 and FGFR4. Binds to the GAS element and activates PRL- induced transcription. Regulates the expression of milk proteins during lactation.

**Cellular Location**

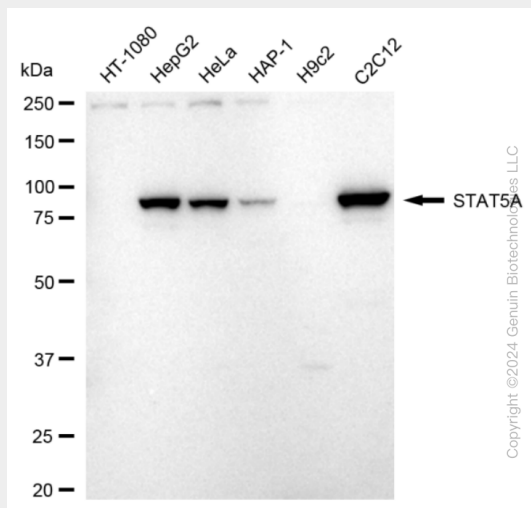
Cytoplasm. Nucleus. Note=Translocated into the nucleus in response to phosphorylation

**KD-Validated Anti-STAT5A Rabbit Monoclonal Antibody - Protocols**

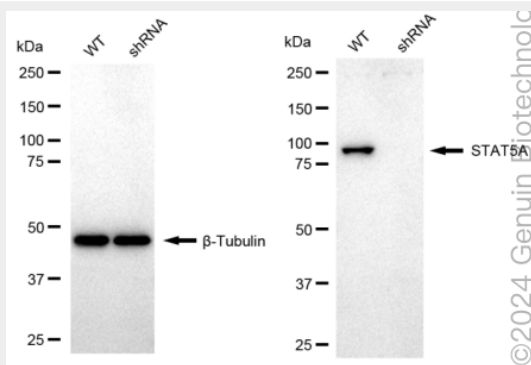
Provided below are standard protocols that you may find useful for product applications.

- [Western Blot](#)
- [Blocking Peptides](#)
- [Dot Blot](#)
- [Immunohistochemistry](#)
- [Immunofluorescence](#)
- [Immunoprecipitation](#)
- [Flow Cytometry](#)
- [Cell Culture](#)

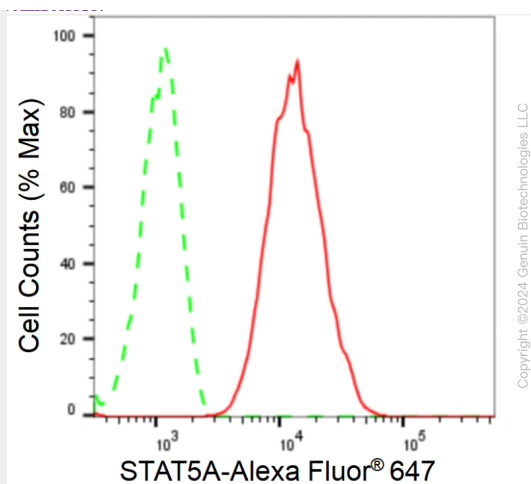
## KD-Validated Anti-STAT5A Rabbit Monoclonal Antibody - Images



Western blotting analysis using anti-STAT5A antibody (Cat#AGI1719). Total cell lysates (30  $\mu$ g) from various cell lines were loaded and separated by SDS-PAGE. The blot was incubated with anti-STAT5A antibody (Cat#AGI1719, 1:5,000) and HRP-conjugated goat anti-rabbit secondary antibody respectively.



Western blotting analysis using anti-STAT5A antibody (Cat#AGI1719). STAT5A expression in wild type (WT) and STAT5A shRNA knockdown (KD) HeLa cells with 20  $\mu$ g of total cell lysates.  $\beta$ -Tubulin serves as a loading control. The blot was incubated with anti-STAT5A antibody (Cat#AGI1719, 1:5,000) and HRP-conjugated goat anti-rabbit secondary antibody respectively.



Flow cytometric analysis of STAT5A expression in C2C12 cells using anti-STAT5A antibody (Cat#AGI1719, 1:2,000). Green, isotype control; red, STAT5A.