

KD-Validated Anti-Tripeptidyl peptidase 2 Rabbit Monoclonal Antibody
Rabbit monoclonal antibody
Catalog # AGI1721**Specification****KD-Validated Anti-Tripeptidyl peptidase 2 Rabbit Monoclonal Antibody - Product Information**

Application	WB
Primary Accession	P29144
Reactivity	Rat, Human, Mouse
Clonality	Monoclonal
Isotype	Rabbit IgG
Calculated MW	Predicted, 138 kDa , observed , 138 kDa
Gene Name	KDa
Aliases	TPP2 TPP2; Tripeptidyl Peptidase 2; TPPII; Tripeptidyl Aminopeptidase; Tripeptidyl-Peptidase II; Tripeptidyl-Peptidase; EC 3.4.14.10; TPP-II; TPP-2; Tripeptidyl Peptidase II; IMD78
Immunogen	A synthesized peptide derived from human Tripeptidyl peptidase II

KD-Validated Anti-Tripeptidyl peptidase 2 Rabbit Monoclonal Antibody - Additional Information

Gene ID	7174
Other Names	
Tripeptidyl-peptidase 2, TPP-2, 3.4.14.10, Tripeptidyl aminopeptidase, Tripeptidyl-peptidase II, TPP-II, TPP2	

KD-Validated Anti-Tripeptidyl peptidase 2 Rabbit Monoclonal Antibody - Protein Information**Name** TPP2**Function**

Cytosolic tripeptidyl-peptidase that releases N-terminal tripeptides from polypeptides and is a component of the proteolytic cascade acting downstream of the 26S proteasome in the ubiquitin-proteasome pathway (PubMed: [25525876](http://www.uniprot.org/citations/25525876), PubMed: [30533531](http://www.uniprot.org/citations/30533531)). It plays an important role in intracellular amino acid homeostasis (PubMed: [25525876](http://www.uniprot.org/citations/25525876)). Stimulates adipogenesis (By similarity).

Cellular Location

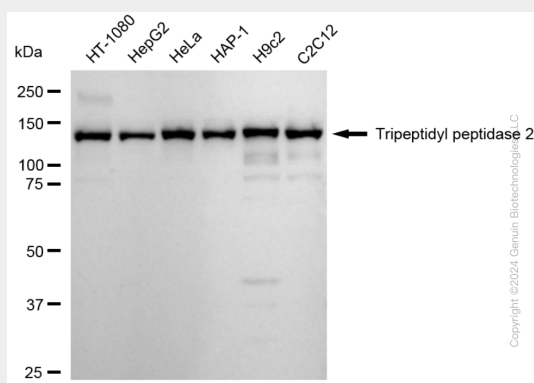
Cytoplasm. Nucleus. Note=Translocates to the nucleus in response to gamma-irradiation

KD-Validated Anti-Tripeptidyl peptidase 2 Rabbit Monoclonal Antibody - Protocols

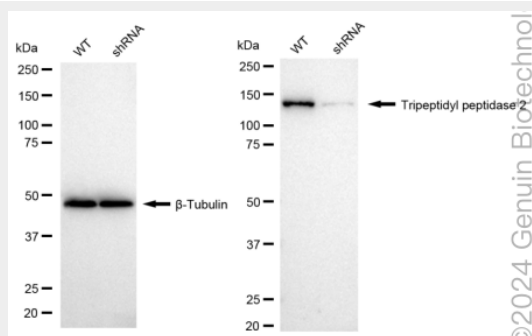
Provided below are standard protocols that you may find useful for product applications.

- [Western Blot](#)
- [Blocking Peptides](#)
- [Dot Blot](#)
- [Immunohistochemistry](#)
- [Immunofluorescence](#)
- [Immunoprecipitation](#)
- [Flow Cytometry](#)
- [Cell Culture](#)

KD-Validated Anti-Tripeptidyl peptidase 2 Rabbit Monoclonal Antibody - Images



Western blotting analysis using anti-Tripeptidyl peptidase 2 antibody (Cat#AGI1721). Total cell lysates (30 µg) from various cell lines were loaded and separated by SDS-PAGE. The blot was incubated with anti-Tripeptidyl peptidase 2 antibody (Cat#AGI1721, 1:5,000) and HRP-conjugated goat anti-rabbit secondary antibody respectively.



Western blotting analysis using anti-Tripeptidyl peptidase 2 antibody (Cat#AGI1721). Tripeptidyl peptidase 2 expression in wild type (WT) and Tripeptidyl peptidase 2 shRNA knockdown (KD) HeLa cells with 20 µg of total cell lysates. β-Tubulin serves as a loading control. The blot was incubated with anti-Tripeptidyl peptidase 2 antibody (Cat#AGI1721, 1:5,000) and HRP-conjugated goat anti-rabbit secondary antibody respectively.