

KD-Validated Anti-Tumor Protein P73 Rabbit Monoclonal Antibody
Rabbit monoclonal antibody
Catalog # AGI1722**Specification****KD-Validated Anti-Tumor Protein P73 Rabbit Monoclonal Antibody - Product Information**

Application	WB, FC
Primary Accession	O15350
Reactivity	Human
Clonality	Monoclonal
Isotype	Rabbit IgG
Calculated MW	Predicted, 70 kDa , observed , 70 kDa KDa
Gene Name	TP73
Aliases	TP73; Tumor Protein P73; P73; P53-Like Transcription Factor; P53-Related Protein; CILD47
Immunogen	A synthesized peptide derived from human p73

KD-Validated Anti-Tumor Protein P73 Rabbit Monoclonal Antibody - Additional Information

Gene ID	7161
Other Names	
Tumor protein p73, p53-like transcription factor, p53-related protein, TP73, P73	

KD-Validated Anti-Tumor Protein P73 Rabbit Monoclonal Antibody - Protein Information**Name** TP73**Synonyms** P73**Function**

Participates in the apoptotic response to DNA damage. Isoforms containing the transactivation domain are pro-apoptotic, isoforms lacking the domain are anti-apoptotic and block the function of p53 and transactivating p73 isoforms. May be a tumor suppressor protein. Is an activator of FOXJ1 expression (By similarity). It is an essential factor for the positive regulation of lung ciliated cell differentiation (PubMed:34077761).

Cellular Location

Nucleus. Cytoplasm. Note=Accumulates in the nucleus in response to DNA damage

Tissue Location

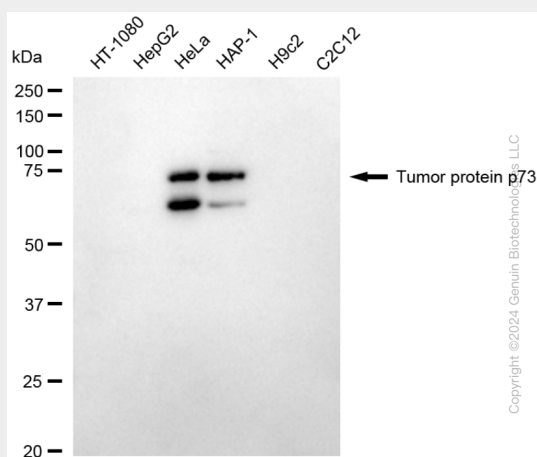
Expressed in striatal neurons of patients with Huntington disease (at protein level). Brain, kidney, placenta, colon, heart, liver, spleen, skeletal muscle, prostate, thymus and pancreas Highly expressed in fetal tissue. Expressed in the respiratory epithelium (PubMed:34077761).

KD-Validated Anti-Tumor Protein P73 Rabbit Monoclonal Antibody - Protocols

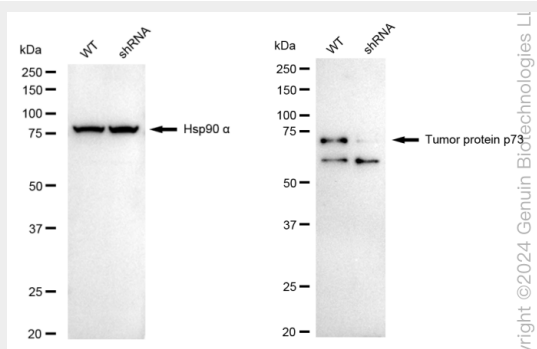
Provided below are standard protocols that you may find useful for product applications.

- [Western Blot](#)
- [Blocking Peptides](#)
- [Dot Blot](#)
- [Immunohistochemistry](#)
- [Immunofluorescence](#)
- [Immunoprecipitation](#)
- [Flow Cytometry](#)
- [Cell Culture](#)

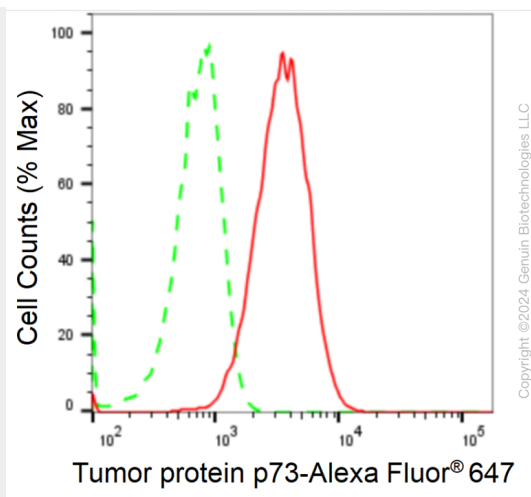
KD-Validated Anti-Tumor Protein P73 Rabbit Monoclonal Antibody - Images



Western blotting analysis using anti-tumor protein p73 antibody (Cat#AGI1722). Total cell lysates (30 µg) from various cell lines were loaded and separated by SDS-PAGE. The blot was incubated with anti-tumor protein p73 antibody (Cat#AGI1722, 1:5,000) and HRP-conjugated goat anti-rabbit secondary antibody respectively.



Western blotting analysis using anti-tumor protein p73 antibody (Cat#AGI1722). Tumor protein p73 expression in wild-type (WT) and tumor protein p73 (TP73) shRNA knockdown (KD) HeLa cells with 30 µg of total cell lysates. Hsp90 α serves as a loading control. The blot was incubated with anti-tumor protein p73 antibody (Cat#AGI1722, 1:5,000) and HRP-conjugated goat anti-rabbit secondary antibody respectively.



Flow cytometric analysis of Tumor protein p73 expression in HAP-1 cells using anti-Tumor protein p73 antibody (Cat#AGI1722, 1:2,000). Green, isotype control; red, Tumor protein p73.