

KD-Validated Anti-TNFRSF12A Rabbit Monoclonal Antibody
Rabbit monoclonal antibody
Catalog # AGI1723**Specification**

KD-Validated Anti-TNFRSF12A Rabbit Monoclonal Antibody - Product Information

Application	WB, FC
Primary Accession	Q9NP84
Reactivity	Human
Clonality	Monoclonal
Isotype	Rabbit IgG
Calculated MW	Predicted, 14 kDa , observed , 18 kDa KDa
Gene Name	TNFRSF12A
Aliases	TNFRSF12A; TNF Receptor Superfamily Member 12A; TweakR; FN14; CD266; Fibroblast Growth Factor-Inducible Immediate-Early Response Protein 14; Tumor Necrosis Factor Receptor Superfamily Member 12A; FGF-Inducible 14; Tweak-Receptor; Tumor Necrosis Factor Receptor Superfamily, Member 12A; Type I Transmembrane Protein Fn14; CD266 Antigen
Immunogen	A synthesized peptide derived from human TWEAKR

KD-Validated Anti-TNFRSF12A Rabbit Monoclonal Antibody - Additional Information

Gene ID	51330
Other Names	
Tumor necrosis factor receptor superfamily member 12A, Fibroblast growth factor-inducible immediate-early response protein 14, FGF-inducible 14, Tweak-receptor, TweakR, CD266, TNFRSF12A, FN14	

KD-Validated Anti-TNFRSF12A Rabbit Monoclonal Antibody - Protein Information**Name** TNFRSF12A**Synonyms** FN14**Function**

Receptor for TNFSF12/TWEAK. Weak inducer of apoptosis in some cell types. Promotes angiogenesis and the proliferation of endothelial cells. May modulate cellular adhesion to matrix proteins.

Cellular Location

Membrane; Single-pass type I membrane protein.

Tissue Location

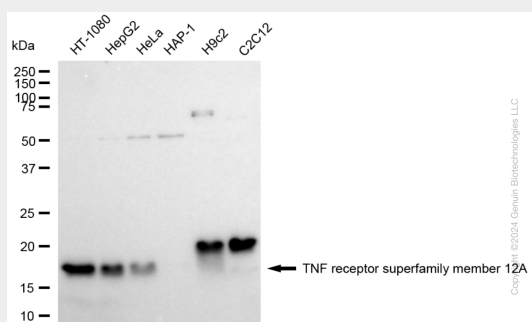
Highly expressed in heart, placenta and kidney. Intermediate expression in lung, skeletal muscle and pancreas

KD-Validated Anti-TNFRSF12A Rabbit Monoclonal Antibody - Protocols

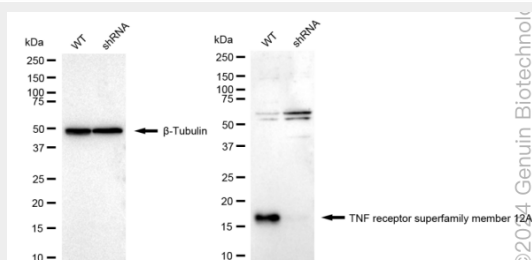
Provided below are standard protocols that you may find useful for product applications.

- [Western Blot](#)
- [Blocking Peptides](#)
- [Dot Blot](#)
- [Immunohistochemistry](#)
- [Immunofluorescence](#)
- [Immunoprecipitation](#)
- [Flow Cytometry](#)
- [Cell Culture](#)

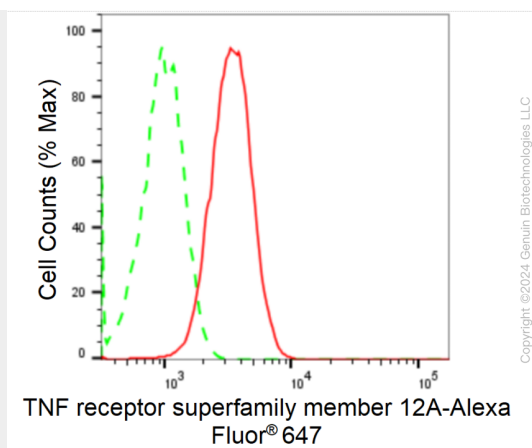
KD-Validated Anti-TNFRSF12A Rabbit Monoclonal Antibody - Images



Western blotting analysis using anti-TNF receptor superfamily member 12A antibody (Cat#AGI1723). Total cell lysates (30 µg) from various cell lines were loaded and separated by SDS-PAGE. The blot was incubated with anti-TNF receptor superfamily member 12A antibody (Cat#AGI1723, 1:5,000) and HRP-conjugated goat anti-rabbit secondary antibody respectively.



Western blotting analysis using anti-TNF receptor superfamily member 12A antibody (Cat#AGI1723). TNF receptor superfamily member 12A expression in wild type (WT) and TNF receptor superfamily member 12A shRNA knockdown (KD) HeLa cells with 20 µg of total cell lysates. β-Tubulin serves as a loading control. The blot was incubated with anti-TNF receptor superfamily member 12A antibody (Cat#AGI1723, 1:5,000) and HRP-conjugated goat anti-rabbit secondary antibody respectively.



Flow cytometric analysis of TNF receptor superfamily member 12A expression in HT-1080 cells using anti-TNF receptor superfamily member 12A antibody (Cat#AGI1723, 1:2,000). Green, isotype control; red, TNF receptor superfamily member 12A.