

KD-Validated Anti-STAT5B Rabbit Monoclonal Antibody
Rabbit monoclonal antibody
Catalog # AGI1724**Specification**

KD-Validated Anti-STAT5B Rabbit Monoclonal Antibody - Product Information

Application	WB, FC
Primary Accession	P51692
Reactivity	Rat, Human, Mouse
Clonality	Monoclonal
Isotype	Rabbit IgG
Calculated MW	Predicted, 90 kDa , observed , 90 kDa KDa
Gene Name	STAT5B
Aliases	STAT5B; Signal Transducer And Activator Of Transcription 5B; Transcription Factor STAT5B; GHISID2; STAT5
Immunogen	A synthesized peptide derived from human STAT5B

KD-Validated Anti-STAT5B Rabbit Monoclonal Antibody - Additional Information

Gene ID	6777
Other Names	
Signal transducer and activator of transcription 5B, STAT5B	

KD-Validated Anti-STAT5B Rabbit Monoclonal Antibody - Protein Information**Name** STAT5B**Function**

Carries out a dual function: signal transduction and activation of transcription (PubMed:29844444). Mediates cellular responses to the cytokine KITLG/SCF and other growth factors. Binds to the GAS element and activates PRL-induced transcription. Positively regulates hematopoietic/erythroid differentiation.

Cellular Location

Cytoplasm. Nucleus. Note=Translocated into the nucleus in response to phosphorylation.

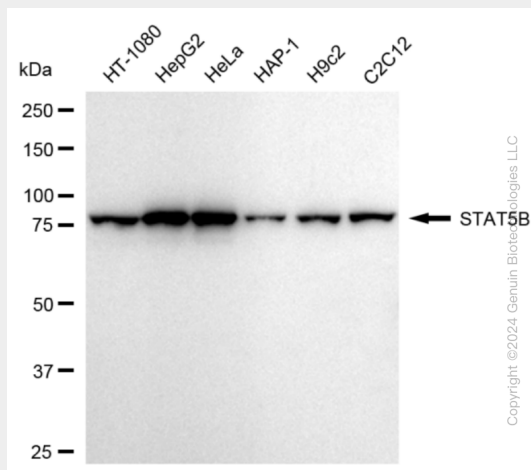
KD-Validated Anti-STAT5B Rabbit Monoclonal Antibody - Protocols

Provided below are standard protocols that you may find useful for product applications.

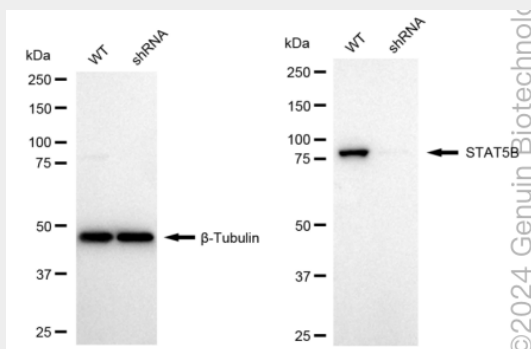
- [Western Blot](#)
- [Blocking Peptides](#)
- [Dot Blot](#)

- [Immunohistochemistry](#)
- [Immunofluorescence](#)
- [Immunoprecipitation](#)
- [Flow Cytometry](#)
- [Cell Culture](#)

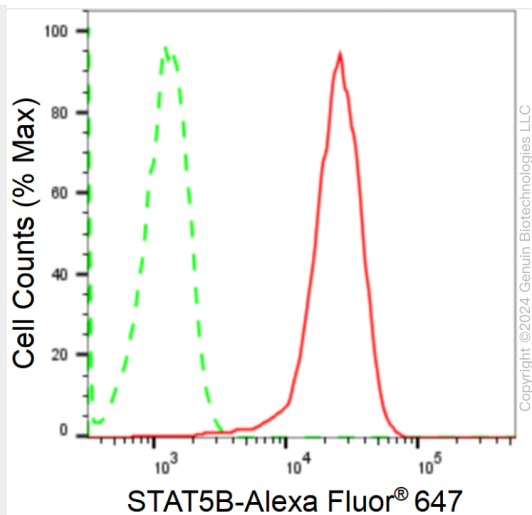
KD-Validated Anti-STAT5B Rabbit Monoclonal Antibody - Images



Western blotting analysis using anti-STAT5B antibody (Cat#AGI1724). Total cell lysates (30 µg) from various cell lines were loaded and separated by SDS-PAGE. The blot was incubated with anti-STAT5B antibody (Cat#AGI1724, 1:5,000) and HRP-conjugated goat anti-rabbit secondary antibody respectively.



Western blotting analysis using anti-STAT5B antibody (Cat#AGI1724). STAT5B expression in wild type (WT) and STAT5B shRNA knockdown (KD) HeLa cells with 20 µg of total cell lysates. β-Tubulin serves as a loading control. The blot was incubated with anti-STAT5B antibody (Cat#AGI1724, 1:5,000) and HRP-conjugated goat anti-rabbit secondary antibody respectively.



Flow cytometric analysis of STAT5B expression in HepG2 cells using anti-STAT5B antibody (Cat#AGI1724, 1:2,000). Green, isotype control; red, STAT5B.