

**KD-Validated Anti-TNF Alpha Induced Protein 8 Rabbit Monoclonal Antibody**  
**Rabbit monoclonal antibody**  
**Catalog # AGI1726****Specification**

---

**KD-Validated Anti-TNF Alpha Induced Protein 8 Rabbit Monoclonal Antibody - Product Information**

Application	WB, FC
Primary Accession	<a href="#">O95379</a>
Reactivity	Rat, Human, Mouse
Clonality	Monoclonal
Isotype	Rabbit IgG
Calculated MW	Predicted, 23 kDa , observed , 18,21 kDa
Gene Name	TNFAIP8
Aliases	TNFAIP8; TNF Alpha Induced Protein 8; MDC-3.13; SCC-S2; GG2-1; Head And Neck Tumor And Metastasis-Related Protein; Tumor Necrosis Factor Alpha-Induced Protein 8; NF-Kappa-B-Inducible DED-Containing Protein; TNF-Induced Protein GG2-1; NDED; Tumor Necrosis Factor, Alpha-Induced Protein 8; Tumor Necrosis Factor, Alpha Induced Protein 8; TNF Alpha-Induced Protein 8; SCCS2
Immunogen	A synthesized peptide derived from human TNFAIP8

**KD-Validated Anti-TNF Alpha Induced Protein 8 Rabbit Monoclonal Antibody - Additional Information**

Gene ID	25816
<b>Other Names</b>	
Tumor necrosis factor alpha-induced protein 8, TNF alpha-induced protein 8, Head and neck tumor and metastasis-related protein, MDC-3.13, NF-kappa-B-inducible DED-containing protein, NDED, SCC-S2, TNF-induced protein GG2-1, TNFAIP8	

**KD-Validated Anti-TNF Alpha Induced Protein 8 Rabbit Monoclonal Antibody - Protein Information****Name** TNFAIP8**Function**

Acts as a negative mediator of apoptosis and may play a role in tumor progression. Suppresses the TNF-mediated apoptosis by inhibiting caspase-8 activity but not the processing of procaspase-8, subsequently resulting in inhibition of BID cleavage and caspase-3 activation.

**Cellular Location**

Cytoplasm.

#### Tissue Location

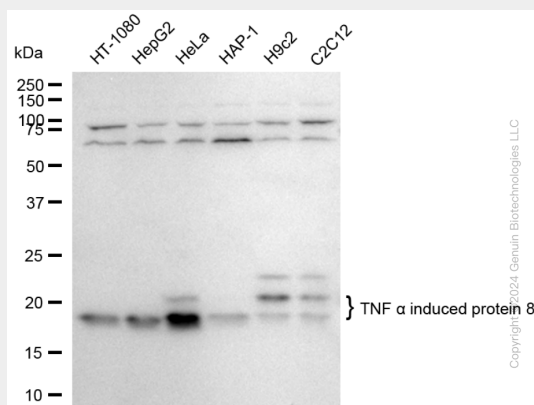
Expressed at high levels in the spleen, lymph node, thymus, thyroid, bone marrow and placenta. Expressed at high levels both in various tumor tissues, unstimulated and cytokine-activated cultured cells. Expressed at low levels in the spinal cord, ovary, lung, adrenal glands, heart, brain, testis and skeletal muscle

#### KD-Validated Anti-TNF Alpha Induced Protein 8 Rabbit Monoclonal Antibody - Protocols

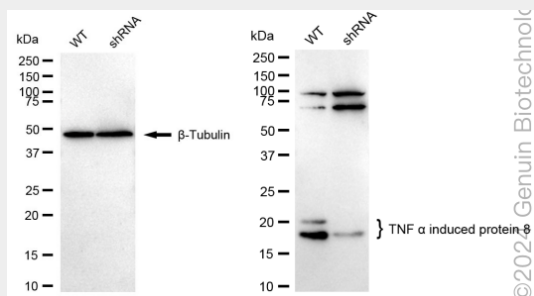
Provided below are standard protocols that you may find useful for product applications.

- [Western Blot](#)
- [Blocking Peptides](#)
- [Dot Blot](#)
- [Immunohistochemistry](#)
- [Immunofluorescence](#)
- [Immunoprecipitation](#)
- [Flow Cytometry](#)
- [Cell Culture](#)

#### KD-Validated Anti-TNF Alpha Induced Protein 8 Rabbit Monoclonal Antibody - Images

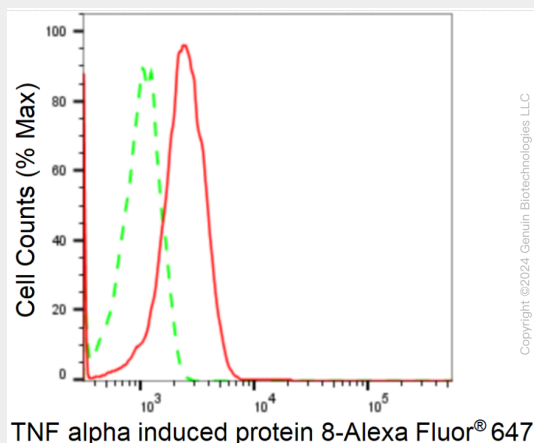


Western blotting analysis using anti-TNF alpha induced protein 8 antibody (Cat#AGI1726). Total cell lysates (30 µg) from various cell lines were loaded and separated by SDS-PAGE. The blot was incubated with anti-TNF alpha induced protein 8 antibody (Cat#AGI1726, 1:5,000) and HRP-conjugated goat anti-rabbit secondary antibody respectively.



Western blotting analysis using anti-TNF alpha induced protein 8 antibody (Cat#AGI1726). TNF alpha induced protein 8 expression in wild type (WT) and TNF alpha induced protein 8 shRNA knockdown (KD) HeLa cells with 20 µg of total cell lysates. β-Tubulin serves as a loading control.

The blot was incubated with anti-TNF alpha induced protein 8 antibody (Cat#AGI1726, 1:5,000) and HRP-conjugated goat anti-rabbit secondary antibody respectively.



Flow cytometric analysis of TNF alpha induced protein 8 expression in HeLa cells using anti-TNF alpha induced protein 8 antibody (Cat#AGI1726, 1:2,000). Green, isotype control; red, TNF alpha induced protein 8.