

**KD-Validated Anti-TIMM50 Rabbit Monoclonal Antibody**  
**Rabbit monoclonal antibody**  
**Catalog # AGI1735****Specification****KD-Validated Anti-TIMM50 Rabbit Monoclonal Antibody - Product Information**

Application	WB, FC
Primary Accession	<a href="#">Q3ZCQ8</a>
Reactivity	Human, Mouse
Clonality	Monoclonal
Isotype	Rabbit IgG
Calculated MW	Predicted, 40 kDa , observed , 36 kDa KDa
Gene Name	TIMM50
Aliases	TIMM50; Translocase Of Inner Mitochondrial Membrane 50; TIM50; TIM50L; Mitochondrial Import Inner Membrane Translocase Subunit TIM50; Translocase Of Inner Mitochondrial Membrane 50 Homolog (Yeast); Homolog Of Yeast Tim50; Tim50-Like Protein; MGCA9
Immunogen	A synthesized peptide derived from human TIMM50

**KD-Validated Anti-TIMM50 Rabbit Monoclonal Antibody - Additional Information**

Gene ID	92609
<b>Other Names</b>	
Mitochondrial import inner membrane translocase subunit TIM50, TIMM50, TIM50	

**KD-Validated Anti-TIMM50 Rabbit Monoclonal Antibody - Protein Information****Name** TIMM50**Synonyms** TIM50**Function**

Essential component of the TIM23 complex, a complex that mediates the translocation of transit peptide-containing proteins across the mitochondrial inner membrane (PubMed:<a href="http://www.uniprot.org/citations/30190335" target="\_blank">30190335</a>, PubMed:<a href="http://www.uniprot.org/citations/38828998" target="\_blank">38828998</a>). Has some phosphatase activity in vitro; however such activity may not be relevant in vivo.

**Cellular Location**

Mitochondrion inner membrane; Single-pass membrane protein

**Tissue Location**

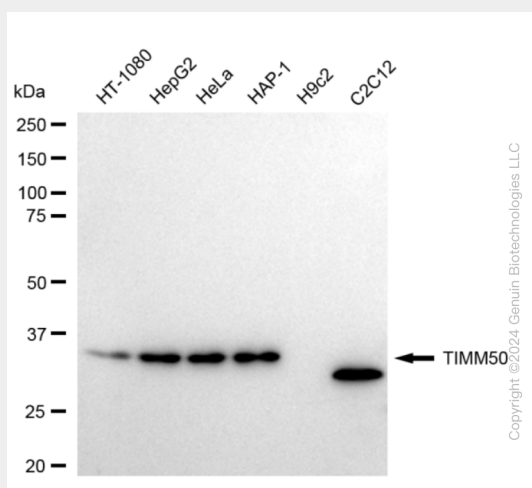
Widely expressed. Expressed at higher level in brain, kidney and liver (at protein level)

## KD-Validated Anti-TIMM50 Rabbit Monoclonal Antibody - Protocols

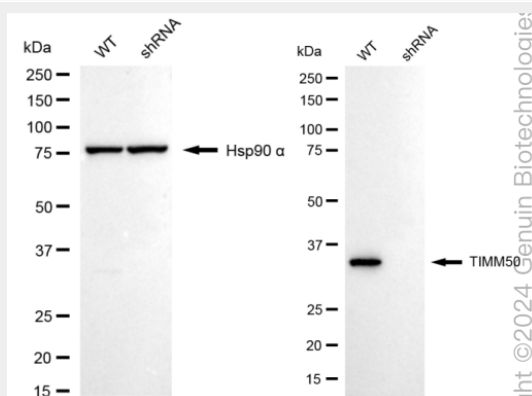
Provided below are standard protocols that you may find useful for product applications.

- [Western Blot](#)
- [Blocking Peptides](#)
- [Dot Blot](#)
- [Immunohistochemistry](#)
- [Immunofluorescence](#)
- [Immunoprecipitation](#)
- [Flow Cytometry](#)
- [Cell Culture](#)

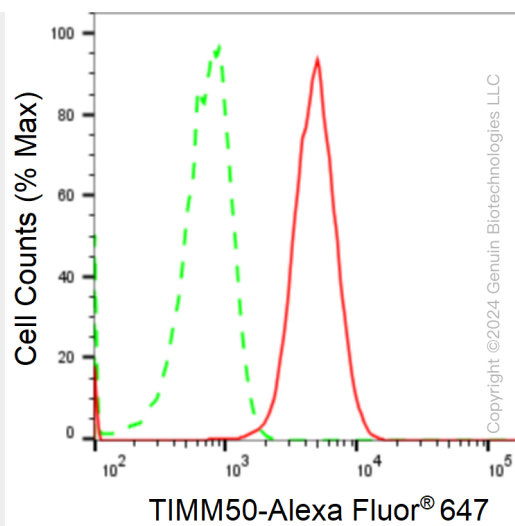
## KD-Validated Anti-TIMM50 Rabbit Monoclonal Antibody - Images



Western blotting analysis using anti-TIMM50 antibody (Cat#AGI1735). Total cell lysates (30 µg) from various cell lines were loaded and separated by SDS-PAGE. The blot was incubated with anti-TIMM50 antibody (Cat#AGI1735, 1:5,000) and HRP-conjugated goat anti-rabbit secondary antibody respectively.



Western blotting analysis using anti-TIMM50 antibody (Cat#AGI1735). TIMM50 expression in wild type (WT) and TIMM50 shRNA knockdown (KD) HeLa cells with 20 µg of total cell lysates. Hsp90 α serves as a loading control. The blot was incubated with anti-TIMM50 antibody (Cat#AGI1735, 1:5,000) and HRP-conjugated goat anti-rabbit secondary antibody respectively.



Flow cytometric analysis of TIMM50 expression in HAP-1 cells using anti-TIMM50 antibody (Cat#AGI1735, 1:2,000). Green, isotype control; red, TIMM50.