

KD-Validated Anti-Superoxide Dismutase 2 Rabbit Monoclonal Antibody
Rabbit monoclonal antibody
Catalog # AGI1736**Specification****KD-Validated Anti-Superoxide Dismutase 2 Rabbit Monoclonal Antibody - Product Information**

Application	WB
Primary Accession	P04179
Reactivity	Rat, Human, Mouse
Clonality	Monoclonal
Isotype	Rabbit IgG
Calculated MW	Predicted, 25 kDa , o bserved , 25 kDa KDa
Gene Name	SOD2
Aliases	SOD2; Superoxide Dismutase 2; GCInc1; MnSOD; IPOB; GC1; Superoxide Dismutase [Mn], Mitochondrial; Superoxide Dismutase 2, Mitochondrial; EC 1.15.1.1; Epididymis Secretory Sperm Binding Protein; Manganese-Containing Superoxide Dismutase; Gastric Cancer-Associated LncRNA 1; Gastric Cancer-Associated LncRNA 1; Manganese Superoxide Dismutase; Mangano-Superoxide Dismutase; Mn Superoxide Dismutase; Indophenoloxidase B; Mn-SOD; IPO-B; MVCD6
Immunogen	A synthesized peptide derived from human SOD2

KD-Validated Anti-Superoxide Dismutase 2 Rabbit Monoclonal Antibody - Additional Information

Gene ID	6648
Other Names	
Superoxide dismutase [Mn], mitochondrial, 1.15.1.1, SOD2	

KD-Validated Anti-Superoxide Dismutase 2 Rabbit Monoclonal Antibody - Protein Information**Name** SOD2**Function**

Destroys superoxide anion radicals which are normally produced within the cells and which are toxic to biological systems.

Cellular Location

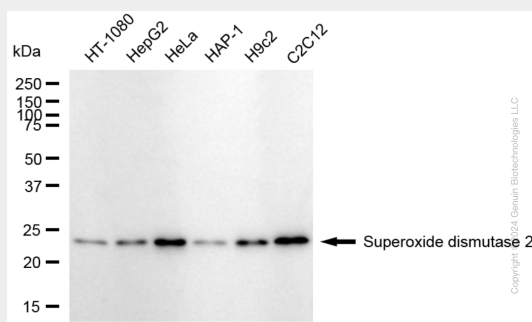
Mitochondrion matrix.

KD-Validated Anti-Superoxide Dismutase 2 Rabbit Monoclonal Antibody - Protocols

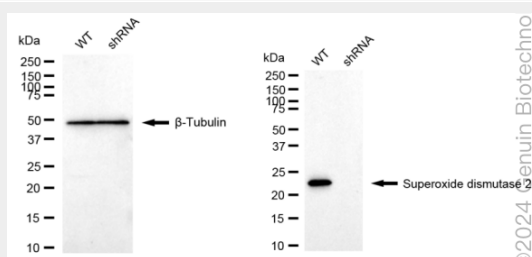
Provided below are standard protocols that you may find useful for product applications.

- [Western Blot](#)
- [Blocking Peptides](#)
- [Dot Blot](#)
- [Immunohistochemistry](#)
- [Immunofluorescence](#)
- [Immunoprecipitation](#)
- [Flow Cytometry](#)
- [Cell Culture](#)

KD-Validated Anti-Superoxide Dismutase 2 Rabbit Monoclonal Antibody - Images



Western blotting analysis using anti-Superoxide dismutase 2 antibody (Cat#62706). Total cell lysates (30 µg) from various cell lines were loaded and separated by SDS-PAGE. The blot was incubated with anti-Superoxide dismutase 2 antibody (Cat#62706, 1:5,000) and HRP-conjugated goat anti-rabbit secondary antibody (Cat#201, 1:20,000) respectively. Image was developed using FeQ™ ECL Substrate Kit (Cat#226).



Western blotting analysis using anti-Superoxide dismutase 2 antibody (Cat#62706). Superoxide dismutase 2 expression in wild type (WT) and Superoxide dismutase 2 shRNA knockdown (KD) HeLa cells with 20 µg of total cell lysates. β-Tubulin serves as a loading control. The blot was incubated with anti-Superoxide dismutase 2 antibody (Cat#62706, 1:5,000) and HRP-conjugated goat anti-rabbit secondary antibody (Cat#201, 1:20,000) respectively. Image was developed using NaQ™ ECL Substrate Kit (Cat#716).