

KD-Validated Anti-Trophoblast Glycoprotein Rabbit Monoclonal Antibody
Rabbit monoclonal antibody
Catalog # AGI1751**Specification**

KD-Validated Anti-Trophoblast Glycoprotein Rabbit Monoclonal Antibody - Product Information

Application	WB, FC, ICC
Primary Accession	Q13641
Reactivity	Rat, Human, Mouse
Clonality	Monoclonal
Isotype	Rabbit IgG
Calculated MW	Predicted, 46 kDa , observed , 72 kDa
Gene Name	KDa
Aliases	TPBG TPBG; Trophoblast Glycoprotein; 5T4; 5T4 Oncofetal Trophoblast Glycoprotein; Wnt-Activated Inhibitory Factor 1; 5T4 Oncotrophoblast Glycoprotein; 5T4 Oncofetal Antigen; 5T4-AG; WAIF1; M6P1; 5T4AG
Immunogen	A synthesized peptide derived from human 5T4

KD-Validated Anti-Trophoblast Glycoprotein Rabbit Monoclonal Antibody - Additional Information

Gene ID	7162
Other Names	
Trophoblast glycoprotein, 5T4 oncofetal antigen, 5T4 oncofetal trophoblast glycoprotein, 5T4 oncotrophoblast glycoprotein, M6P1, Wnt-activated inhibitory factor 1, WAIF1, TPBG, 5T4	

KD-Validated Anti-Trophoblast Glycoprotein Rabbit Monoclonal Antibody - Protein Information**Name** TPBG**Synonyms** 5T4**Function**

May function as an inhibitor of Wnt/beta-catenin signaling by indirectly interacting with LRP6 and blocking Wnt3a-dependent LRP6 internalization.

Cellular Location

Cell membrane; Single-pass type I membrane protein

Tissue Location

Expressed by all types of trophoblasts as early as 9 weeks of development. Specific for

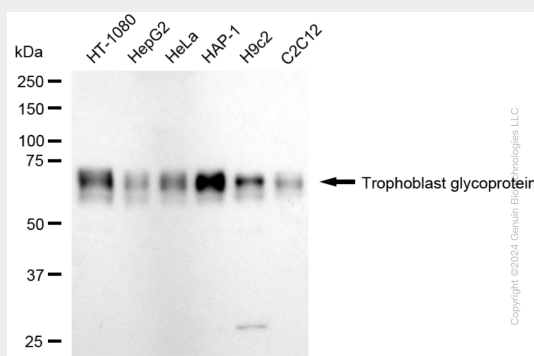
trophoblastic cells except for amniotic epithelium. In adult tissues, the expression is limited to a few epithelial cell types but is found on a variety of carcinoma

KD-Validated Anti-Trophoblast Glycoprotein Rabbit Monoclonal Antibody - Protocols

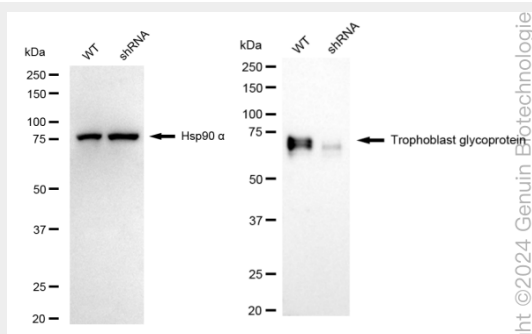
Provided below are standard protocols that you may find useful for product applications.

- [Western Blot](#)
- [Blocking Peptides](#)
- [Dot Blot](#)
- [Immunohistochemistry](#)
- [Immunofluorescence](#)
- [Immunoprecipitation](#)
- [Flow Cytometry](#)
- [Cell Culture](#)

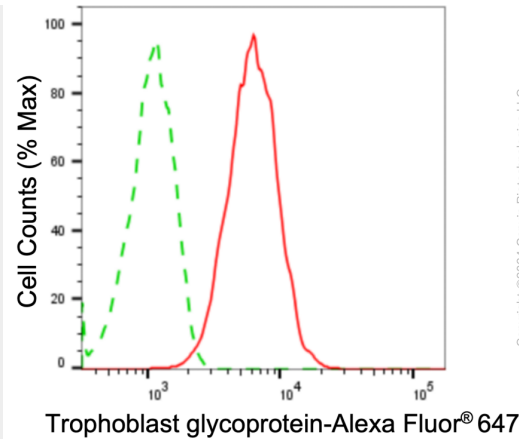
KD-Validated Anti-Trophoblast Glycoprotein Rabbit Monoclonal Antibody - Images



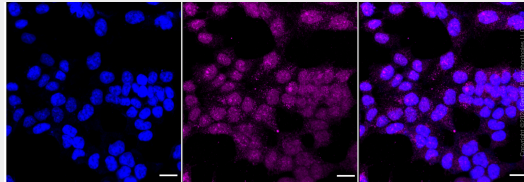
Western blotting analysis using anti-Trophoblast glycoprotein antibody (Cat#62759). Total cell lysates (30 µg) from various cell lines were loaded and separated by SDS-PAGE. The blot was incubated with anti-Trophoblast glycoprotein antibody (Cat#62759, 1:5,000) and HRP-conjugated goat anti-rabbit secondary antibody (Cat#201, 1:20,000) respectively. Image was developed using FeQ™ ECL Substrate Kit (Cat#226).



Western blotting analysis using anti-trophoblast glycoprotein antibody (Cat#62759). Trophoblast glycoprotein expression in wild-type (WT) and trophoblast glycoprotein (TPBG) shRNA knockdown (KD) HT-1080 cells with 20 µg of total cell lysates. Hsp90 α serves as a loading control. The blot was incubated with anti-trophoblast glycoprotein antibody (Cat#62759, 1:5,000) and HRP-conjugated goat anti-rabbit secondary antibody (Cat#201, 1:20,000) respectively. Image was developed using NaQ™ ECL Substrate Kit (Cat#716).



Flow cytometric analysis of Trophoblast glycoprotein expression in HAP-1 cells using anti-Trophoblast glycoprotein antibody (Cat #62759, 1:2,000). Green, isotype control; red, Trophoblast glycoprotein.



Immunocytochemical staining of HAP-1 with anti-trophoblast glycoprotein antibody (Cat#62759, 1:1,000). Nuclei were stained blue with DAPI; Trophoblast glycoprotein was stained magenta with Alexa Fluor® 647. Images were taken using Leica stellaris 5. Protein abundance based on laser Intensity and smart gain: Medium. Scale bar: 20 µm.