

**KD-Validated Anti-Trophoblast Glycoprotein Rabbit Monoclonal Antibody**  
**Rabbit monoclonal antibody**  
**Catalog # AGI1753****Specification**

---

**KD-Validated Anti-Trophoblast Glycoprotein Rabbit Monoclonal Antibody - Product Information**

Application	WB, FC
Primary Accession	<a href="#">Q13641</a>
Reactivity	Human
Clonality	Monoclonal
Isotype	Rabbit IgG
Calculated MW	Predicted, 46 kDa , observed , 75 kDa
Gene Name	KDa
Aliases	TPBG TPBG; Trophoblast Glycoprotein; 5T4; 5T4 Oncofetal Trophoblast Glycoprotein; Wnt-Activated Inhibitory Factor 1; 5T4 Oncotrophoblast Glycoprotein; 5T4 Oncofetal Antigen; 5T4-AG; WAIF1; M6P1; 5T4AG
Immunogen	A synthesized peptide derived from human 5T4

**KD-Validated Anti-Trophoblast Glycoprotein Rabbit Monoclonal Antibody - Additional Information**

Gene ID	7162
<b>Other Names</b>	
Trophoblast glycoprotein, 5T4 oncofetal antigen, 5T4 oncofetal trophoblast glycoprotein, 5T4 oncotrophoblast glycoprotein, M6P1, Wnt-activated inhibitory factor 1, WAIF1, TPBG, 5T4	

**KD-Validated Anti-Trophoblast Glycoprotein Rabbit Monoclonal Antibody - Protein Information****Name** TPBG**Synonyms** 5T4**Function**

May function as an inhibitor of Wnt/beta-catenin signaling by indirectly interacting with LRP6 and blocking Wnt3a-dependent LRP6 internalization.

**Cellular Location**

Cell membrane; Single-pass type I membrane protein

**Tissue Location**

Expressed by all types of trophoblasts as early as 9 weeks of development. Specific for

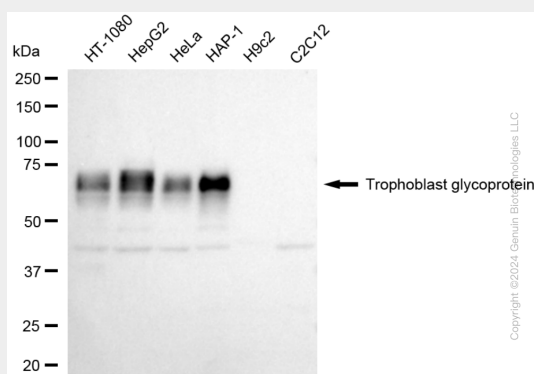
trophoblastic cells except for amniotic epithelium. In adult tissues, the expression is limited to a few epithelial cell types but is found on a variety of carcinoma

## KD-Validated Anti-Trophoblast Glycoprotein Rabbit Monoclonal Antibody - Protocols

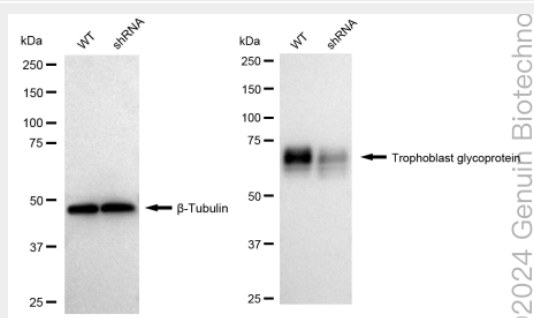
Provided below are standard protocols that you may find useful for product applications.

- [Western Blot](#)
- [Blocking Peptides](#)
- [Dot Blot](#)
- [Immunohistochemistry](#)
- [Immunofluorescence](#)
- [Immunoprecipitation](#)
- [Flow Cytometry](#)
- [Cell Culture](#)

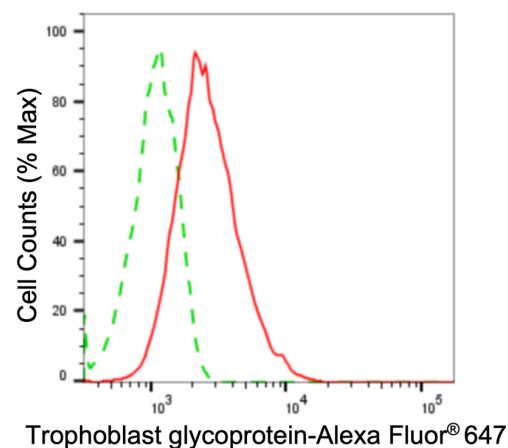
## KD-Validated Anti-Trophoblast Glycoprotein Rabbit Monoclonal Antibody - Images



Western blotting analysis using anti-Trophoblast glycoprotein antibody (Cat#AGI1753). Total cell lysates (30 µg) from various cell lines were loaded and separated by SDS-PAGE. The blot was incubated with anti-Trophoblast glycoprotein antibody (Cat#AGI1753, 1:5,000) and HRP-conjugated goat anti-rabbit secondary antibody respectively.



Western blotting analysis using anti-Trophoblast glycoprotein antibody (Cat#AGI1753). Trophoblast glycoprotein expression in wild type (WT) and Trophoblast glycoprotein shRNA knockdown (KD) HT-1080 cells with 20 µg of total cell lysates. β-Tubulin serves as a loading control. The blot was incubated with anti-Trophoblast glycoprotein antibody (Cat#AGI1753, 1:5,000) and HRP-conjugated goat anti-rabbit secondary antibody respectively.



Flow cytometric analysis of Trophoblast glycoprotein expression in HAP-1 cells using anti-Trophoblast glycoprotein antibody (Cat #AGI1753, 1:2,000). Green, isotype control; red, Trophoblast glycoprotein.