

KD-Validated Anti-Synaptosome Associated Protein 25 Rabbit Monoclonal Antibody
Rabbit monoclonal antibody
Catalog # AGI1757**Specification**

KD-Validated Anti-Synaptosome Associated Protein 25 Rabbit Monoclonal Antibody - Product Information

Application	WB
Primary Accession	P60880
Reactivity	Human
Clonality	Monoclonal
Isotype	Rabbit IgG
Calculated MW	Predicted, 23 kDa , o bserved , 25 kDa KDa
Gene Name	SNAP25
Aliases	SNAP25; Synaptosome Associated Protein 25; SNAP-25; DJ1068F16.2; BA416N4.2; RIC-4; RIC4; SEC9; SNAP; Resistance To Inhibitors Of Cholinesterase 4 Homolog; Synaptosomal-Associated Protein, 25kDa; Synaptosomal-Associated Protein 25; SUP; Synaptosomal-Associated 25 KDa Protein; Synaptosome Associated Protein 25kDa; Super Protein; CMS18
Immunogen	A synthesized peptide derived from human SNAP25

KD-Validated Anti-Synaptosome Associated Protein 25 Rabbit Monoclonal Antibody - Additional Information

Gene ID	6616
Other Names	
Synaptosomal-associated protein 25, SNAP-25, Super protein, SUP, Synaptosomal-associated 25 kDa protein, SNAP25, SNAP	

KD-Validated Anti-Synaptosome Associated Protein 25 Rabbit Monoclonal Antibody - Protein Information**Name** SNAP25**Synonyms** SNAP**Function**

t-SNARE involved in the molecular regulation of neurotransmitter release. May play an important role in the synaptic function of specific neuronal systems. Associates with proteins involved in vesicle docking and membrane fusion. Regulates plasma membrane recycling through its interaction with CENPF. Modulates the gating characteristics of the delayed rectifier voltage-dependent potassium channel KCNB1 in pancreatic beta cells.

Cellular Location

Cytoplasm, perinuclear region {ECO:0000250|UniProtKB:P60879}. Cell membrane {ECO:0000250|UniProtKB:P60881}; Lipid-anchor {ECO:0000250|UniProtKB:P60879}. Synapse, synaptosome {ECO:0000250|UniProtKB:P60879}. Photoreceptor inner segment {ECO:0000250|UniProtKB:P60879}. Note=Membrane association requires palmitoylation. Expressed throughout cytoplasm, concentrating at the perinuclear region. Colocalizes with KCNB1 at the cell membrane (By similarity). Colocalizes with PLCL1 at the cell membrane (By similarity). {ECO:0000250|UniProtKB:P60879, ECO:0000250|UniProtKB:P60881}

Tissue Location

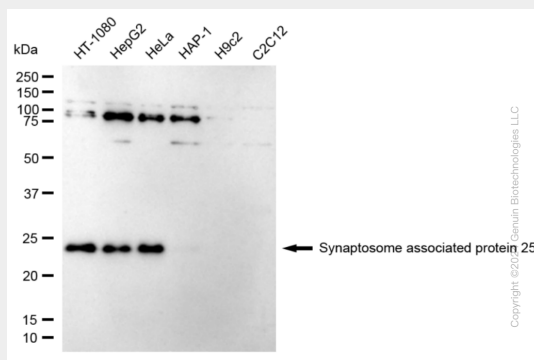
Neurons of the neocortex, hippocampus, piriform cortex, anterior thalamic nuclei, pontine nuclei, and granule cells of the cerebellum

KD-Validated Anti-Synaptosome Associated Protein 25 Rabbit Monoclonal Antibody - Protocols

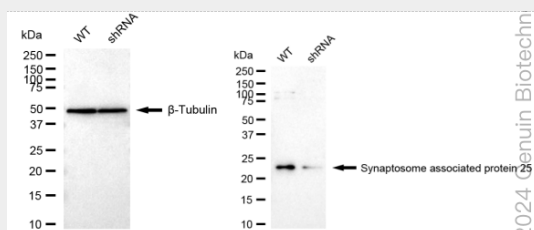
Provided below are standard protocols that you may find useful for product applications.

- [Western Blot](#)
- [Blocking Peptides](#)
- [Dot Blot](#)
- [Immunohistochemistry](#)
- [Immunofluorescence](#)
- [Immunoprecipitation](#)
- [Flow Cytometry](#)
- [Cell Culture](#)

KD-Validated Anti-Synaptosome Associated Protein 25 Rabbit Monoclonal Antibody - Images



Western blotting analysis using anti-Synaptosome associated protein 25 antibody (Cat#AGI1757). Total cell lysates (30 µg) from various cell lines were loaded and separated by SDS-PAGE. The blot was incubated with anti-Synaptosome associated protein 25 antibody (Cat#AGI1757, 1:5,000) and HRP-conjugated goat anti-rabbit secondary antibody respectively.



Western blotting analysis using anti-Synaptosome associated protein 25 antibody (Cat#AGI1757). Synaptosome associated protein 25 expression in wild type (WT) and Synaptosome associated protein 25 shRNA knockdown (KD) HT-1080 cells with 20 μ g of total cell lysates. β -Tubulin serves as a loading control. The blot was incubated with anti-Synaptosome associated protein 25 antibody (Cat#AGI1757, 1:5,000) and HRP-conjugated goat anti-rabbit secondary antibody respectively.