

KD-Validated Anti-TATA Element Modulatory Factor 1 Rabbit Monoclonal Antibody
Rabbit monoclonal antibody
Catalog # AGI1762**Specification**

KD-Validated Anti-TATA Element Modulatory Factor 1 Rabbit Monoclonal Antibody - Product Information

Application	WB, FC, ICC
Primary Accession	P82094
Reactivity	Human
Clonality	Monoclonal
Isotype	Rabbit IgG
Calculated MW	Predicted, 123 kDa , observed , 150 kDa
Gene Name	KDa
Aliases	TMF1 TMF1; TATA Element Modulatory Factor 1; ARA160; TMF; Androgen Receptor-Associated Protein Of 160 KDa; Androgen Receptor Coactivator 160 KDa Protein; TATA Element Modulatory Factor A synthesized peptide derived from human TMF
Immunogen	

KD-Validated Anti-TATA Element Modulatory Factor 1 Rabbit Monoclonal Antibody - Additional Information

Gene ID	7110
Other Names	
TATA element modulatory factor, TMF, Androgen receptor coactivator 160 kDa protein, Androgen receptor-associated protein of 160 kDa, TMF1, ARA160	

KD-Validated Anti-TATA Element Modulatory Factor 1 Rabbit Monoclonal Antibody - Protein Information**Name** TMF1**Synonyms** ARA160**Function**

Potential coactivator of the androgen receptor. Mediates STAT3 degradation. May play critical roles in two RAB6-dependent retrograde transport processes: one from endosomes to the Golgi and the other from the Golgi to the ER. This protein binds the HIV-1 TATA element and inhibits transcriptional activation by the TATA-binding protein (TBP).

Cellular Location

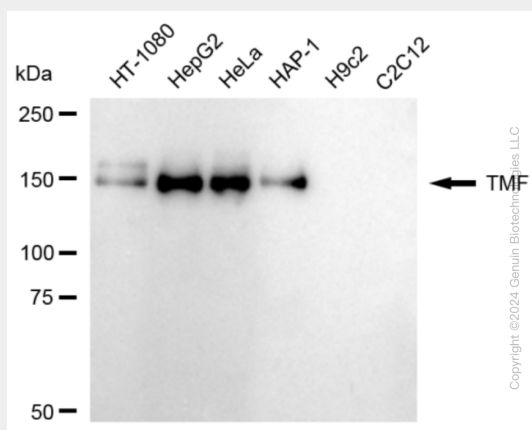
Cytoplasm. Nucleus. Golgi apparatus membrane. Note=Concentrated at the budding structures localized at the tips of cisternae

KD-Validated Anti-TATA Element Modulatory Factor 1 Rabbit Monoclonal Antibody - Protocols

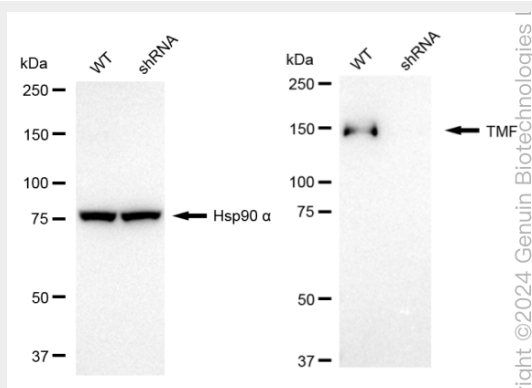
Provided below are standard protocols that you may find useful for product applications.

- [Western Blot](#)
- [Blocking Peptides](#)
- [Dot Blot](#)
- [Immunohistochemistry](#)
- [Immunofluorescence](#)
- [Immunoprecipitation](#)
- [Flow Cytometry](#)
- [Cell Culture](#)

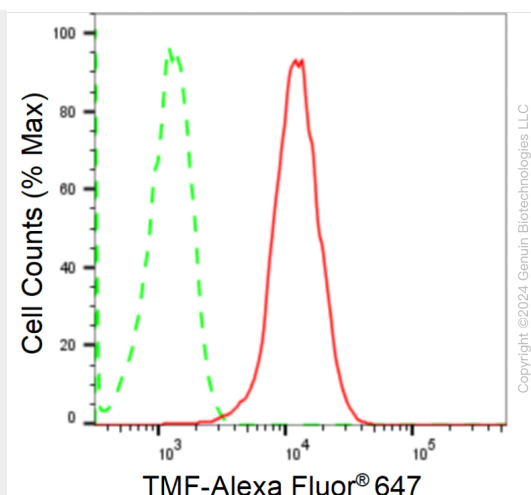
KD-Validated Anti-TATA Element Modulatory Factor 1 Rabbit Monoclonal Antibody - Images



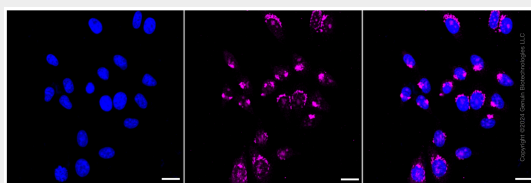
Western blotting analysis using anti-TMF antibody (Cat#AGI1762). Total cell lysates (30 µg) from various cell lines were loaded and separated by SDS-PAGE. The blot was incubated with anti-TMF antibody (Cat#AGI1762, 1:5,000) and HRP-conjugated goat anti-rabbit secondary antibody respectively.



Western blotting analysis using anti-TMF antibody (Cat#AGI1762). TMF expression in wild-type (WT) and TMF1 shRNA knockdown (KD) HeLa cells with 20 µg of total cell lysates. Hsp90 α serves as a loading control. The blot was incubated with anti-TMF antibody (Cat#AGI1762, 1:5,000) and HRP-conjugated goat anti-rabbit secondary antibody respectively.



Flow cytometric analysis of TMF expression in HepG2 cells using anti-TMF antibody (Cat#AGI1762, 1:2,000). Green, isotype control; red, TMF.



Immunocytochemical staining of HepG2 cells with anti-TMF antibody (Cat#AGI1762, 1:1,000). Nuclei were stained blue with DAPI; TMF was stained magenta with Alexa Fluor® 647. Images were taken using Leica stellaris 5. Protein abundance based on laser Intensity and smart gain: Medium. Scale bar: 20 µm.