

KD-Validated Anti-Exo/Endonuclease G Rabbit Monoclonal Antibody
Rabbit monoclonal antibody
Catalog # AGI1786**Specification****KD-Validated Anti-Exo/Endonuclease G Rabbit Monoclonal Antibody - Product Information**

Application	WB, ICC
Primary Accession	Q9Y2C4
Reactivity	Human
Clonality	Monoclonal
Isotype	Rabbit IgG
Calculated MW	Predicted, 41 kDa ; Observed, 41 kDa
Gene Name	EXOG
Aliases	Exo/Endonuclease G; ENGL; Endonuclease G-Like 1; ENDOGL1; ENDOGL2; ENGL-A; ENGL-B; Endo/Exonuclease (5'-3'), Endonuclease G-Like; Nuclease EXOG, Mitochondrial; Endonuclease G-Like 2; Endo G-Like 1; EC 3.1.30.-; EC 3.1.30; ENGLA; ENGLB
Immunogen	A synthesized peptide derived from human ENDOGL1 / ENGL

KD-Validated Anti-Exo/Endonuclease G Rabbit Monoclonal Antibody - Additional Information

Gene ID	9941
Other Names	
Nuclease EXOG, mitochondrial, 3.1.30.-, Endonuclease G-like 1, Endo G-like 1, EXOG, ENDOGL1, ENDOGL2, ENGL	

KD-Validated Anti-Exo/Endonuclease G Rabbit Monoclonal Antibody - Protein Information**Name** EXOG**Synonyms** ENDOGL1, ENDOGL2, ENGL**Function**

Endo/exonuclease with nicking activity towards supercoiled DNA, a preference for single-stranded DNA and 5'-3' exonuclease activity.

Cellular Location

Mitochondrion inner membrane

Tissue Location

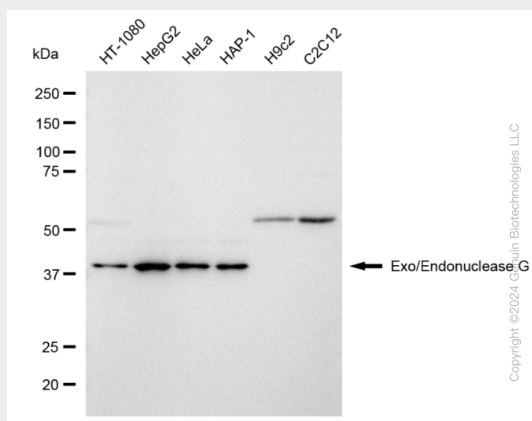
Ubiquitous.

KD-Validated Anti-Exo/Endonuclease G Rabbit Monoclonal Antibody - Protocols

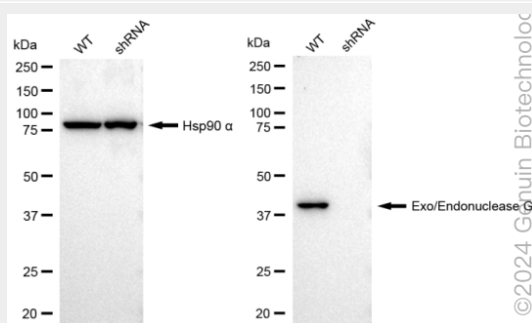
Provided below are standard protocols that you may find useful for product applications.

- [Western Blot](#)
- [Blocking Peptides](#)
- [Dot Blot](#)
- [Immunohistochemistry](#)
- [Immunofluorescence](#)
- [Immunoprecipitation](#)
- [Flow Cytometry](#)
- [Cell Culture](#)

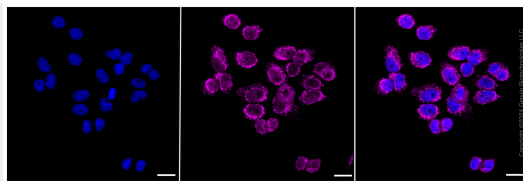
KD-Validated Anti-Exo/Endonuclease G Rabbit Monoclonal Antibody - Images



Western blotting analysis using anti-Exo/Endonuclease G antibody (Cat#AGI1786). Total cell lysates (30 µg) from various cell lines were loaded and separated by SDS-PAGE. The blot was incubated with anti-Exo/Endonuclease G antibody (Cat#AGI1786, 1:5,000) and HRP-conjugated goat anti-rabbit secondary antibody respectively.



Western blotting analysis using anti-Exo/endonuclease G antibody (Cat#AGI1786). Exo/Endonuclease G expression in wild type (WT) and exo/endonuclease G shRNA knockdown (KD) HeLa cells with 30 µg of total cell lysates. Hsp90 α serves as a loading control. The blot was incubated with anti-Exo/endonuclease G antibody (Cat#AGI1786, 1:5,000) and HRP-conjugated goat anti-rabbit secondary antibody respectively.



Immunocytochemical staining of HepG2 cells with Exo/Endonuclease G antibody (Cat#AGI1786, 1:1,000). Nuclei were stained blue with DAPI; Exo/Endonuclease G was stained magenta with Alexa Fluor® 647. Images were taken using Leica stellaris 5. Protein abundance based on laser Intensity and smart gain: High. Scale bar: 20 μ m.